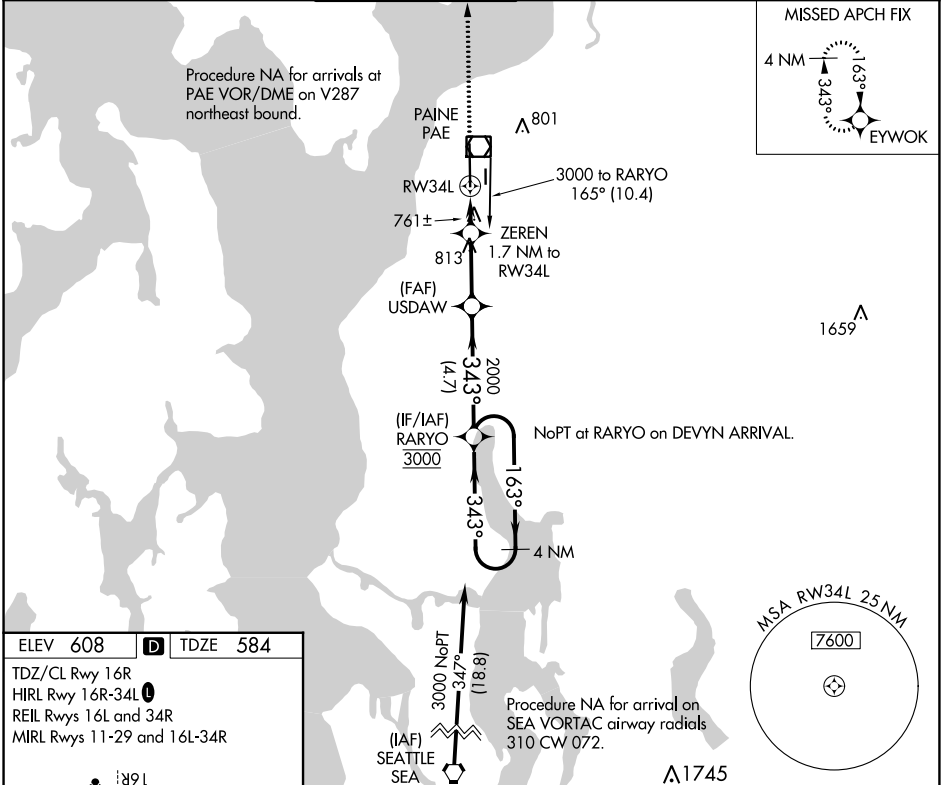


APP CRS	Rwy Idg	<b>9010</b>
<b>343°</b>	TDZE	<b>584</b>
	Apt Elev	<b>608</b>

# RNAV (GPS) RWY 34L

SEATTLE PAINE FLD INTL (P.A.E.)

<p><b>▼</b> Circling Rwy 34R NA at night. Rwy 34L helicopter visibility reduction below 3/4 SM NA. DME/DME RNP-0.3 NA.</p>		<p>MALSF</p>	<p>MISSED APPROACH: Climb to 3000 direct EYWOK and hold.</p>		
ATIS	SEATTLE APP CON	<b>PAINE TOWER *</b>	GND CON	CLNC DEL	UNICOM
<b>128.65</b>	<b>128.5 306.9</b>	<b>132.95 (CTAF) 0 256.7</b>	<b>121.8 339.8</b>	<b>127.175</b>	<b>122.95</b>



ELEV 608 **D** TDZE 584

TDZ/CL Rwy 16R  
HIRL Rwy 16R-34L  
REIL Rws 16L and 34R  
MIRL Rws 11-29 and 16L-34R

191  
TWR 787  
34L  
34R

3000 EYWOK VGSI and descent angles not coincident (VGSI Angle 3.00/TCH 75).

RARYO 4 NM Holding Pattern

ZEREN 1.7 NM to RW34L

USDAW

RW34L 1.2 NM to RW34L

1160 2000 3000

163° 343°

1.2 NM 0.5 NM 2.6 NM 4.7 NM

CATEGORY	A	B	C	D
LNAV MDA	1020-3/4 436 (500-3/4)		1020-1 436 (500-1)	
<b>C</b> CIRCLING	1100-1 492 (500-1)		1120-1 1/2 512 (600-1 1/2)	1160-2 552 (600-2)

NW-1, 05 SEP 2024 to 03 OCT 2024

NW-1, 05 SEP 2024 to 03 OCT 2024