

FORT MOORE, GEORGIA

# ILS or LOC RWY 33

LOC I-LSF <b>110.7</b>	APCH CRS <b>327°</b>	Rwy ldg TDZE Arpt Elev <b>9302</b> <b>226</b> <b>227</b>
---------------------------	-------------------------	---

[USA]

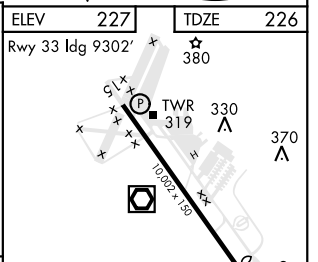
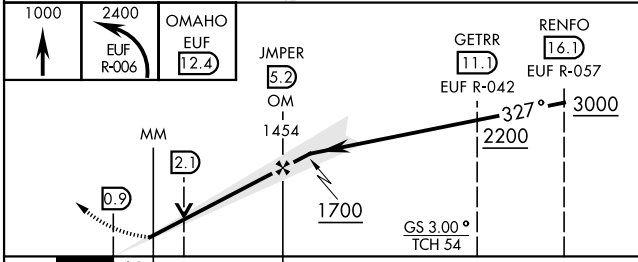
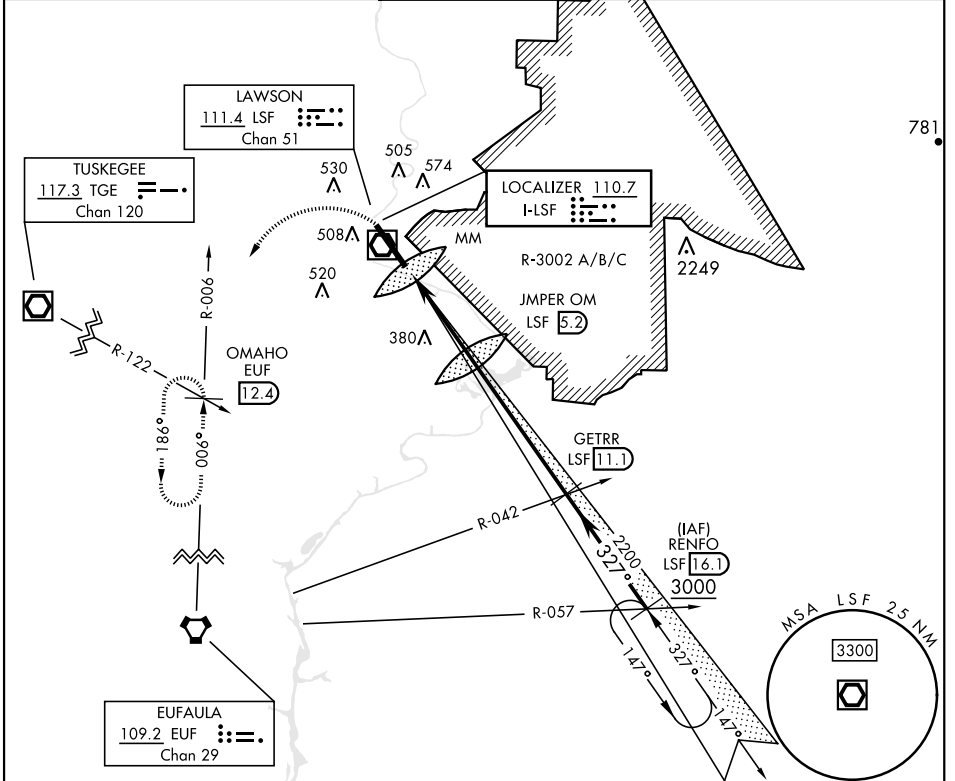
LAWSON AAF (KLSF)

▼ \* Circling not authorized E of Rwy 15-33.  
 NA when tower closed.



MISSED APPROACH: Climb to 1000 then climbing left turn to 2400 via EUF R-006 to OMAHO INT/EUF 12.4 DME and hold.

ATIS ★ <b>134.375</b>	ATLANTA APP CON <b>125.5 323.1</b>	TOWER <b>119.05</b> (CTAF) <b>269.525</b>	GND CON <b>121.7 254.25</b>	CLNC DEL <b>121.7 251.15</b>
--------------------------	---------------------------------------	--	--------------------------------	---------------------------------



ELEV	227				TDZE	226			
Rwy 33 ldg	9302'				★	380			
CATEGORY	A		B		C		D		HIRL Rwy 15-33
S-ILS 33	426/24	200	(200-½)	426/40	200	(200-¾)			
S-LOC 33	640/40	414	(500-¾)	640/50	414	(500-1)			
CIRCLING*	820-1	593	(600-1)	840-1 ¾	613	(700-1 ¾)	880-2	653	(700-2)
FAF to MAP 4.4 NM									
Knots	60	90	120	150	180				
Min:Sec	4:24	2:56	2:12	1:46	1:28				

FORT MOORE, GEORGIA

32° 20' N-85° 00' W

LAWSON AAF (KLSF)

Orig B 22FEB24

# ILS or LOC RWY 33

SE-4, 05 SEP 2024 to 03 OCT 2024

SE-4, 05 SEP 2024 to 03 OCT 2024