

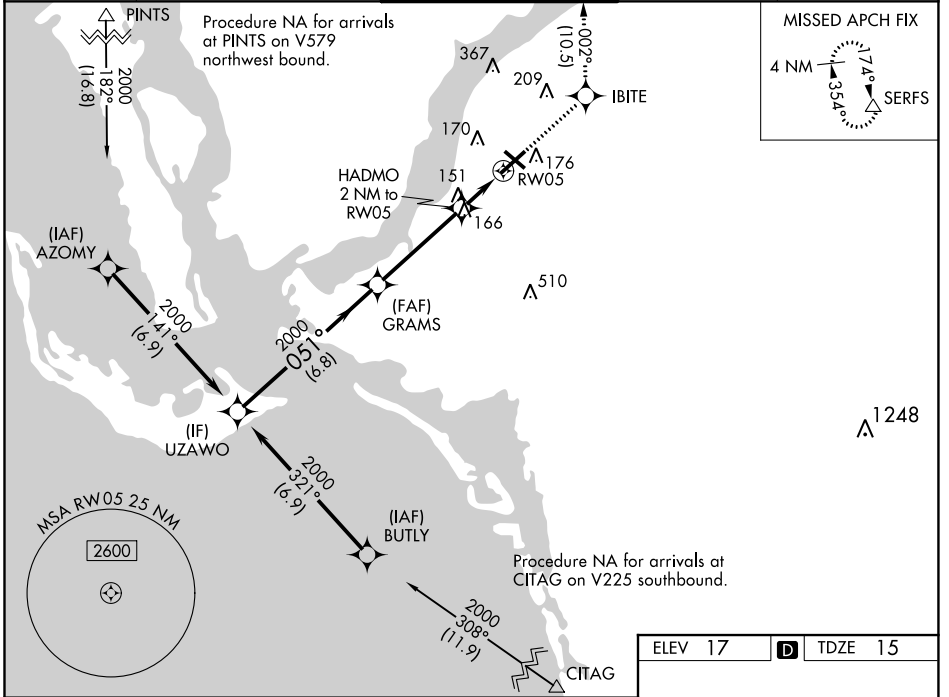
WAAS CH <b>72624</b> <b>W05A</b>	APP CRS <b>051°</b>	Rwy Idg <b>5548</b> TDZE <b>15</b> Apt Elev <b>17</b>
--	------------------------	---

# RNAV (GPS) RWY 5

PAGE FLD (FMY)

RNP APCH.	<p>When Circling to Rwy 31 at night, operational VGSI required, remain on or above VGSI glidepath until threshold. Rwy 5 helicopter visibility reduction below <math>\frac{3}{4}</math> SM NA. For uncompensated Baro-VNAV systems, LNAV/VNAV NA below 4°C or above 54°C.</p>	<p>MISSED APPROACH: Climb to 2600 direct IBITE and on track 002° to SERFS and hold.</p>
-----------	---	---

ATIS <b>123.725</b>	FORT MYERS APP CON ★ <b>125.15 306.2</b> (Rwys 5, 13) <b>126.8 306.2</b> (Rwys 23, 31)	PAGE TOWER ★ <b>119.0</b> (CTAF) <b>306.95</b>	GND CON <b>121.7</b>	CLNC DEL <b>121.7</b>
------------------------	--	---	-------------------------	--------------------------



SE-3, 05 SEP 2024 to 03 OCT 2024

SE-3, 05 SEP 2024 to 03 OCT 2024

	2600	IBITE	tr 002°	SERFS
UZAWO	GRAMS	HADMO 2 NM to RW05	*LNAV only.	
2000	2000	*1.1 NM to RW05	RW05	
GP 3.00° TCH 53	051°	*700		
	6.8 NM	4.1 NM	0.9 NM	1.1 NM
CATEGORY	A	B	C	D
LPV DA		265- $\frac{3}{4}$	250 (300- $\frac{3}{4}$ )	
LNAV/VNAV DA		317- $\frac{7}{8}$	302 (300- $\frac{7}{8}$ )	
LNAV MDA	420-1	405 (500-1)	420-1 $\frac{1}{8}$	405 (500-1 $\frac{1}{8}$ )
<b>C</b> CIRCLING	540-1	523 (600-1)	600-1 $\frac{1}{2}$ 583 (600-1 $\frac{1}{2}$ )	680-2 663 (700-2)

