

KUSSO ONE DEPARTURE (RNAV)

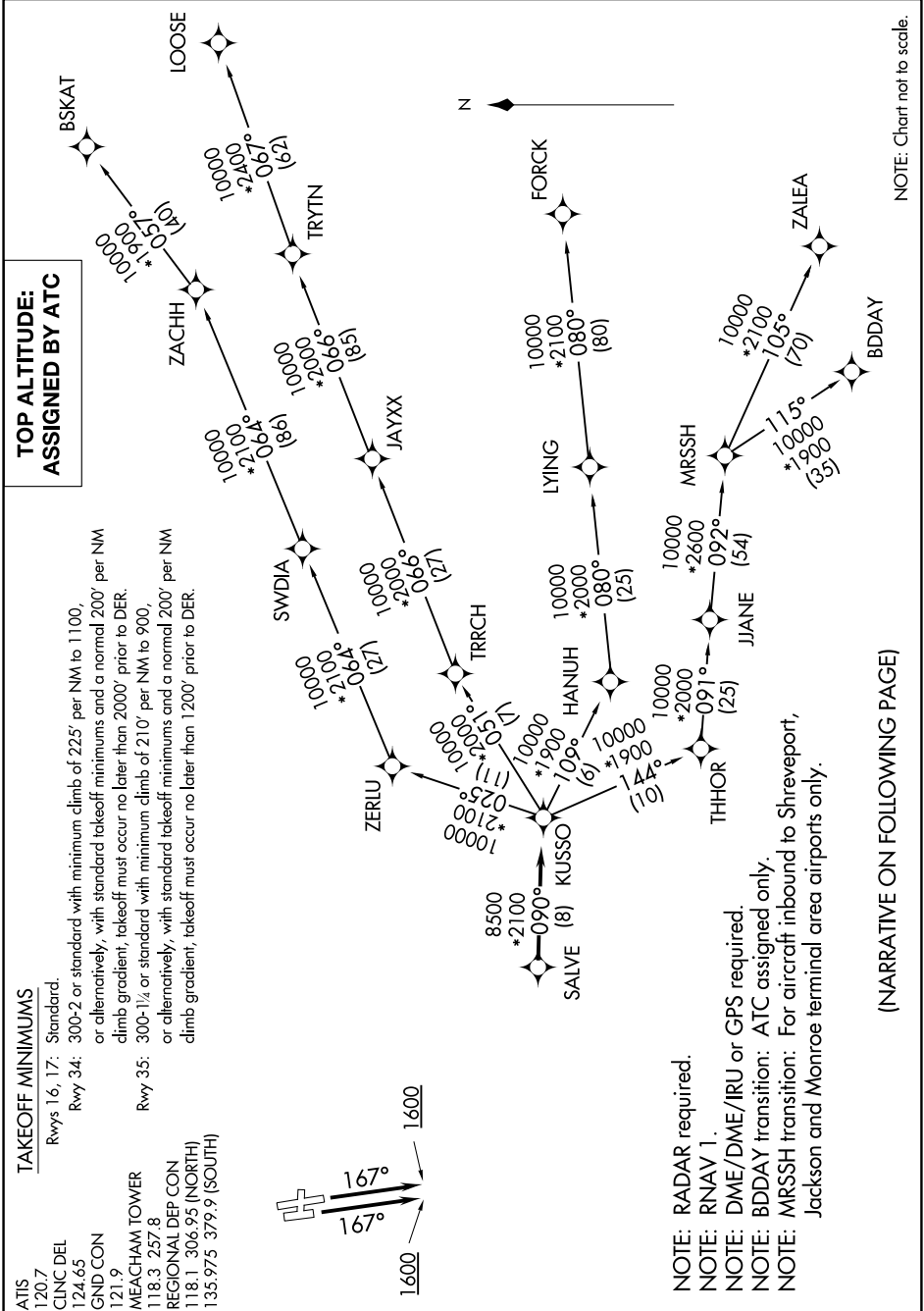
SC-2, 05 SEP 2024 to 03 OCT 2024

TAKEOFF MINIMUMS

ATIS 120.7
 CLNC DEL 124.65
 GND CON 121.9
 MEACHAM TOWER 118.3 257.8
 REGIONAL DEP CON 118.1 306.95 (NORTH)
 135.975 379.9 (SOUTH)

Rwys 16, 17: Standard.
 Rwy 34: 300-2 or standard with minimum climb of 225' per NM to 1100, or alternatively, with standard takeoff minimums and a normal 200' per NM climb gradient, takeoff must occur no later than 2000' prior to DER.
 Rwy 35: 300-1/4 or standard with minimum climb of 210' per NM to 900, or alternatively, with standard takeoff minimums and a normal 200' per NM climb gradient, takeoff must occur no later than 1200' prior to DER.

TOP ALTITUDE: ASSIGNED BY ATC



NOTE: RADAR required.
 NOTE: RNAV 1.
 NOTE: DME/DME/IRU or GPS required.
 NOTE: BDDAY transition: ATC assigned only.
 NOTE: MRSSH transition: For aircraft inbound to Shreveport, Jackson and Monroe terminal area airports only.

(NARRATIVE ON FOLLOWING PAGE)

NOTE: Chart not to scale.

SC-2, 05 SEP 2024 to 03 OCT 2024