

BORRN SIX DEPARTURE (RNAV)

SC-5, 05 SEP 2024 to 03 OCT 2024

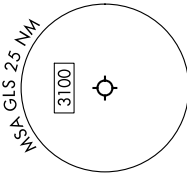
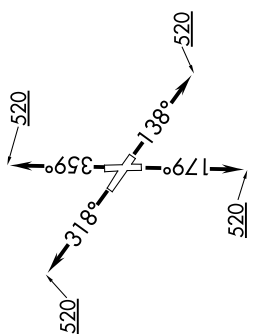
**TOP ALTITUDE:  
ASSIGNED BY ATC**

RNAV 1 - DME/DME/IRU or GPS.  
RADAR required.

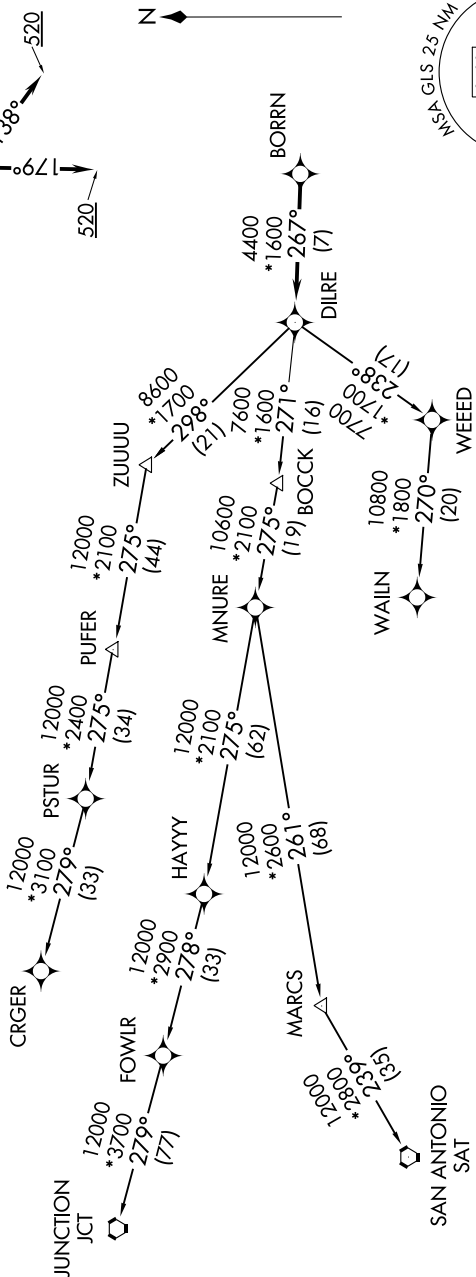
**TAKEOFF MINIMUMS**

Rwys 14, 18, 32, 36:  
Standard with minimum  
climb of 500'/NM to 520.

- ASOS 123.95
- CINC DEL (When twr closed) 135.35
- GND CON 118.625
- GALVESTON TOWER\* 120.575 (CTAF)
- HOUSTON DEP CON 134.45 284.0



NOTE: Chart not to scale.



NOTE: CRGR-TRANSITION ATC assigned only for aircraft departing 54T, AXH, EFD, GLS, HPY, IWS, LBX, LVJ, SGR, TME, T00, T41.

(NARRATIVE ON FOLLOWING PAGE)

BORRN SIX DEPARTURE (RNAV)

SC-5, 05 SEP 2024 to 03 OCT 2024