

LOC I-GLS <b>111.7</b>	APP CRS <b>138°</b>	Rwy ldg TDZE Apt Elev	<b>6000</b> <b>5</b> <b>6</b>
---------------------------	------------------------	-----------------------------	-------------------------------------

# ILS or LOC RWY 14

SCHOLES INTL AT GALVESTON (GLS)

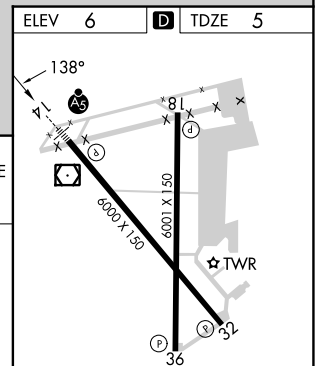
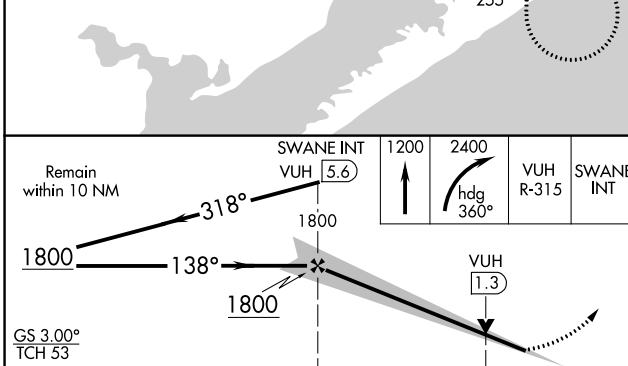
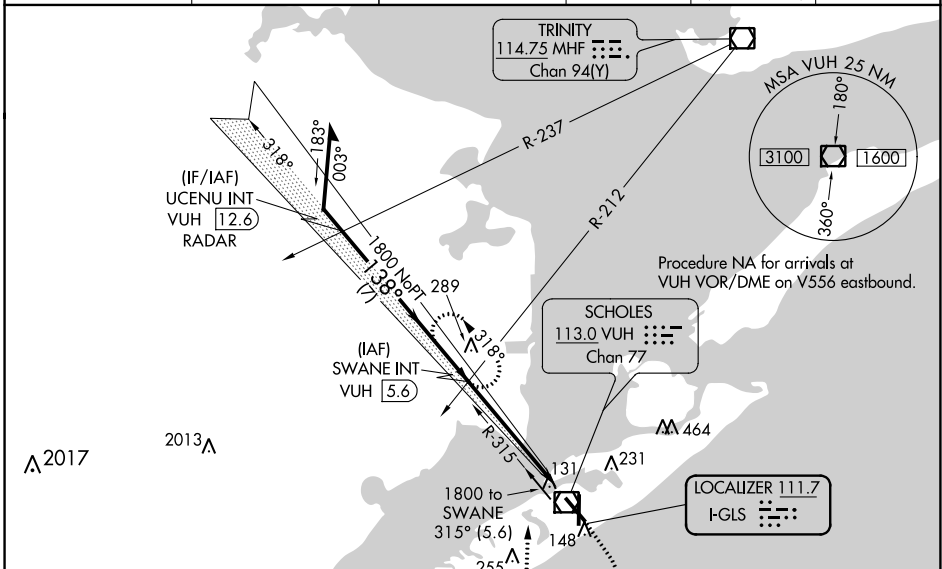
**▲ NA** RADAR required for procedure entry at UCENU.

**▲ NA** Circling NA east of Rwy 18 and northeast of Rwy 32. For inop ALS, increase S-LOC 14 Cat A and B visibility to 1 SM. DME from VUH VOR/DME. Simultaneous reception of I-GLS and VUH DME required. Inop table does not apply to S-ILS 14 all Cats.

**MALSR**

**MISSED APPROACH:** Climb to 1200 then climbing right turn to 2400 on heading 360° and VUH VOR/DME R-315 to SWANE INT/VUH 5.6 DME and hold, continue climb-in-hold to 2400.

ASOS <b>123.95</b>	HOUSTON APP CON <b>134.45 284.0</b>	GALVESTON TOWER * <b>120.575</b> (CTAF) <b>0</b>	GND CON <b>118.625</b>	CLNC DEL <b>135.35</b> (When twr dosed)	UNICOM <b>123.05</b>
-----------------------	--	---	---------------------------	---	-------------------------



CATEGORY	A	B	C	D
S-ILS 14	205-3/4 200 (200-3/4)			
S-LOC 14	460-3/4	455 (500-3/4)	460-7/8	455 (500-7/8)
CIRCLING	500-1 494 (500-1)	520-1 514 (600-1)	620-13/4 614 (700-13/4)	620-2 614 (700-2)

REIL Rwy 18, 32, and 36					
MIRL Rwy 18-36					
HIRL Rwy 14-32					
FAF to MAP 5.5 NM					
Knots	60	90	120	150	180
Min:Sec	5:30	3:40	2:45	2:12	1:50

SC-5, 05 SEP 2024 to 03 OCT 2024

SC-5, 05 SEP 2024 to 03 OCT 2024