

(INDIE8.INDIE) 22307

AL-164 (FAA)

SCHOLES INTL AT GALVESTON (GLS)

INDIE EIGHT DEPARTURE (RNAV)

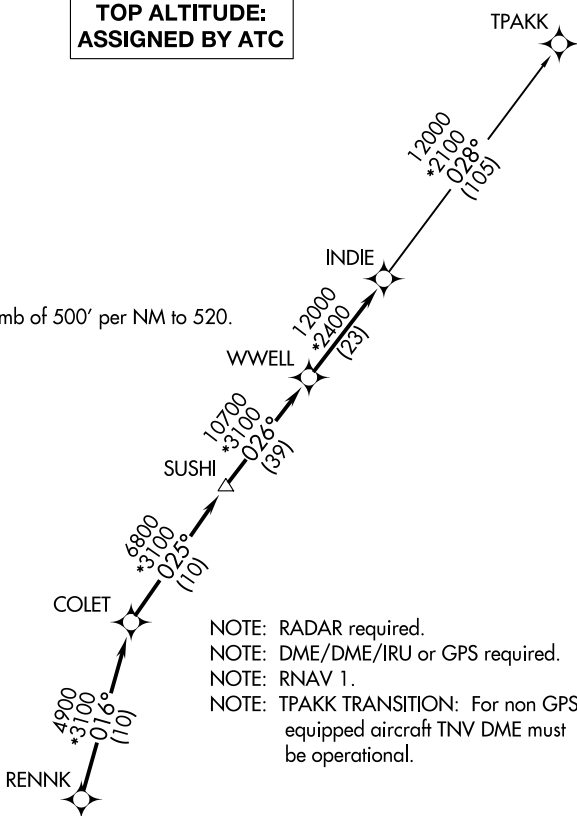
GALVESTON, TEXAS

ASOS
 123.95
 CLNC DEL
 135.35 (when twr closed)
 GND CON
 118.625
 GALVESTON TOWER ★
 120.575 (CTAF)
 HOUSTON DEP CON
 134.45 284.0

**TOP ALTITUDE:
 ASSIGNED BY ATC**

TAKEOFF MINIMUMS

Rwys 14, 18, 32, 36:
 Standard with minimum climb of 500' per NM to 520.



- NOTE: RADAR required.
- NOTE: DME/DME/IRU or GPS required.
- NOTE: RNAV 1.
- NOTE: TPAKK TRANSITION: For non GPS equipped aircraft TNV DME must be operational.

DEPARTURE ROUTE DESCRIPTION

TAKEOFF RUNWAY 14: Climb on heading 138° to 520 for RADAR vectors to RENNK, thence . . .

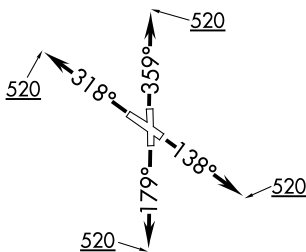
TAKEOFF RUNWAY 18: Climb on heading 179° to 520 for RADAR vectors to RENNK, thence . . .

TAKEOFF RUNWAY 32: Climb on heading 318° to 520 for RADAR vectors to RENNK, thence . . .

TAKEOFF RUNWAY 36: Climb on heading 359° to 520 for RADAR vectors to RENNK, thence . . .

. . . on track 016° to COLET, then on track 025° to SUSHI, then on track 026° to WWELL, then on track 026° to INDIE, then on (transition). Maintain ATC assigned altitude. Expect filed altitude 10 minutes after departure.

TPAKK TRANSITION (INDIE8.TPAKK)



NOTE: Chart not to scale.

SC-5, 05 SEP 2024 to 03 OCT 2024

SC-5, 05 SEP 2024 to 03 OCT 2024

INDIE EIGHT DEPARTURE (RNAV)

(INDIE8.INDIE) 07OCT21

GALVESTON, TEXAS
SCHOLES INTL AT GALVESTON (GLS)