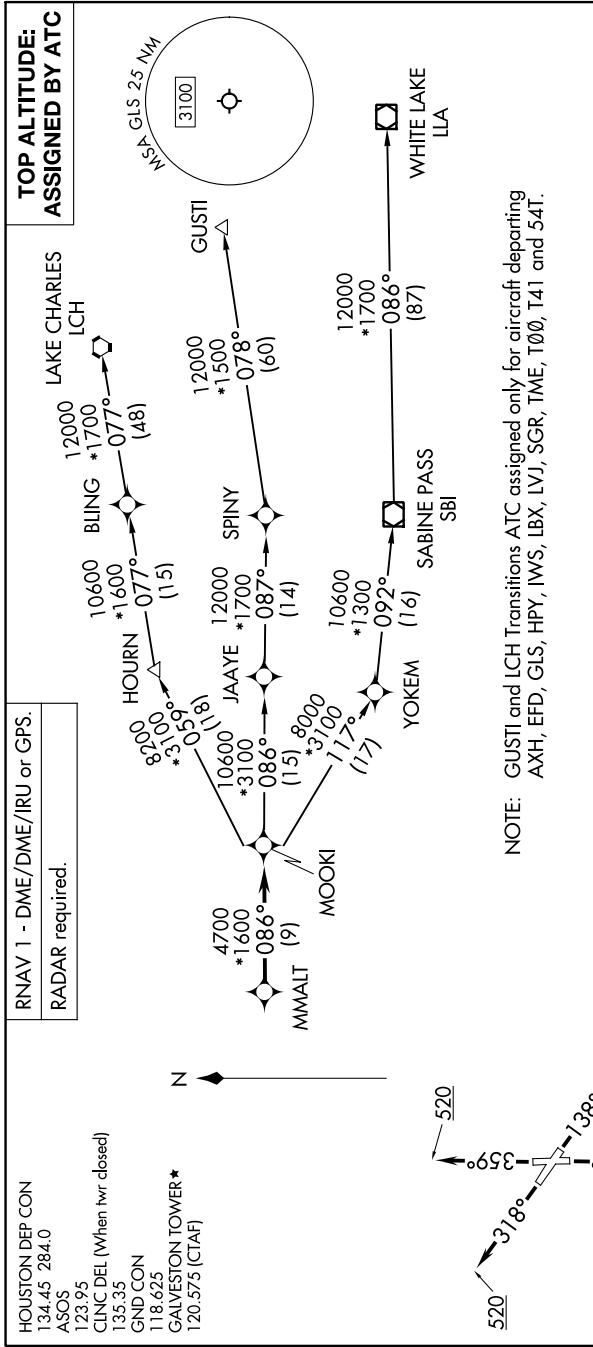


MMALT SEVEN DEPARTURE (RNAV)

SC-5, 05 SEP 2024 to 03 OCT 2024



NOTE: GUSTI and LCH Transitions ATC assigned only for aircraft departing AXH, EFD, GLS, HPY, IWS, LBX, LVJ, SGR, TME, T00, T41 and 54T.

DEPARTURE ROUTE DESCRIPTION

- TAKEOFF RUNWAY 14: Climb on heading 138° to 520, for RADAR vectors to MMALT, thence. . . .
 - TAKEOFF RUNWAY 18: Climb on heading 179° to 520, for RADAR vectors to MMALT, thence. . . .
 - TAKEOFF RUNWAY 32: Climb on heading 318° to 520, for RADAR vectors to MMALT, thence. . . .
 - TAKEOFF RUNWAY 36: Climb on heading 359° to 520, for RADAR vectors to MMALT, thence. . . .
- . . . on track 086° to MOOKI, then on (transition). Maintain ATC assigned altitude.
Expect filed altitude 10 minutes after departure.

- GUSTI TRANSITION (MMALT7.GUSTI)
- LAKE CHARLES TRANSITION (MMALT7.LCH)
- WHITE LAKE TRANSITION (MMALT7.LLA)

NOTE: Chart not to scale.

SC-5, 05 SEP 2024 to 03 OCT 2024