

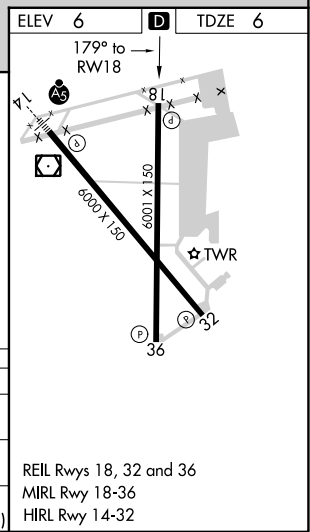
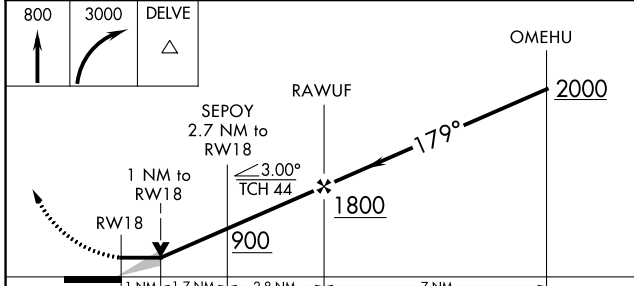
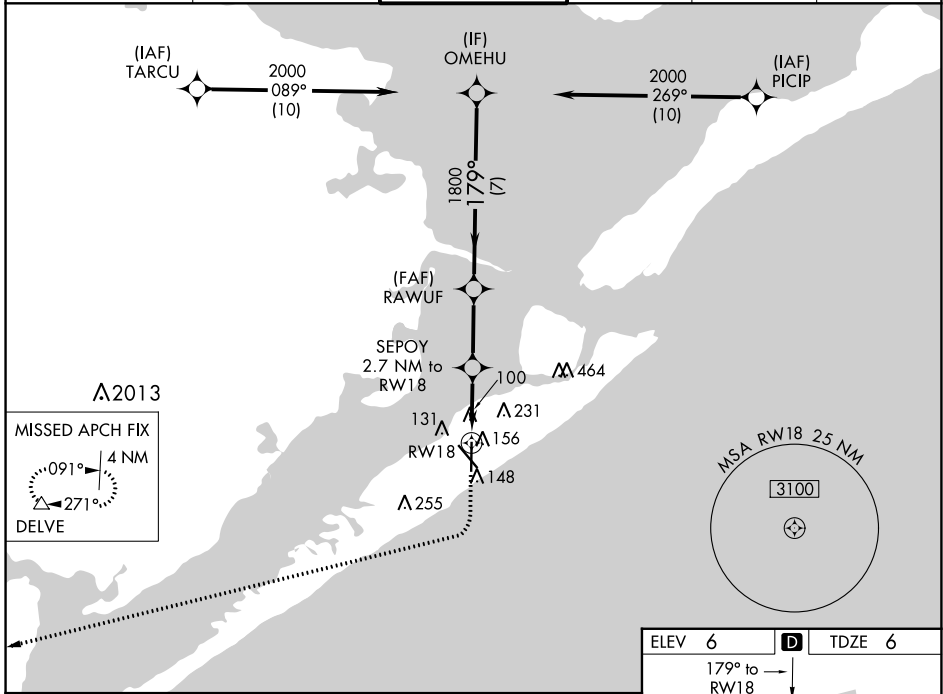
WAAS CH <b>82301</b> <b>W18A</b>	APP CRS <b>179°</b>	Rwy Idg TDZE Apt Elev	<b>6001</b> <b>6</b> <b>6</b>
--	------------------------	-----------------------------	-------------------------------------

# RNAV (GPS) RWY 18

SCHOLES INTL AT GALVESTON (GLS)

RNP APCH.		MISSED APPROACH: Climb to 800 then climbing right turn to 3000 direct DELVE and hold.		
		Circling NA east of Rwy 18 and northeast of Rwy 32.		

ASOS <b>123.95</b>	HOUSTON APP CON <b>134.45 284.0</b>	<b>GALVESTON TOWER ★</b> <b>120.575 (CTAF)</b>	GND CON <b>118.625</b>	CLNC DEL <b>135.35</b> <small>(When twr closed)</small>	UNICOM <b>123.05</b>
-----------------------	--	---	---------------------------	---	-------------------------



ELEV 6	<b>D</b>	TDZE 6			
800	3000	DELVE			
CATEGORY	A	B	C	D	E
LP MDA	360-1		354 (400-1)		
LNAV MDA	420-1	414 (500-1)	420-1 1/8	414 (500-1 1/8)	
CIRCLING	500-1 494 (500-1)	520-1 514 (600-1)	620-1 3/4 614 (700-1 3/4)	620-2 614 (700-2)	620-2 1/4 614 (700-2 1/4)

REIL Rwy 18, 32 and 36  
MIRL Rwy 18-36  
HIRL Rwy 14-32

SC-5, 05 SEP 2024 to 03 OCT 2024

SC-5, 05 SEP 2024 to 03 OCT 2024