


LOC I-BQK <b>108.5</b>	APP CRS <b>069°</b>	Rwy Idg <b>8001</b>
		TDZE <b>26</b>
		Apt Elev <b>26</b>

# ILS or LOC RWY 7

BRUNSWICK GOLDEN ISLES (BQK)

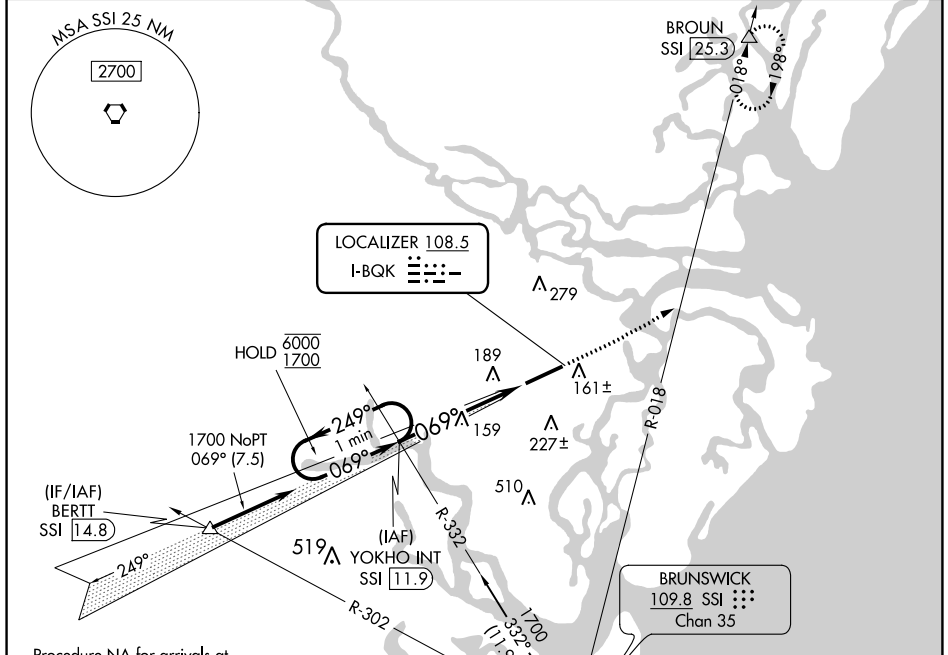
DME required.

**▽**  
**▲** For inop ALS, increase S-LOC 7 Cat C/D visibility to 1½ SM.

MALSR 

MISSED APPROACH: Climb to 3000 on heading 069° and on SSI VORTAC R-018 to BROUN/SSI 25.3 DME and hold.

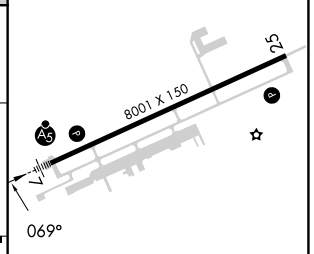
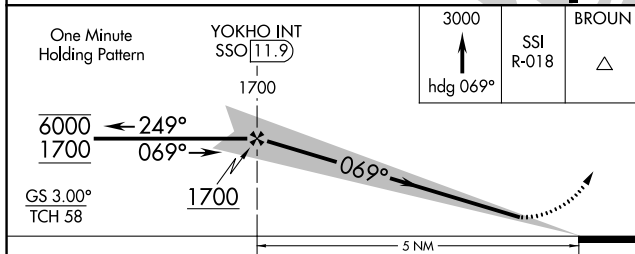
AWOS-3 <b>124.175</b>	JACKSONVILLE CENTER <b>126.75 277.4</b>	CLNC DEL <b>126.75 277.4</b>	UNICOM <b>123.0 (CTAF) 0</b>
--------------------------	--	---------------------------------	---------------------------------



SE-4, 05 SEP 2024 to 03 OCT 2024

SE-4, 05 SEP 2024 to 03 OCT 2024

ELEV 26	TDZE 26
---------	---------



CATEGORY	A	B	C	D
S-ILS 7		226-½	200 (200-½)	
S-LOC 7	420-½	394 (400-½)	420-⅝	394 (400-⅝)
CIRCLING	540-1	514 (600-1)	560-1½ 534 (600-1½)	800-2½ 774 (800-2½)

REIL Rwy 25 <b>0</b>	
HIRL Rwy 7-25 <b>0</b>	
FAF to MAP 5 NM	
Knots	60 90 120 150 180
Min:Sec	5:00 3:20 2:30 2:00 1:40