

JACKSONVILLE, FLORIDA

RNAV (GPS) Z RWY 10

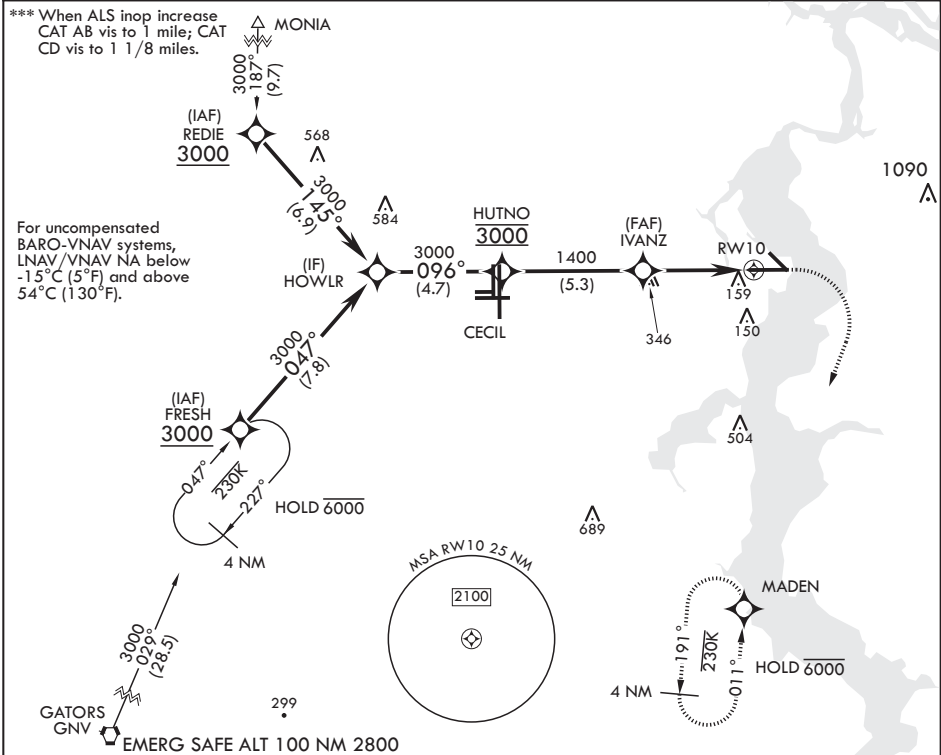
WAAS CH 42020 W10A	APCH CRS 096°	Rwy ldg TDZE Arprt Elev	8006 21 23
---------------------------------	-------------------------	-------------------------------	---------------------------------------

- (USN)

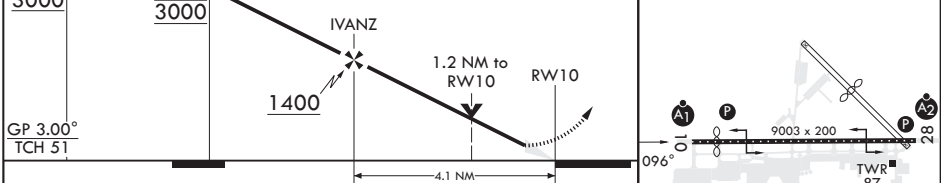
JACKSONVILLE NAS (TOWERS FLD) (KNIP)

RNP APCH	ALSIF-1	MISSED APPROACH: Climb to 600 then climbing right turn to 2000 direct MADEN and hold.
<p>▼ * When ALS inop increase CAT ABCD vis to 3/4 mile. ** When ALS inop, increase CAT ABCD vis to 1 mile.</p>		

ATIS 124.35 290.425	APP CON/DEP CON 127.775 377.075	TOWER 125.15 (CTAF) 340.2	GND CON 128.6 336.4	CLNC DEL 134.775 353.675	ASR/PAR
-------------------------------	---	-------------------------------------	-------------------------------	------------------------------------	---------



HOWLR	HUTNO	IVANZ	ELEV 23	TDZE 21
3000	3000	1400	Rwy 10 ldg 8006' Rwy 14 ldg 3244'	
GP 3.00° TCH 51	096°	1.2 NM to RW10		



CATEGORY	A	B	C	D
LPV DA*	221-1/2	200	(200-1/2)	
LNAV/VNAV DA**	387-5/8	366	(400-5/8)	
LNAV MDA***	440-1/2	419 (500-1/2)	440-3/4	419 (500-3/4)
CIRCLING	500-1	477 (500-1)	560-1 1/2 537 (600-1 1/2)	780-2 1/2 757 (800-2 1/2)

HIRL Rwy 10-280

JACKSONVILLE, FLORIDA

30°14'N - 81°41'W

JACKSONVILLE NAS (TOWERS FLD) (KNIP)

Amdt 1 03NOV22

RNAV (GPS) Z RWY 10

SE-3, 05 SEP 2024 to 03 OCT 2024

SE-3, 05 SEP 2024 to 03 OCT 2024