

JACKSONVILLE, FLORIDA

# RNAV (GPS) Z RWY 28

WAAS CH <b>46924</b> W28A	APCH CRS <b>276°</b>	Rwy ldg TDZE Arpt Elev	<b>9003</b> <b>13</b> <b>23</b>
---------------------------------	-------------------------	------------------------------	---------------------------------------

-(USN)

JACKSONVILLE NAS (TOWERS FLD) (KNIP)

RNP APCH

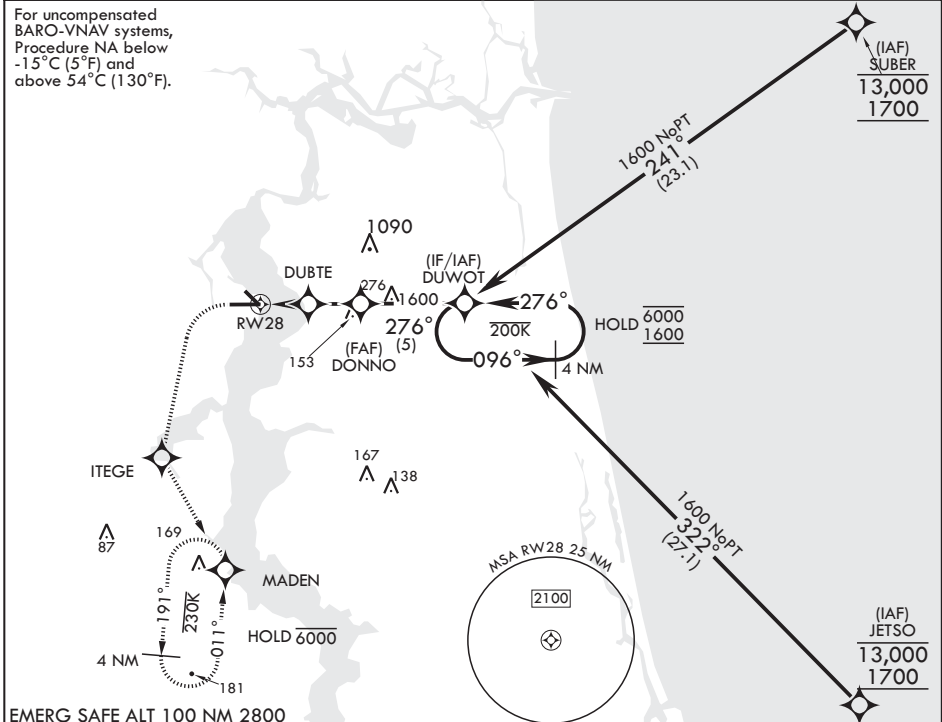
▼ \* When ALS inop, increase CAT BCD to 7/8 mile.  
 \*\* When ALS inop, increase CAT AB vis to 1 mile, CAT CD vis to 1 1/8 miles.



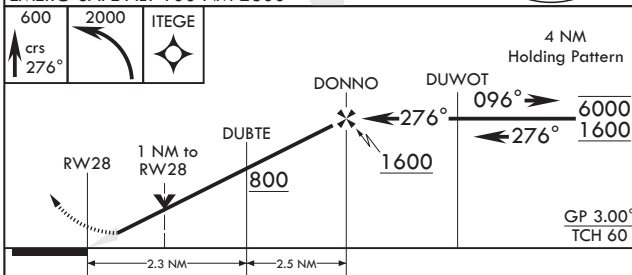
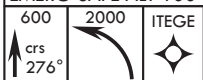
MISSED APPROACH: Climb to 600 then climbing left turn to 2000 direct ITEGE, track 156° to MADEN and hold.

ATIS <b>124.35 290.425</b>	APP CON/DEP CON <b>127.775 377.075</b>	TOWER <b>125.15 (CTAF) 340.2</b>	GND CON <b>128.6 336.4</b>	CLNC DEL <b>134.775 0 353.675</b>	ASR/PAR
-------------------------------	---	-------------------------------------	-------------------------------	--------------------------------------	---------

For uncompensated BARO-VNAV systems, Procedure NA below -15°C (5°F) and above 54°C (130°F).



EMERG SAFE ALT 100 NM 2800

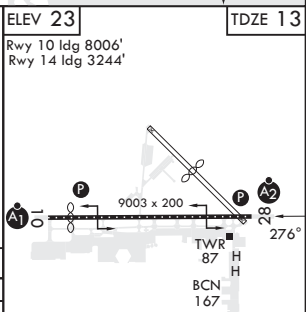


ELEV 23

Rwy 10 ldg 8006'  
Rwy 14 ldg 3244'

TDZE 13

CATEGORY	A		B		C		D	
LPV DA	213-¾		200		(200-¾)			
LNAV/VNAV DA*	263-¾	274-¾	282-¾	293-¾	250 (300-¾)	261 (300-¾)	269 (300-¾)	280 (300-¾)
LNAV MDA**	400-¾	387 (400-¾)	400-⅞	387 (400-¾)				
Ⓢ CIRCLING	500-1	477 (500-1)	560-1½	780-2½	537 (600-1½)		757 (800-2½)	



JACKSONVILLE, FLORIDA

30°14'N - 81°41'W

JACKSONVILLE NAS (TOWERS FLD) (KNIP)

Amdt 1 03NOV22

# RNAV (GPS) Z RWY 28

SE-3, 05 SEP 2024 to 03 OCT 2024

SE-3, 05 SEP 2024 to 03 OCT 2024