

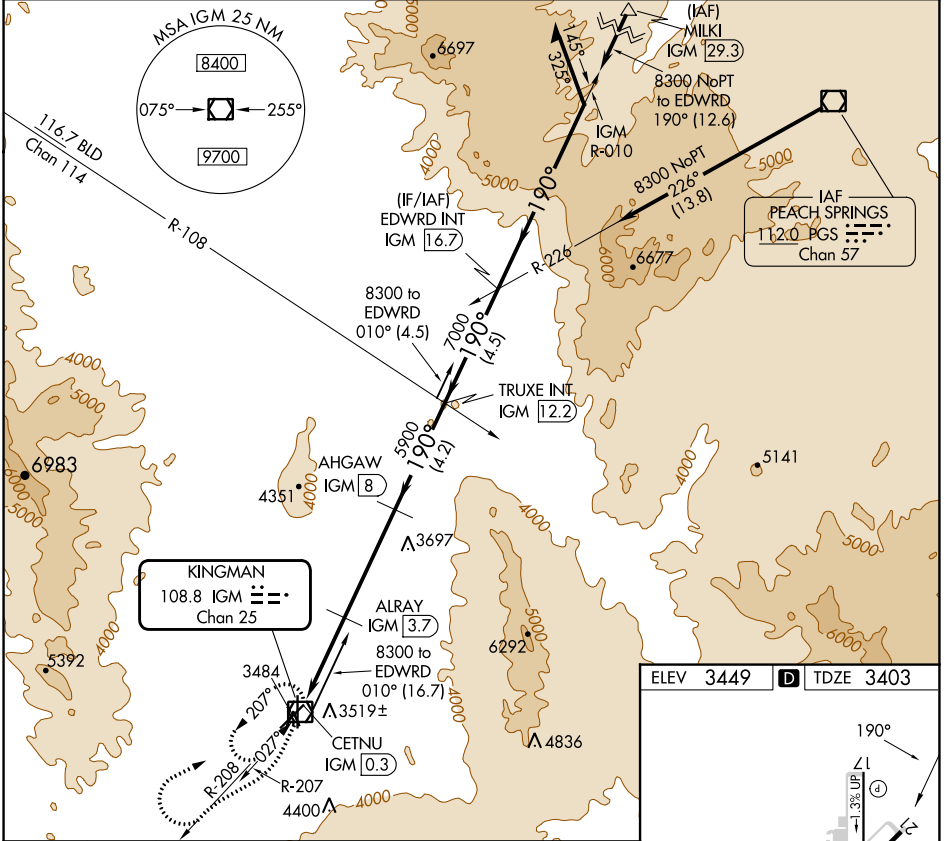
VOR/DME IGM 108.8 Chan 25	APP CRS 190°	Rwy Idg TDZE Apt Elev 6827 3403 3449
--	------------------------	--

VOR/DME RWY 21

KINGMAN (IGM)

⚠ Circling Rwy 35 NA at night. **⚠** MISSED APPROACH: Climbing right turn to 6000 via IGM VOR/DME R-208 then climbing right turn to 9000 direct IGM VOR/DME and hold.

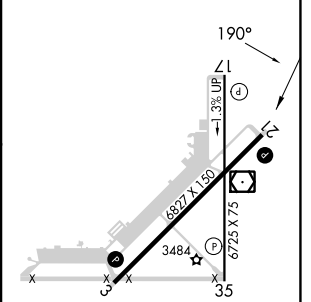
ASOS 119.275	LOS ANGELES CENTER 124.85 319.2	UNICOM 122.8 (CTAF) 📻
------------------------	---	--



SW-4, 05 SEP 2024 to 03 OCT 2024

SW-4, 05 SEP 2024 to 03 OCT 2024

ELEV 3449	D TDZE 3403
-----------	--------------------



6000 IGM R-208	9000 IGM	IGM	TRUXE INT IGM 12.2	EDWRD INT IGM 16.7	Remain within 10 NM
ALRAY IGM 3.7	AHGAW IGM 8	CETNU IGM 0.3	3484	3519±	3697
4540	5900	7000	8300	8300	8300
3.4 NM	4.3 NM	4.2 NM	4.5 NM		

CATEGORY	A	B	C	D
S-21	3880-1	477 (500-1)	3880-1¼ 477 (500-1¼)	3880-1½ 477 (500-1½)
CIRCLING	3980-1 531 (600-1)	4100-1 651 (700-1)	4420-3 971 (1000-3)	5340-3 1891 (2000-3)

MIRL Rwy 3-21 and 17-35 **📻**
REIL Rwy 3 and 21 **📻**