

LOC I-BUI <b>111.7</b>	APP CRS <b>231°</b>	Rwy Idg TDZE Apt Elev	<b>9495</b> <b>984</b> <b>986</b>
---------------------------	------------------------	-----------------------------	---

# ILS or LOC RWY 23R

MC GHEE TYSON (T'YS)

DME or RADAR required.

**⚠** For inop ALS, increase S-ILS 23R Cat E visibility to RVR 4000; increase S-LOC 23R Cat C/D/E visibility to 1/8 SM.

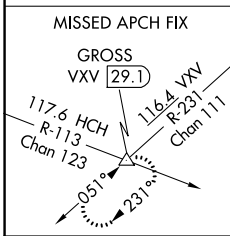
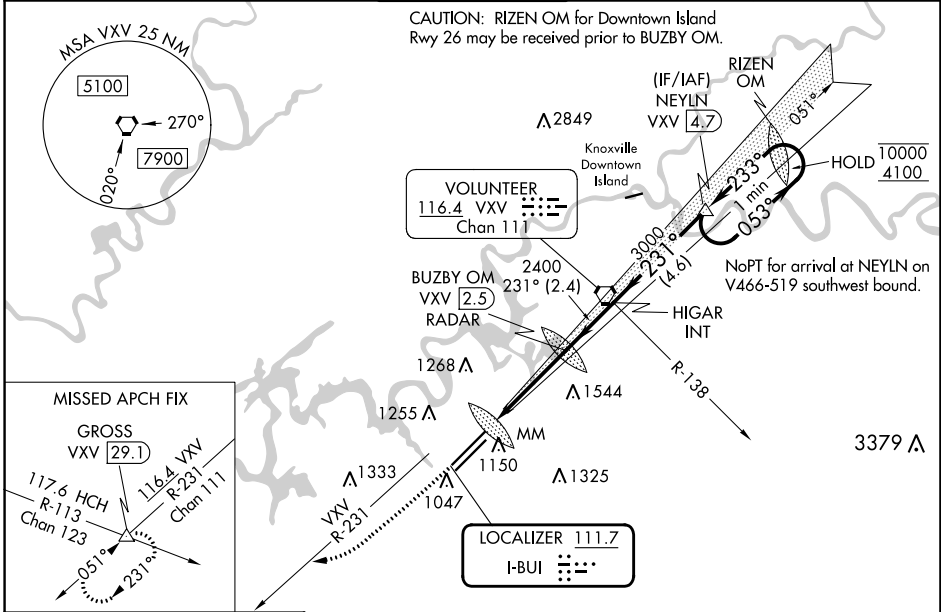
ALSIF-2



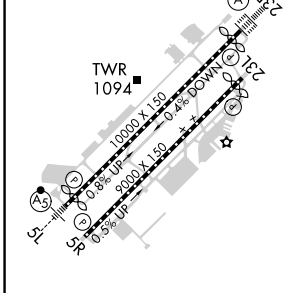
MISSED APPROACH: Climb to 2000 then climbing right turn to 4000 on heading 240° and VXV VORTAC R-231 to GROSS INT/VXV 29.1 DME and hold.

ATIS <b>128.35</b>	KNOXVILLE APP CON <b>123.9 360.8</b>	KNOXVILLE TOWER <b>121.2 257.8</b>	GND CON <b>121.9 348.6</b>	CLNC DEL <b>121.65</b>
-----------------------	---	---------------------------------------	-------------------------------	---------------------------

CAUTION: RIZEN OM for Downtown Island Rwy 26 may be received prior to BUZBY OM.



ELEV 986	<b>D</b>	TDZE 984
----------	----------	----------



HIRL Rws 5L-23R and 5R-23L  
REIL Rws 5R and 23L  
TDZ/CL Rws 5R and 23R

FAF to MAP 4.2 NM

Knots	60	90	120	150	180
Min:Sec	4:12	2:48	2:06	1:41	1:24

2000	4000	VXV R-231	GROSS	One Minute Holding Pattern					
↑	hdg 240°		△						
				NEVLN VXV 4.7					
				BUZBY OM VXV 2.5 RADAR					
				VXV 5					
				VXV 6.6					
				2364					
				2400					
				3000					
				053°					
				233°					
				10000					
				4100					
				GS 3.00°					
				TCH 53					
				0.3	1.3	2.5 NM	2.4 NM	4.6 NM	
CATEGORY	A	B	C	D	E				
S-ILS 23R	1184/18					200	(200-½)		
S-LOC 23R	1560/24		576 (600-½)		1560-1¼		576 (600-1¼)		
CIRCLING	1560-1		574 (600-1)		1660-2		674 (700-2)		
					1900-3		914 (1000-3)		

SE-1, 05 SEP 2024 to 03 OCT 2024

SE-1, 05 SEP 2024 to 03 OCT 2024