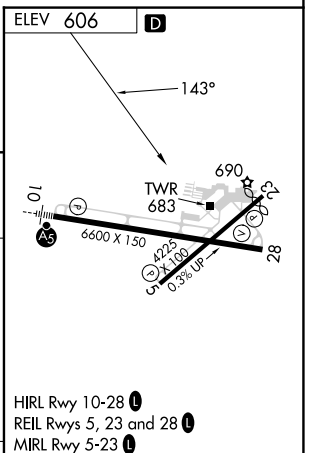
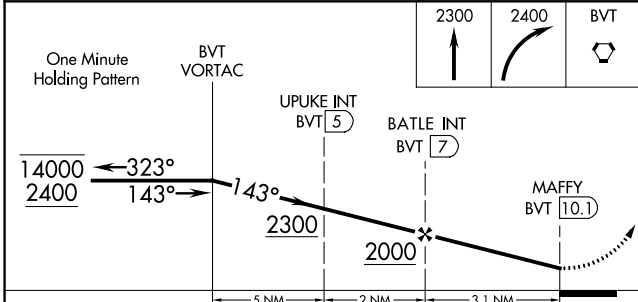
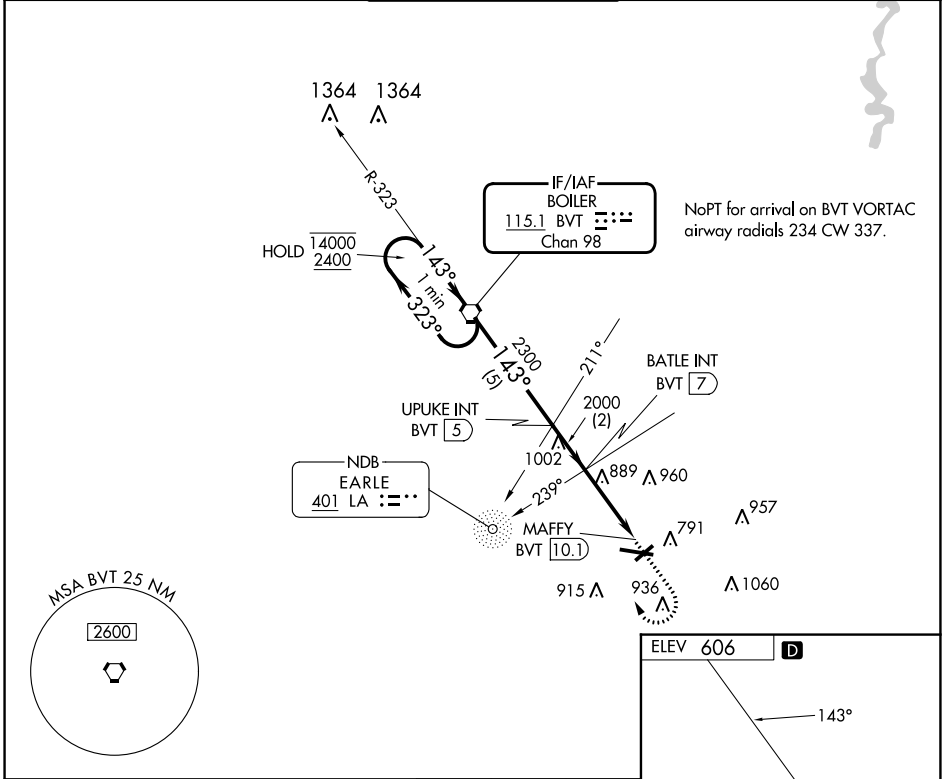


VORTAC BVT <b>115.1</b> Chan <b>98</b>	APP CRS <b>143°</b>	Rwy Idg TDZE Apt Elev	<b>N/A</b> <b>N/A</b> <b>606</b>
--	------------------------	-----------------------------	--

**VOR-A**  
PURDUE UNIVERSITY (LAF)

ADF or DME required.		MISSED APPROACH: Climb to 2300 then climbing right turn to 2400 direct BVT VORTAC and hold.		
<p><b>∇</b> Circling Rwy 23 NA at night.</p> <p><b>⚠</b> When local altimeter setting not received, use Vermilion Rgnl altimeter setting and increase all MDAs 100 feet and Cat C and D visibility ½ SM.</p>				
ATIS <b>127.75</b>	GRISSOM APP CON ★ <b>123.85 291.675</b>	LAFAYETTE TOWER ★ <b>119.6 (CTAF) 343.625</b>	GND CON <b>121.9 343.625</b>	UNICOM <b>122.95</b>



CATEGORY	A	B	C	D	FAF to MAP 3.1 NM					
CIRCLING	1160-1	554 (600-1)	1320-2 714 (800-2)	1420-2¾ 814 (900-2¾)	Knots	60	90	120	150	180
					Min:Sec	3:06	2:04	1:33	1:14	1:02

EC-2, 05 SEP 2024 to 03 OCT 2024

EC-2, 05 SEP 2024 to 03 OCT 2024