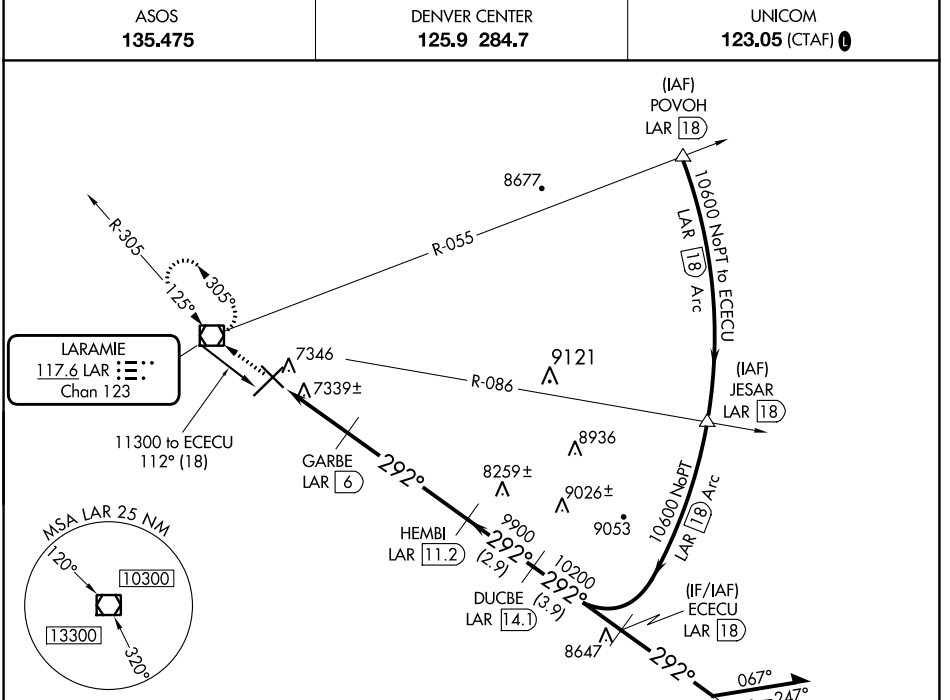


VOR/DME LAR 117.6 Chan 123	APP CRS 292°	Rwy Idg TDZE Apt Elev	6301 7278 7284
---	------------------------	-----------------------------	---

VOR/DME RWY 30

LARAMIE RGNL (L.A.R.)

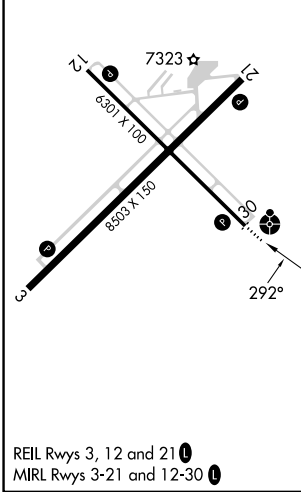
	ASOS 135.475		DENVER CENTER 125.9 284.7		UNICOM 123.05 (CTAF) 0
	MISSED APPROACH: Climb to 9600 direct LAR VOR/DME and hold, continue climb-in-hold to 9600.				



NW-1, 05 SEP 2024 to 03 OCT 2024

NW-1, 05 SEP 2024 to 03 OCT 2024

ELEV 7284	D	TDZE 7278
-----------	----------	-----------



REIL Rws 3, 12 and 21
MIRL Rws 3-21 and 12-30

9600	LAR	ECECU LAR 18	Remain within 10 NM
↑	☐		
	GARBE LAR 6	HEMBI LAR 11.2	DUCBE LAR 14.1
	LAR 3.1	LAR 4	LAR 6
	8220	9900	10200
	0.9	2 NM	5.2 NM
		2.9 NM	3.9 NM
CATEGORY	A	B	C
S-30	7600-¾	322 (400-¾)	7600-1
CIRCLING	7660-1 376 (400-1)	7760-1 476 (500-1)	7880-1½ 596 (600-1½)
			7920-2 636 (700-2)