

FORT SILL, OKLAHOMA

RNAV (GPS) RWY 36

HENRY POST AAF (KFSI)

| | | |
|-------------------------|------------------------------|---|
| APCH CRS 356° | Rwy Idg TDZE Arpt Elev | 5002 1187 1188 |
|-------------------------|------------------------------|---|

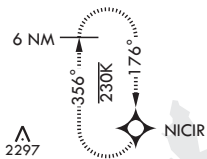
-(USA)

▼ * When ALS inop, increase RVR to 45, vis to 7/8 mile.
 ** When ALS inop, increase CAT AB RVR to 55, vis to 1 mile; CAT CD vis to 1 3/8 miles.



MISSED APPROACH: Climb to 4000 direct NICIR and hold. Radar required for MA to avoid active airspace.

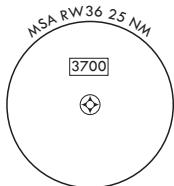
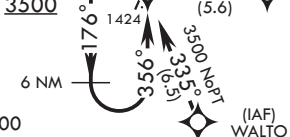
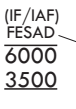
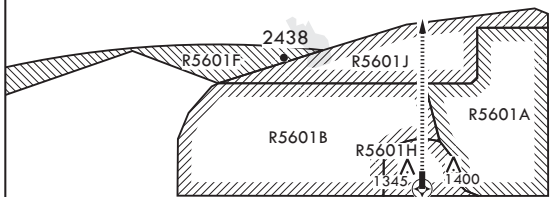
| | | | | | |
|--------------------------------|--|--|--------------------------------------|----------------------------------|-----|
| ATIS 135.425 354.025 | FORT SILL APP CON/DEP CON 120.55 322.4 | TOWER * 124.95 (CTAF) 0 229.4 | POST GND CON 121.7 279.575 | CLNC DEL 121.7 279.575 | ASR |
|--------------------------------|--|--|--------------------------------------|----------------------------------|-----|



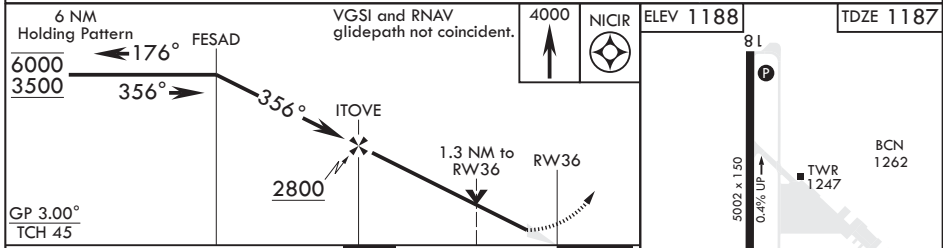
When local altimeter setting not received, use Lawton-Fort Sill RGNL altimeter setting.

For uncompensated Baro-VNAV systems, Procedure NA below -17°C or above 54°C.

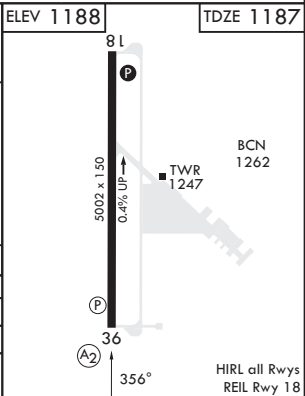
RADAR or ATC coordination required to avoid active special use airspace.



EMERG SAFE ALT 100 NM 4500



| | | | | |
|-------------------|-----------------------|-----------------------|-------------------------|-------------------------|
| CATEGORY | A | B | C | D |
| LNAV/VNAV DA* | 1490/40 | | 303 | (400-¾) |
| LNAV MDA** | 1640/40 | 453 (500-¾) | 1640/55 | 453 (500-1) |
| C CIRCLING | 1680-1 492 (500-1) | 1760-1 572 (600-1) | 1820-1¼ 632 (700-1¼) | 1920-2¼ 732 (800-2¼) |



FORT SILL, OKLAHOMA
Amdt 3 30NOV23

34°39'N - 98°24'W

HENRY POST AAF (KFSI)

RNAV (GPS) RWY 36

SC-1, 05 SEP 2024 to 03 OCT 2024

SC-1, 05 SEP 2024 to 03 OCT 2024

HIRL all Rwy's
REL Rwy 18