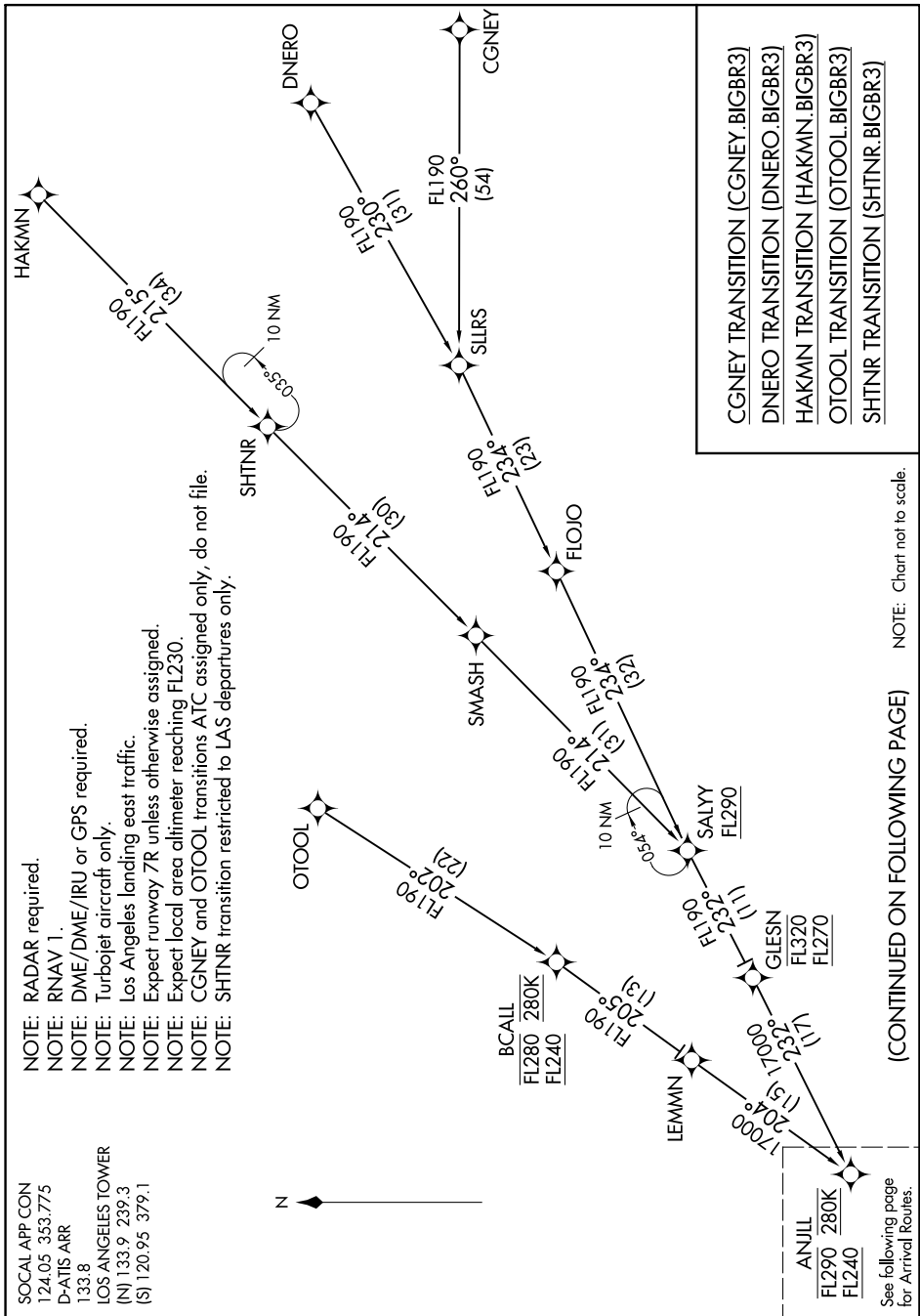


BIGBR THREE ARRIVAL (RNAV) Transition Routes

SW-3, 05 SEP 2024 to 03 OCT 2024

SOCAL APP CON  
124.05 353.775  
D-ATIS ARR  
133.8  
LOS ANGELES TOWER  
(N) 133.9 239.3  
(S) 120.95 379.1

- NOTE: RADAR required.
- NOTE: RNAV 1.
- NOTE: DME/DME/IRU or GPS required.
- NOTE: Turbopjet aircraft only.
- NOTE: Los Angeles landing east traffic.
- NOTE: Expect runway 7R unless otherwise assigned.
- NOTE: Expect local area altimeter reaching FL230.
- NOTE: CGNEY and OTOOL transitions ATC assigned only, do not file.
- NOTE: SHTNR transition restricted to LAS departures only.



(CONTINUED ON FOLLOWING PAGE) NOTE: Chart not to scale.

SW-3, 05 SEP 2024 to 03 OCT 2024

BIGBR THREE ARRIVAL (RNAV) Transition Routes

See following page for Arrival Routes.