

|  |                        |  |
|--|------------------------|--|
| LOC/DME I-LAX<br><b>109.9</b><br>Chan 36 | APP CRS<br><b>251°</b> | Rwy ldg <b>11095</b><br>TDZE <b>104</b><br>Apt Elev <b>128</b> |
|--|------------------------|--|

# ILS RWY 25L (CAT II & III)

LOS ANGELES INTL (LAX)

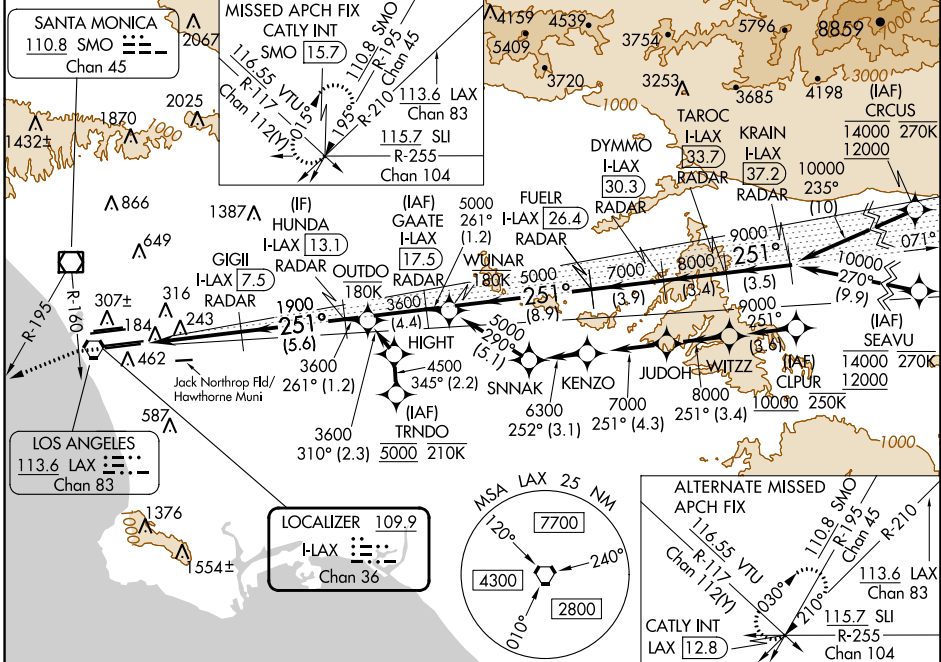
RNP APCH - GPS. From CLIPUR or CRCUS or SEAVU or TRNDO.  
DME or RADAR required.

Simultaneous approach authorized.  
Simultaneous approach authorized with HHR.



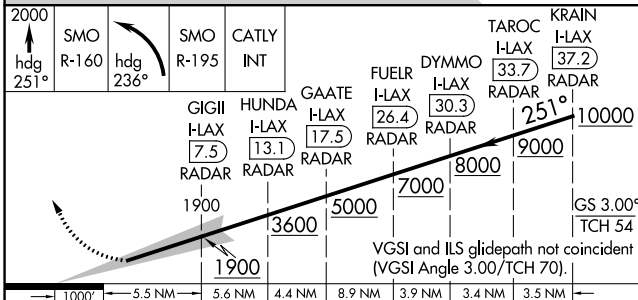
MISSED APPROACH: Climb to 2000 on heading 251° until crossing the SMO R-160 then left turn on heading 236° and on the SMO R-195 to CATLY INT/SMO 15.7 DME and hold.

|   |   |                                   |  |   |   |       |
|---|---|-----------------------------------|--|---|---|-------|
| D-ATIS<br>ARR <b>133.8</b><br>DEP <b>135.65</b> | SOCAL APP CON<br><b>124.3 363.2</b><br>[APCH FM WEST] (225°-044°) | <b>124.9 269.0</b><br>[090°-224°] | LOS ANGELES TOWER<br><b>N 133.9 239.3</b><br><b>S 120.95 379.1</b> | GND CON<br><b>N 121.65 327.0</b><br><b>S 121.75 327.0</b><br><b>W 121.4 327.0</b> | CLNC DEL<br><b>120.35</b><br><b>327.0</b> | CPDLC |
|---|---|-----------------------------------|--|---|---|-------|



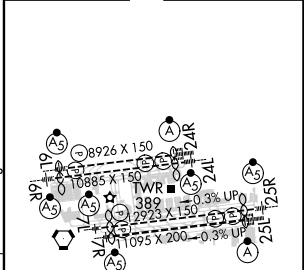
SW-3, 05 SEP 2024 to 03 OCT 2024

SW-3, 05 SEP 2024 to 03 OCT 2024



|           |                             |   |   |   |
|-----------|-----------------------------|---|---|---|
| CATEGORY  | A                           | B | C | D |
| S-ILS 25L | CAT II RA 107/12 100 DA 204 |   |   |   |
| S-ILS 25L | CAT III RVR 06              |   |   |   |

|          |          |          |
|----------|----------|----------|
| ELEV 128 | <b>D</b> | TDZE 104 |
|----------|----------|----------|



## CATEGORY II & III ILS - SPECIAL AIRCREW & AIRCRAFT CERTIFICATION REQUIRED

TDZ/CL Rwy 6R, 7L, 24R, and 25L  
HIRL all Rwy's