

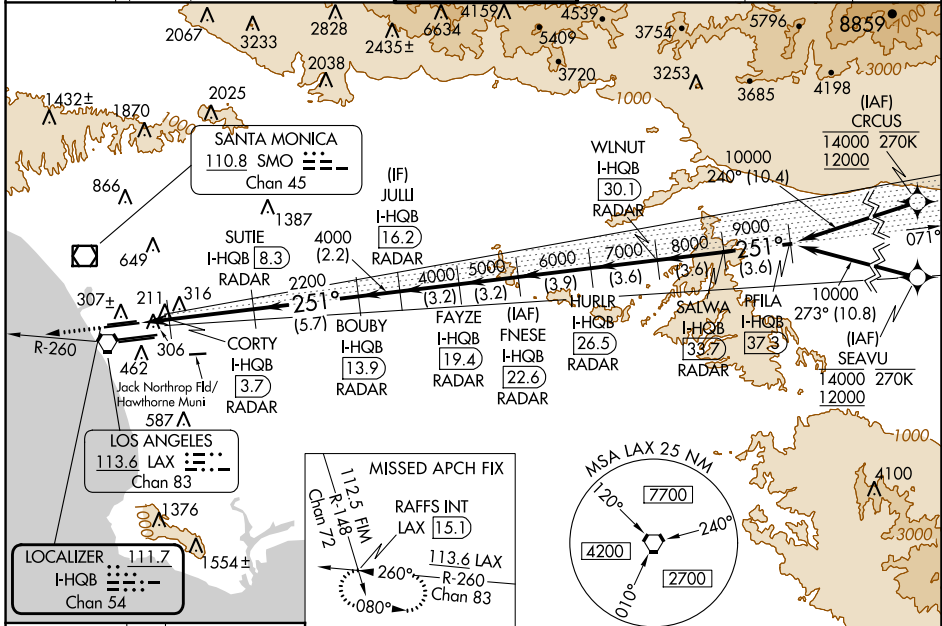
LOC/DME I-HQB 111.7 Chan 54	APP CRS 251°	Rwy Idg TDZE Apt Elev	24L 9483 123 128	24R 8926 122 128
---	------------------------	-----------------------------	--	--

ILS or LOC RWY 24L

LOS ANGELES INTL (LAX)

RNAV 1-GPS or RADAR required for procedure entry. DME or RADAR required. From CRCUS: RNAV 1-GPS required. From SEAVU: RNAV 1-GPS required.		MALSR Rwy 24L 	ALSF-2 Rwy 24R 	MISSED APPROACH: Climb to 2000 on heading 251° and LAX VORTAC R-260 to RAFFS INT/LAX 15.1 DME and hold.
Simultaneous approach authorized with HHR. Inop table does not apply to Sidestep Rwy 24R Cat A and B. Simultaneous approach authorized. LOC procedure NA during simultaneous operations with HHR LOC RWY 25. For inop ALS, increase Sidestep 24R Cat C visibility to 1½ SM. For inop ALS, increase S-LOC 24L Cat C/D visibility to RVR 5500. #RVR 1800 authorized with use of FD or AP or HUD to DA.				

D-ATIS ARR 133.8 DEP 135.65	SOCAL APP CON 124.3 363.2 [APCH FM WEST] 124.5 235.975 [225°-044°]	124.9 269.0 [090°-224°] 128.5 360.7 [045°-089°]	LOS ANGELES TOWER N 133.9 239.3 S 120.95 379.1	GND CON N 121.65 327.0 S 121.75 327.0 W 121.4 327.0	CLNC DEL 120.35 327.0	CPDLC
---	--	--	--	---	---	-------



SW-3, 05 SEP 2024 to 03 OCT 2024

SW-3, 05 SEP 2024 to 03 OCT 2024

ELEV 128	TDZE 24L 123	TDZE 24R 122	VGSI and ILS glidepath not coincident (VGSI Angle 3.00/TCH 79).			
		SALWA I-HQB 37.3 PFILA I-HQB 37.3 WLNUT I-HQB 30.1 HURLR I-HQB 26.5 BOUBY I-HQB 16.2 JULI I-HQB 16.2 FAYZE I-HQB 19.4 FNESE I-HQB 22.6 SUTIE I-HQB 8.3 CORTY I-HQB 3.7 BOUBY I-HQB 13.9 RAFFS INT I-HQB 15.1 LOCALIZER I-HQB 111.7 LOS ANGELES I-HQB 113.6 SANTA MONICA I-HQB 110.8				
LOC only. I-HQB 1.9 I-HQB 2.9 I-HQB 3.7 I-HQB 8.3 I-HQB 13.9 I-HQB 16.2 I-HQB 19.4 I-HQB 22.6 I-HQB 26.5 I-HQB 30.1 I-HQB 37.3		2000 10000 9000 8000 7000 6000 5000 4000 4000 4000 2200 740 2200				
CATEGORY A S-ILS 24L# 323/24 S-LOC 24L 500/24 377 (400-½) SIDESTEP 24R 500/55 378 (400-1)		CATEGORY B S-ILS 24L# 200 (200-½) S-LOC 24L 377 (400-½)		CATEGORY C S-ILS 24L# 500/35 S-LOC 24L 377 (400-¾)		
TDZ/CL Rwy 6L, 7L, 24R, and 25L HIRL all Rwy FAF to MAP 6.4 NM Knots 60 90 120 150 180 Min:Sec 6:24 4:16 3:12 2:34 2:08		GS 3.00° TCH 59				