

| | | | | |
|---|------------------------|-----------------------------|--|--|
| LOC/DME I-OSS 108.5 Chan 22 | APP CRS 251° | Rwy Idg TDZE Apt Elev | 24R 8926 122 128 | 24L 9483 123 128 |
|---|------------------------|-----------------------------|--|--|

ILS or LOC RWY 24R

LOS ANGELES INTL (LAX)

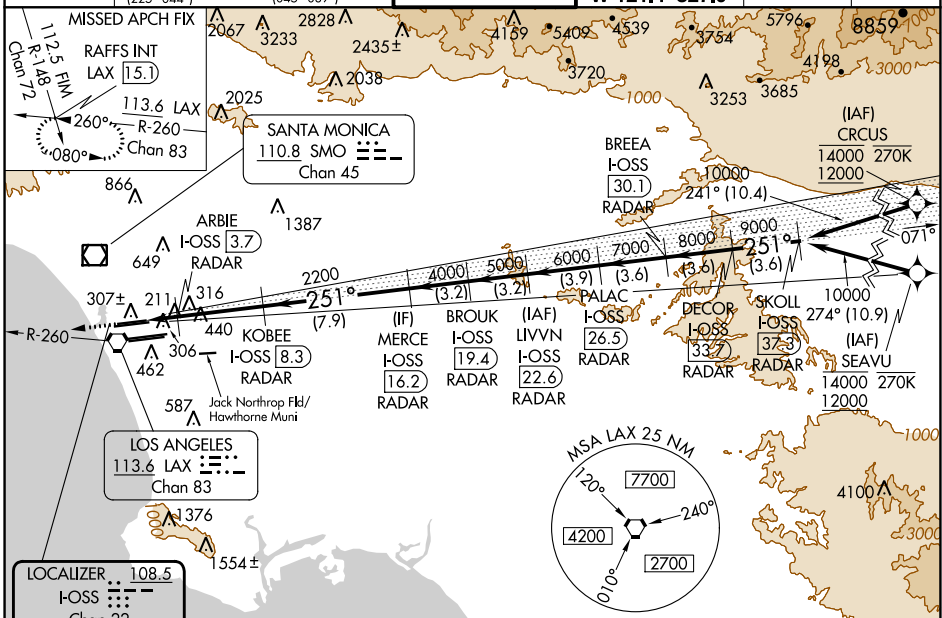
From CRCLUS, SEAVU: RNAV 1-GPS required. DME or RADAR required.

Simultaneous approach authorized with HHR. LOC procedure NA during simultaneous operations with HHR LOC RWY 25. Simultaneous approach authorized. For inop ALS, increase S-LOC 24R Cat C/D visibility to RVR 5500.



MISSED APPROACH: Climb to 2000 on heading 251° and LAX VORTAC R-260 to RAFFS INT/LAX 15.1 DME and hold.

| | | | | | | |
|---|--|-----------------------------------|--|---|---|-------|
| D-ATIS ARR 133.8 DEP 135.65 | SOCAL APP CON 124.3 363.2 [APCH FM WEST] [225°-044°] | 124.9 269.0 [090°-224°] | LOS ANGELES TOWER N 133.9 239.3 S 120.95 379.1 | GND CON N 121.65 327.0 S 121.75 327.0 W 121.4 327.0 | CLNC DEL 120.35 327.0 | CPDLC |
|---|--|-----------------------------------|--|---|---|-------|



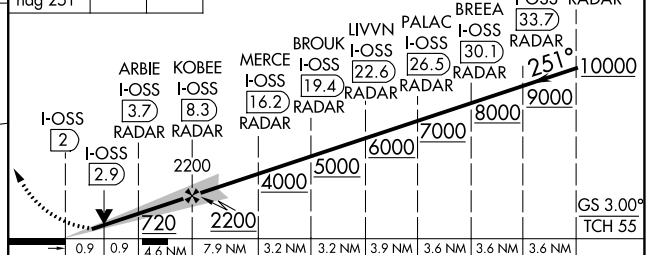
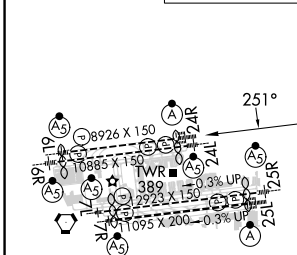
SW-3, 05 SEP 2024 to 03 OCT 2024

SW-3, 05 SEP 2024 to 03 OCT 2024

| | | |
|----------|--------------|--------------|
| ELEV 128 | TDZE 24R 122 | TDZE 24L 123 |
|----------|--------------|--------------|

↑ 2000
hdg 251°

VGSI and ILS glidepath not coincident (VGSI Angle 3.00/TCH 73).



| | | | | | |
|---|--------------------|------|--------------------|---------------------|------|
| TDZ/CL Rwy 6L, 7L, 24R, and 25L HIRL all Rwy | FAF to MAP 6.4 NM | | | | |
| Knots | 60 | 90 | 120 | 150 | 180 |
| Min:Sec | 6:24 | 4:16 | 3:12 | 2:34 | 2:08 |
| S-ILS 24R | 322/18 200 (200-½) | | | | |
| S-LOC 24R | 480/24 358 (400-½) | | 480/30 358 (400-¾) | | |
| SIDESTEP 24L | 500/55 377 (400-1) | | | 500-1½ 377 (400-1½) | |