

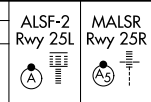
LOC/DME I-LAX	APP CRS	Rwy ldg	25L	25R
<b>109.9</b>	<b>251°</b>	<b>11095</b>	<b>11134</b>	
Chan <b>36</b>		TDZE	<b>104</b>	<b>104</b>
		Apt Elev	<b>128</b>	<b>128</b>

# ILS or LOC RWY 25L

LOS ANGELES INTL (LAX)

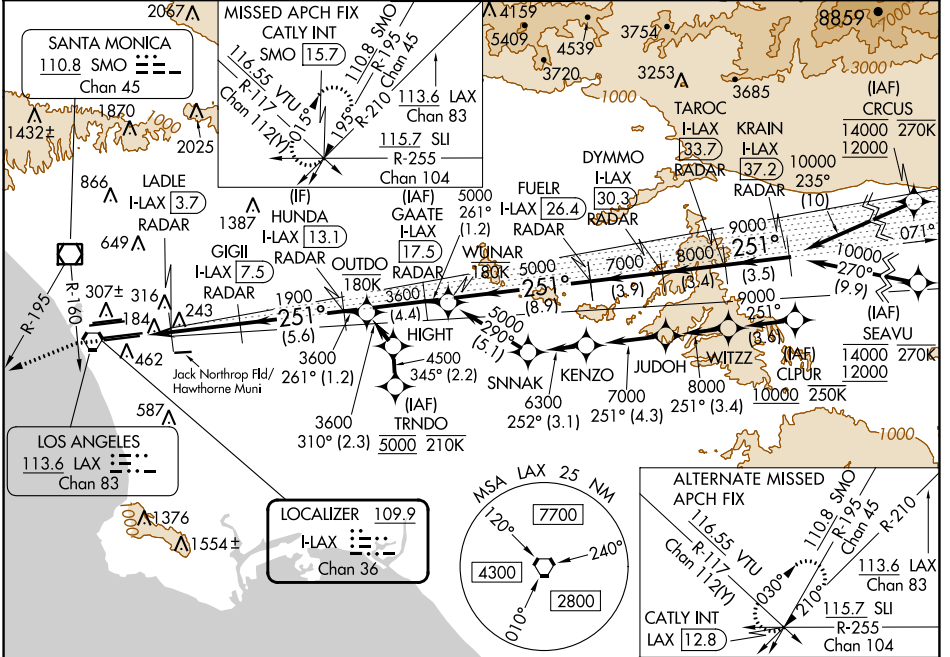
RNP APCH - GPS. From CLIPUR or CRUCUS or SEAVU or TRNDO. DME or RADAR required.

Simultaneous approach authorized. Simultaneous approach authorized with HHR.

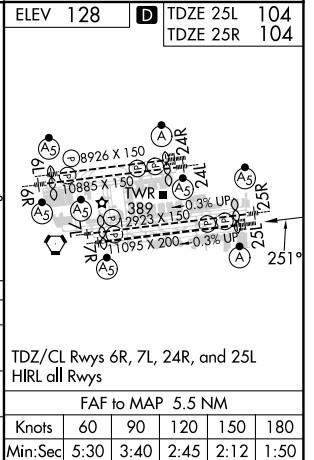


MISSED APPROACH: Climb to 2000 on heading 251° until crossing the SMO R-160, then left turn on heading 236° and on the SMO R-195 to CATLY INT/ SMO 15.7 DME and hold.

D-ATIS	SOCAL APP CON	LOS ANGELES TOWER	GND CON	CLNC DEL	CPDLC
ARR <b>133.8</b>	<b>124.3 363.2</b> (APCH FM WEST)	<b>124.9 269.0</b> (090°-224°)	<b>N 121.65 327.0</b> <b>S 121.75 327.0</b> <b>W 121.4 327.0</b>	<b>120.35</b> <b>327.0</b>	
DEP <b>135.65</b>	<b>124.5 235.975</b> (225°-044°)	<b>128.5 360.7</b> (045°-089°)			



2000	SMO	SMO	CATLY	TAROC	KRAIN
hdg 251°	R-160	R-195	INT	I-LAX	I-LAX
	hdg 236°			33.7	37.2
				RADAR	RADAR
	LADLE	GIGLI	HUNDA	FUELR	DYMMO
	I-LAX (3.7)	I-LAX (7.5)	I-LAX (13.1)	I-LAX (17.5)	I-LAX (30.3)
	RADAR	RADAR	RADAR	RADAR	RADAR
	1900	3600	5000	7000	8000
	I-LAX (2)				
	I-LAX (3)				
	700	1900	3600	5000	7000
					GS 3.00°
					TCH 54
	1 NM	0.8	3.7 NM	5.6 NM	4.4 NM
			8.9 NM	3.9 NM	3.4 NM
				3.4 NM	3.5 NM
CATEGORY	A	B	C	D	
S-ILS 25L	304/18		200 (200-1/2)		
S-LOC 25L	480/24		376 (400-1/2)		480/35 376 (400-3/4)
SIDESTEP 25R	480/55		376 (400-1)		480-1 1/2 376 (400-1 1/2)



SW-3, 05 SEP 2024 to 03 OCT 2024

SW-3, 05 SEP 2024 to 03 OCT 2024