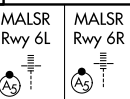


LOC/DME I-UWU <b>108.5</b> Chan <b>22</b>	APP CRS <b>071°</b>	Rwy ldg <b>6L</b> TDZE <b>119</b> Apt Elev <b>128</b>	<b>6R</b> <b>9748</b> <b>116</b> <b>128</b>
---	------------------------	---	--

# ILS or LOC RWY 6L

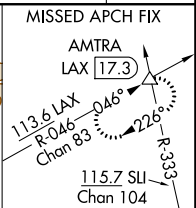
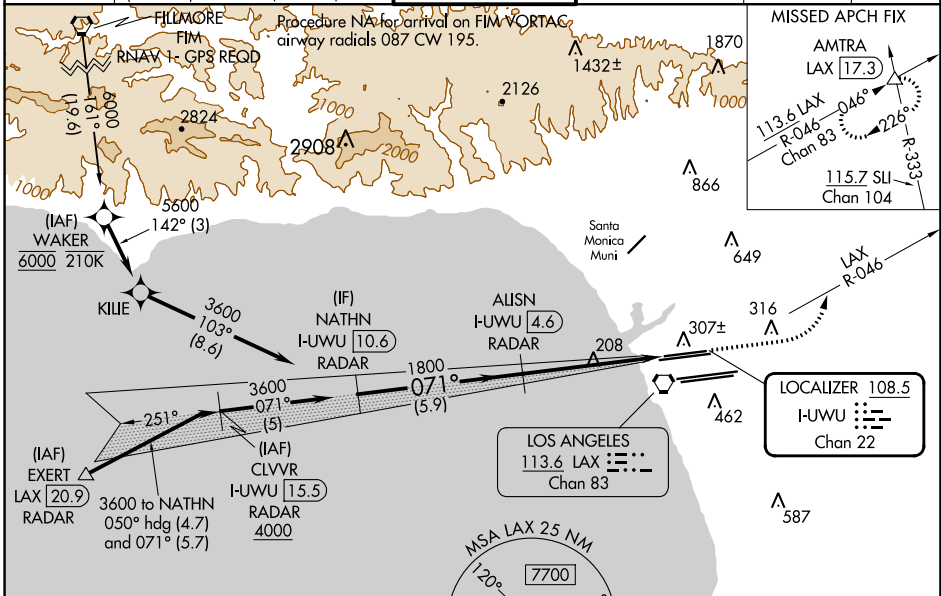
LOS ANGELES INTL (LAX)

**▼** Inop table does not apply to Sidestep 6R Cats A/B. For inop ALS, increase S-LOC 6L Cat C/D visibility to RVR 5500. Simultaneous approach authorized. Autopilot coupled approach NA below 503.



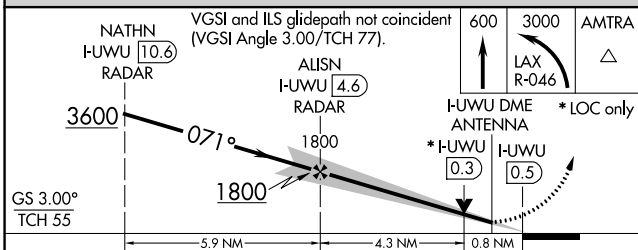
**MISSED APPROACH:** Climb to 600 then climbing left turn to 3000 on LAX VORTAC R-046 to AMTRA INT/LAX 17.3 DME and hold.

D-ATIS ARR <b>133.8</b> DEP <b>135.65</b>	SOCAL APP CON <b>124.3 363.2</b> (APCH FM WEST) <b>124.5 235.975</b> (223°-044°)	<b>124.9 269.0</b> (090°-224°) <b>128.5 360.7</b> (043°-089°)	<b>LOS ANGELES TOWER</b> <b>N 133.9 239.3</b> <b>S 120.95 379.1</b>	GND CON <b>N 121.65 327.0</b> <b>S 121.75 327.0</b> <b>W 121.4 327.0</b>	CLNC DEL <b>120.35</b> <b>327.0</b>	CPDLC
---	--	--	---	---	---	-------



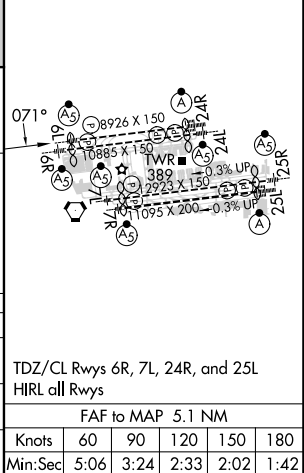
Procedure NA for arrivals at EXERT on V25 southwest bound, V27 northwest bound.

## DME or RADAR REQUIRED



ELEV <b>128</b>	<b>D</b> TDZE <b>6L 119</b>
	TDZE <b>6R 116</b>

CATEGORY	A	B	C	D
S-ILS 6L	369/24 250 (300-½)			
S-LOC 6L	460/24 341 (400-½)		460/30 341 (400-¾)	
SIDESTEP 6R	460/55 344 (400-1)			460-1½ 344 (400-1½)



SW-3, 05 SEP 2024 to 03 OCT 2024

SW-3, 05 SEP 2024 to 03 OCT 2024