

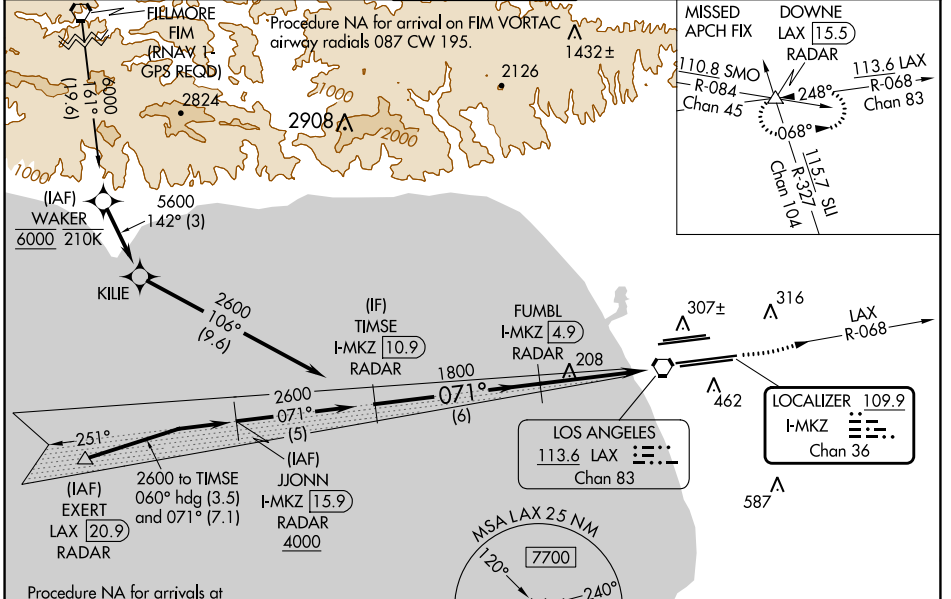
LOC/DME I-MKZ	APP CRS	Rwy Idg	7R	7L
109.9	071°		11095	11259
Chan 36		TDZE	128	128
		Apt Elev	128	128

ILS or LOC RWY 7R

LOS ANGELES INTL (LAX)

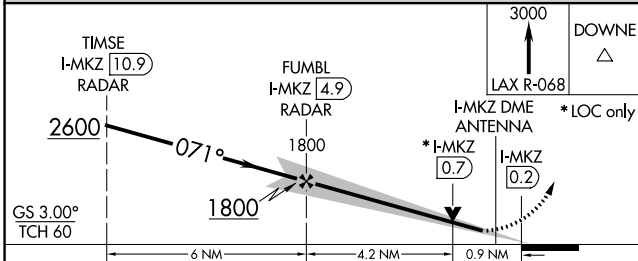
Simultaneous approach authorized. DME or RADAR required.
 Inop table does not apply to Sidestep Rwy 7L Cats A and B.
 # RVR 1800 authorized with use of FD or AP or HUD to DA.

D-ATIS ARR 133.8 DEP 135.65	SOCAL APP CON 124.3 363.2 (APCH FM WEST) 124.5 235.975 (225°-044°)	124.9 269.0 (090°-224°) 128.5 360.7 (045°-089°)	LOS ANGELES TOWER N 133.9 239.3 S 120.95 379.1	GND CON N 121.65 327.0 S 121.75 327.0 W 121.4 327.0	CLNC DEL 120.35 327.0	CPDLC
---	--	--	--	---	---	-------



Procedure NA for arrivals at EXERT on V25 southwest bound.

ELEV 128	TDZE 7R 128	TDZE 7L 128
----------	-------------	-------------



TDZ/CL Rwy 6R, 7L, 24R, and 25L HIRL all Rwy	FAF to MAP 5.1 NM
Knots	60 90 120 150 180
Min:Sec	5:06 3:24 2:33 2:02 1:42

CATEGORY	A	B	C	D
S-ILS 7R#	328/24 200 (200-1/2)			
S-LOC 7R	460/24	332 (400-1/2)	460/26	332 (400-1/2)
SIDESTEP 7L	520/55 392 (400-1)		520-1 1/2 392 (400-1/2)	

SW-3, 05 SEP 2024 to 03 OCT 2024

SW-3, 05 SEP 2024 to 03 OCT 2024