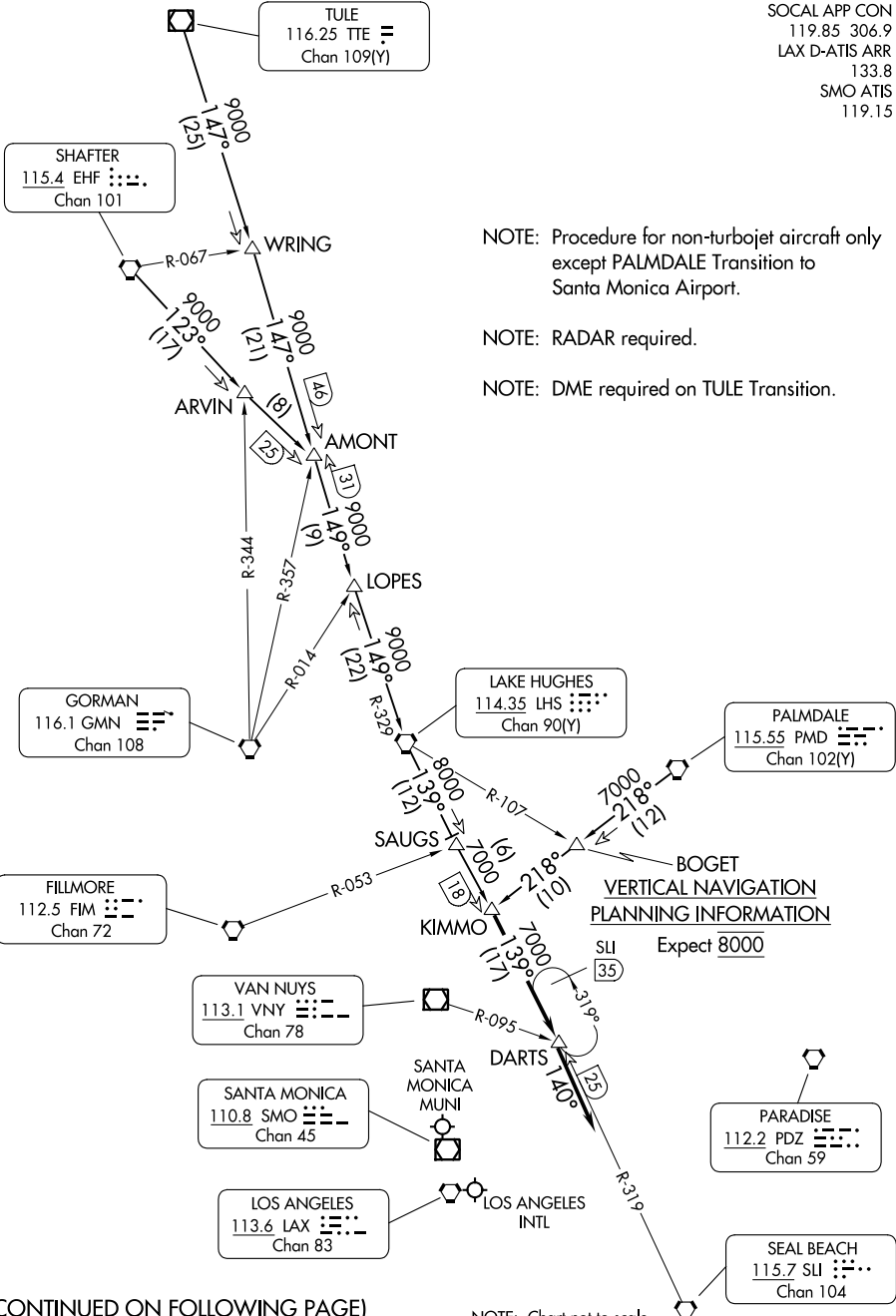


KIMMO THREE ARRIVAL

AL-237 (FAA)

LOS ANGELES, CALIFORNIA

SOCAL APP CON
 119.85 306.9
 LAX D-ATIS ARR
 133.8
 SMO ATIS
 119.15



NOTE: Procedure for non-turbojet aircraft only except PALMDALE Transition to Santa Monica Airport.

NOTE: RADAR required.

NOTE: DME required on TULE Transition.

**VERTICAL NAVIGATION
 PLANNING INFORMATION**

Expect 8000

NOTE: Chart not to scale.

SW-3, 05 SEP 2024 to 03 OCT 2024

SW-3, 05 SEP 2024 to 03 OCT 2024

(CONTINUED ON FOLLOWING PAGE)

KIMMO THREE ARRIVAL

LOS ANGELES, CALIFORNIA