

# LAXX ONE DEPARTURE

AL-237 (FAA)

LOS ANGELES INTL (LAX)  
LOS ANGELES, CALIFORNIA

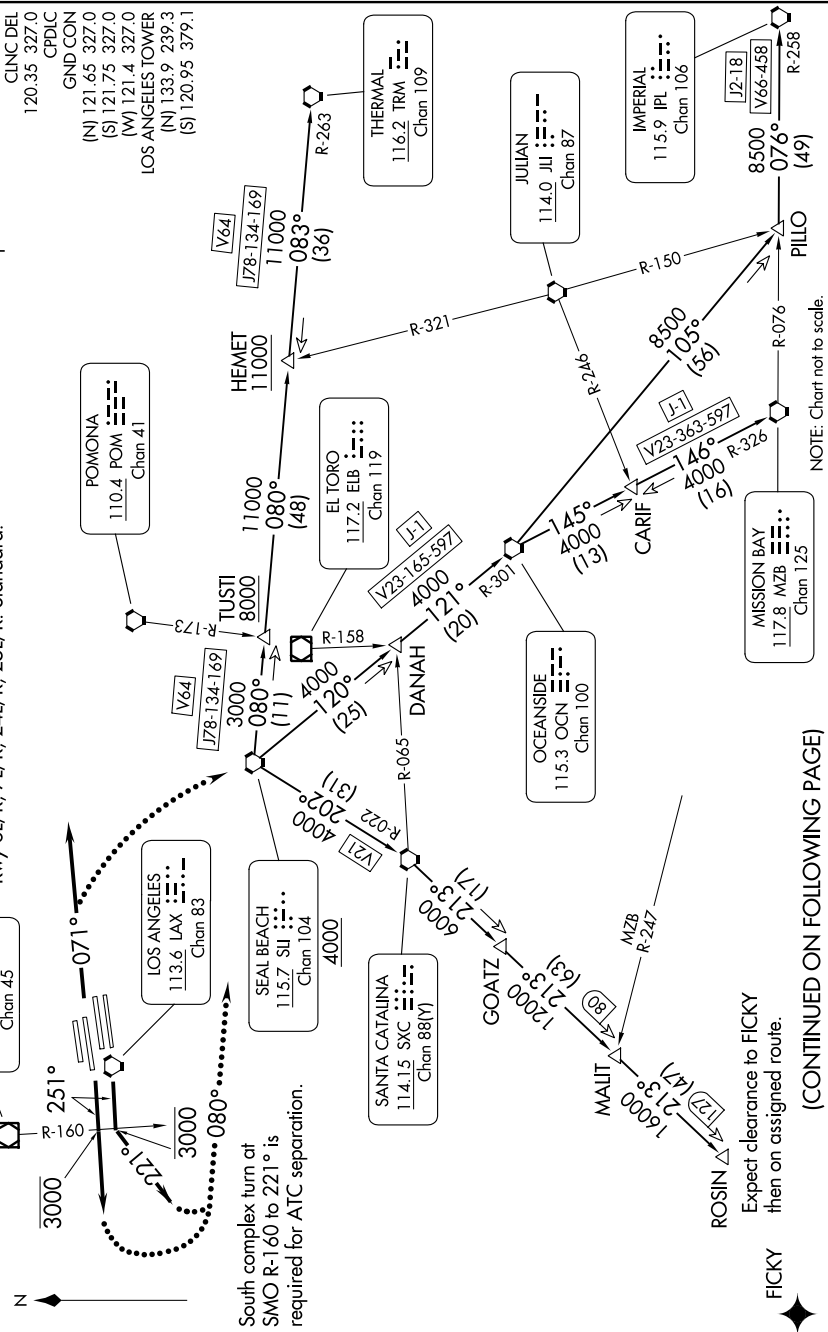
SW-3, 05 SEP 2024 to 03 OCT 2024

**TOP ALTITUDE:  
ASSIGNED BY ATC**

SOCAL DEP CON  
124.3 363.2 (045°-224°)  
125.2 263.025 (225°-044°)  
D-ATIS DEP  
135.65  
CINCL DEL  
120.35 327.0  
CPDLC  
GND CON  
(N) 121.65 327.0  
(S) 121.75 327.0  
(W) 121.4 327.0  
LOS ANGELES TOWER  
(N) 133.9 239.3  
(S) 120.95 379.1

NOTE: This departure is for  
turboprop aircraft only.  
NOTE: RADAR and DME required.

TAKEOFF MINIMUMS  
Rwy 6L/R, 7L/R, 24L/R, 25L/R: Standard.



NOTE: Chart not to scale.

(CONTINUED ON FOLLOWING PAGE)

# LAXX ONE DEPARTURE

LOS ANGELES, CALIFORNIA  
LOS ANGELES INTL (LAX)

SW-3, 05 SEP 2024 to 03 OCT 2024