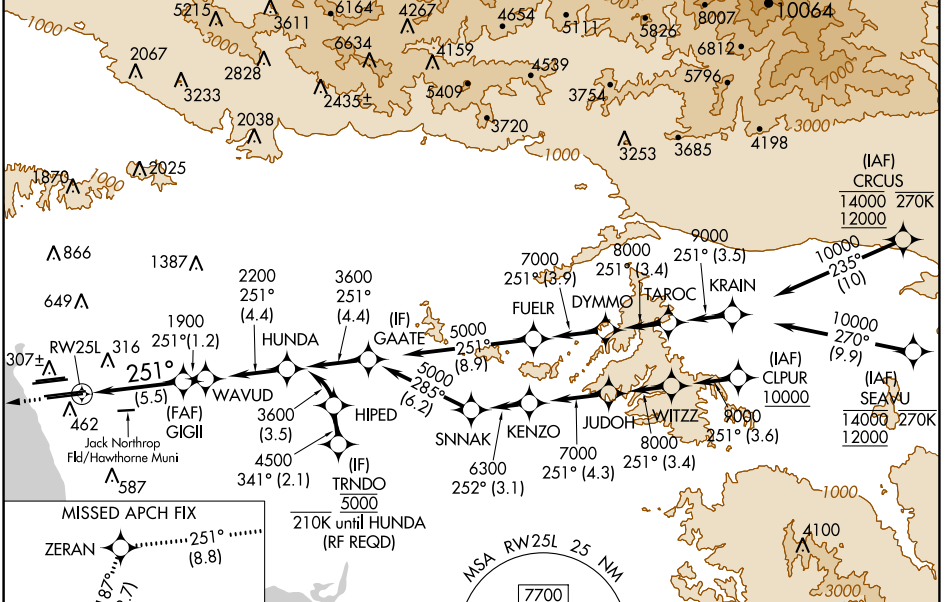


APP CRS	Rwy Idg	<b>11095</b>
<b>251°</b>	TDZE	<b>104</b>
	Apf Elev	<b>128</b>

# RNAV (RNP) Z RWY 25L

LOS ANGELES INTL (LAX)

RNP AR APCH.		ALSF-2 		MISSED APPROACH: Climb to 2000 on track 251° to ZERAN and on track 187° to CATLY and hold.		
▼ GPS required. For uncompensated Baro-VNAV systems, procedure NA below 5°C or above 54°C. Simultaneous approach authorized. Simultaneous approach authorized with HHR.						
D-ATIS	SOCAL APP CON		LOS ANGELES TOWER	GND CON	CLNC DEL	CPDLC
ARR <b>133.8</b>	<b>124.3</b>	<b>363.2</b>	<b>N 133.9</b>	<b>N 121.65</b>	<b>120.35</b>	
DEP <b>135.65</b>	<b>124.5</b>	<b>235.975</b>	<b>S 239.3</b>	<b>S 121.75</b>	<b>327.0</b>	
	(225°-044°)	(090°-224°)	<b>S 120.95</b>	<b>W 121.4</b>	<b>327.0</b>	
		(045°-089°)	<b>379.1</b>	<b>327.0</b>		



SW-3, 05 SEP 2024 to 03 OCT 2024

SW-3, 05 SEP 2024 to 03 OCT 2024

ELEV 128		TDZE 104	
2000	ZERAN	tr 187°	CATLY
tr 251°			
VGSI and RNAV glidepath not coincident (VGSI Angle 3.00/TCH 70). WAVUD			
		GIGI 1900 251° 2200 GP 3.00° TCH 54	
5.5 NM		1.2 NM	
CATEGORY	A	B	C
RNP 0.15 DA		445/30	341 (400-5%)
RNP 0.30 DA		543/50	439 (500-1)
<b>AUTHORIZATION REQUIRED</b>			
TDZ/CL Rwws 6R, 7L, 24R, and 25L HIRL all Rwws			