

WAAS CH <b>61207</b> <b>W06B</b>	APP CRS <b>071°</b>	Rwy Idg <b>9748</b> TDZE <b>116</b> Apt Elev <b>128</b>
--	------------------------	---

# RNAV (GPS) Y RWY 6R

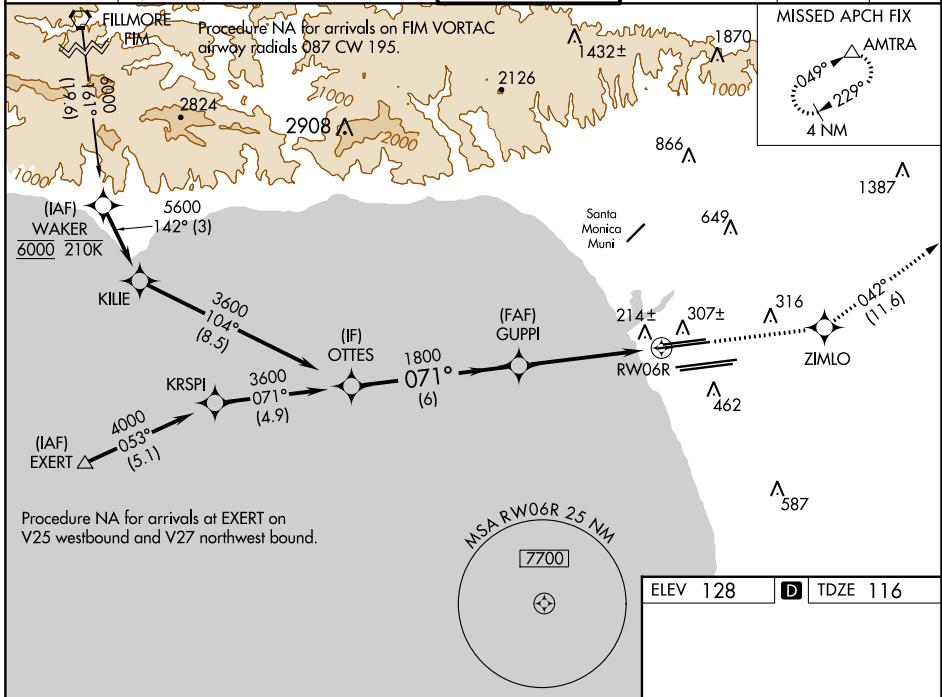
LOS ANGELES INTL (LAX)

▼ For uncompensated Baro-VNAV systems, LNAV/VNAV NA below 5°C (41°F) or above 54°C (130°F). DME/DME RNP-0.3 NA. For inop ALS, increase LNAV/VNAV all Cats visibility to RVR 4500, LNAV Cat C and D visibility to RVR 5500. Simultaneous approach authorized. LNAV procedure NA during simultaneous operations. Use of FD or AP providing RNAV track guidance required during simultaneous operations. # RVR 1800 authorized with use of FD or AP or HUD to DA.



MISSED APPROACH:  
Climb to 3000 direct ZIMLO and track 042° to AMTRA and hold.

D-ATIS ARR <b>133.8</b> DEP <b>135.65</b>	SOCAL APP CON <b>124.3 363.2</b> (APCH FM WEST) (225°-044°)	<b>124.9 269.0</b> (090°-224°) <b>128.5 360.7</b> (045°-089°)	LOS ANGELES TOWER <b>N 133.9 239.3</b> <b>S 120.95 379.1</b>	GND CON <b>N 121.65 327.0</b> <b>S 121.75 327.0</b> <b>W 121.4 327.0</b>	CLNC DEL <b>120.35 327.0</b>	CPDLC
---	--	--	--	---	---------------------------------	-------



SW-3, 05 SEP 2024 to 03 OCT 2024

SW-3, 05 SEP 2024 to 03 OCT 2024

Procedure NA for arrivals on FIM VORTAC airway radials 087 CW 195. Procedure NA for arrivals at EXERT on V25 westbound and V27 northwest bound.		ELEV 128	TDZE 116	
VGS1 and RNAV glidepath not coincident (VGS1 Angle 3.00/TCH 69). GP 3.00° TCH 53		3000 ZIMLO tr 042° AMTRA	071° 1800 1800 *0.9 NM to RWY 6R *LNAV only RWY 6R	
6 NM      4.2 NM      0.9 NM				
CATEGORY	A	B	C	D
LPV DA#		316/24	200 (200-½)	
LNAV/VNAV DA		398/24	282 (300-½)	
LNAV MDA	480/24	364 (400-½)	480/35	364 (400-¾)
TDZ/CL Rwy 6R, 7L, 24R, and 25L HIRL all Rwy's				