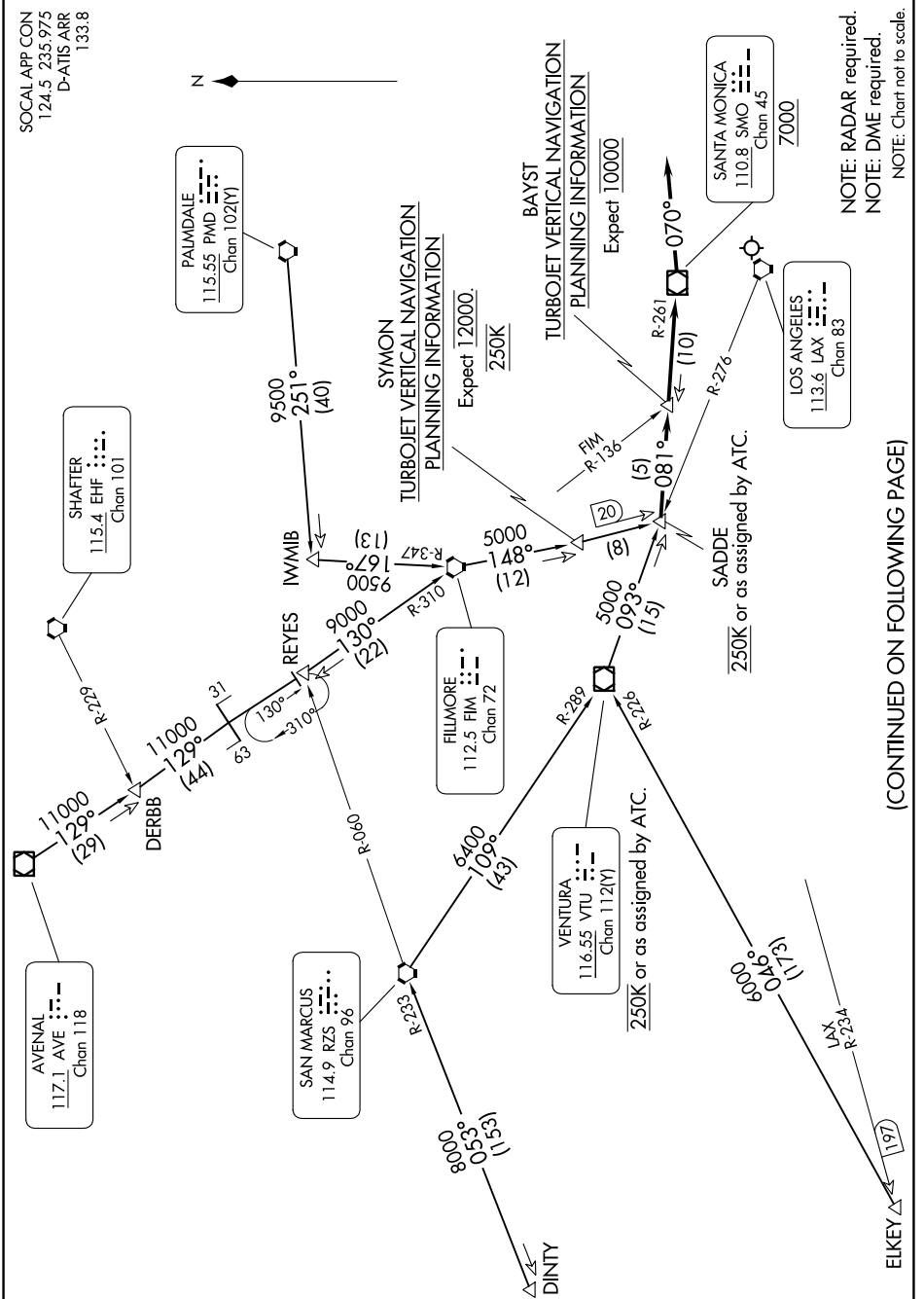


# SADDE EIGHT ARRIVAL

AL-237 (FAA)

LOS ANGELES INTL (LAX)  
LOS ANGELES, CALIFORNIA

SW-3, 05 SEP 2024 to 03 OCT 2024



NOTE: RADAR required.  
NOTE: DME required.  
NOTE: Chart not to scale.

(CONTINUED ON FOLLOWING PAGE)

SW-3, 05 SEP 2024 to 03 OCT 2024