

(SEBBY3.DAG) 23334

SEBBY THREE DEPARTURE

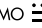
AL-237 (FAA)

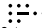
LOS ANGELES INTL (LAX)
LOS ANGELES, CALIFORNIA

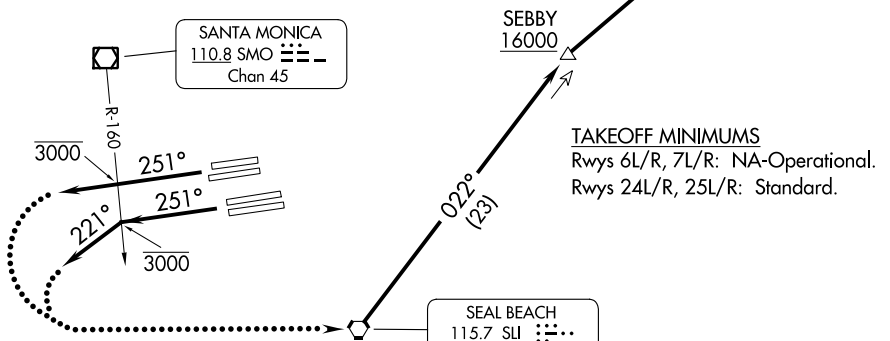
SOCAL DEP CON
 124.3 363.2 (045°-224°)
 125.2 263.025 (225°-044°)
 D-ATIS DEP
 135.65
 CLNC DEL
 120.35 327.0
 CPDLC
 GND CON
 (N) 121.65 327.0
 (S) 121.75 327.0
 (W) 121.4 327.0
 LOS ANGELES TOWER
 (N) 133.9 239.3
 (S) 120.95 379.1

**TOP ALTITUDE:
ASSIGNED BY ATC**

DAGGETT
 113.2 DAG 
 Chan 79

SANTA MONICA
 110.8 SMO 
 Chan 45

SEAL BEACH
 115.7 SLI 
 Chan 104



TAKEOFF MINIMUMS
 Rwy 6L/R, 7L/R: NA-Operational.
 Rwy 24L/R, 25L/R: Standard.

**TURN MANDATORY FOR
ATC SEPARATION**

South complex turn at SMO R-160 to 221° is required for ATC separation.

NOTE: DME and RADAR required.
 NOTE: Chart not to scale.

SW-3, 05 SEP 2024 to 03 OCT 2024

SW-3, 05 SEP 2024 to 03 OCT 2024



DEPARTURE ROUTE DESCRIPTION

TAKEOFF RUNWAYS 24L/R: Climb on heading 251° to cross SMO VOR/DME R-160 at or below 3000, thence. . . .

TAKEOFF RUNWAYS 25L/R: Climb on heading 251°, at the SMO VOR/DME R-160 turn left heading 221°, cross SMO R-160 at or below 3000, thence. . . .

. . . .on RADAR vectors to cross SLI VORTAC at or above 14000, then on SLI R-022 to cross SEBBY/23 DME FIX at or above 16000. Then on DAG R-214 to DAG VORTAC. All aircraft expect further clearance to filed flight level five minutes after departure.

LOST COMMUNICATIONS: If not in contact with Departure Control within five minutes after departure, turn left direct SLI VORTAC and proceed on assigned route, climb to FL230 or filed altitude whichever is lower. Aircraft filed FL240 or above climb to filed altitude ten minutes after departure.

SEBBY THREE DEPARTURE

(SEBBY3.DAG) 19JUL18

LOS ANGELES, CALIFORNIA
LOS ANGELES INTL (LAX)