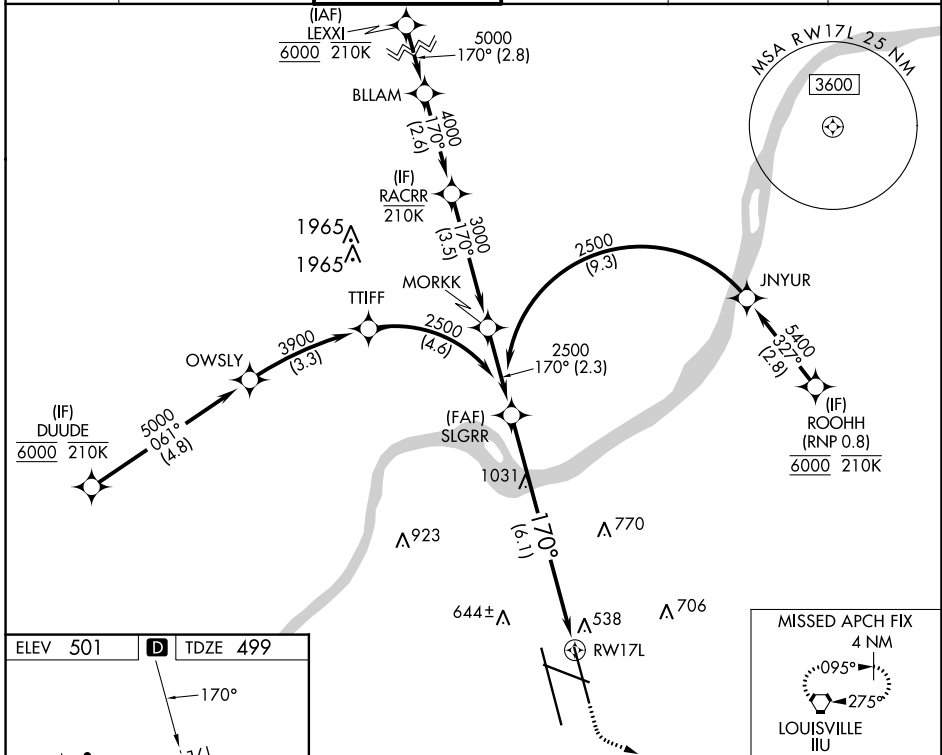


APP CRS	Rwy Idg	7800
170°	TDZE	499
	Apt Elev	501

RNAV (RNP) Z RWY 17L

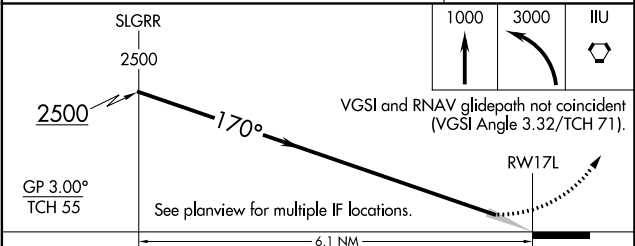
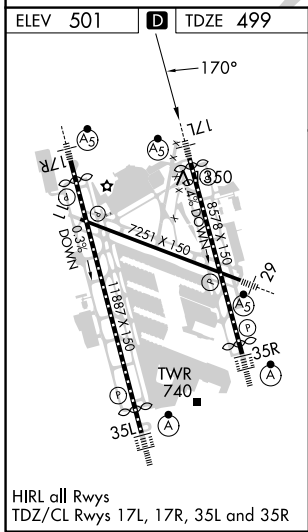
LOUISVILLE MUHAMMAD ALI INTL (SDF)

RNP AR APCH - GPS.		MALSR	MISSED APPROACH: Climb to 1000 then climbing left turn to 3000 direct IIU VORTAC and hold, continue climb-in-hold to 3000.		
<p>▼ For uncompensated Baro-VNAV systems, procedure NA below -13°C or above 54°C. Simultaneous approach authorized.</p>					
D-ATIS	LOUISVILLE APP CON	LOUISVILLE TOWER	GND CON	CLNC DEL	CPDLC
118.725	132.075 327.0	124.2 257.8	121.7 348.6	126.1 275.8	



SE-1, 05 SEP 2024 to 03 OCT 2024

SE-1, 05 SEP 2024 to 03 OCT 2024



CATEGORY	A	B	C	D
RNP 0.30 DA	936/40		437 (500-3/4)	

AUTHORIZATION REQUIRED