

SPILR ONE DEPARTURE (RNAV)

LOUISVILLE, KENTUCKY

TOP ALTITUDE:
13000

RNAV 1 - DME/DME/IRU or GPS.

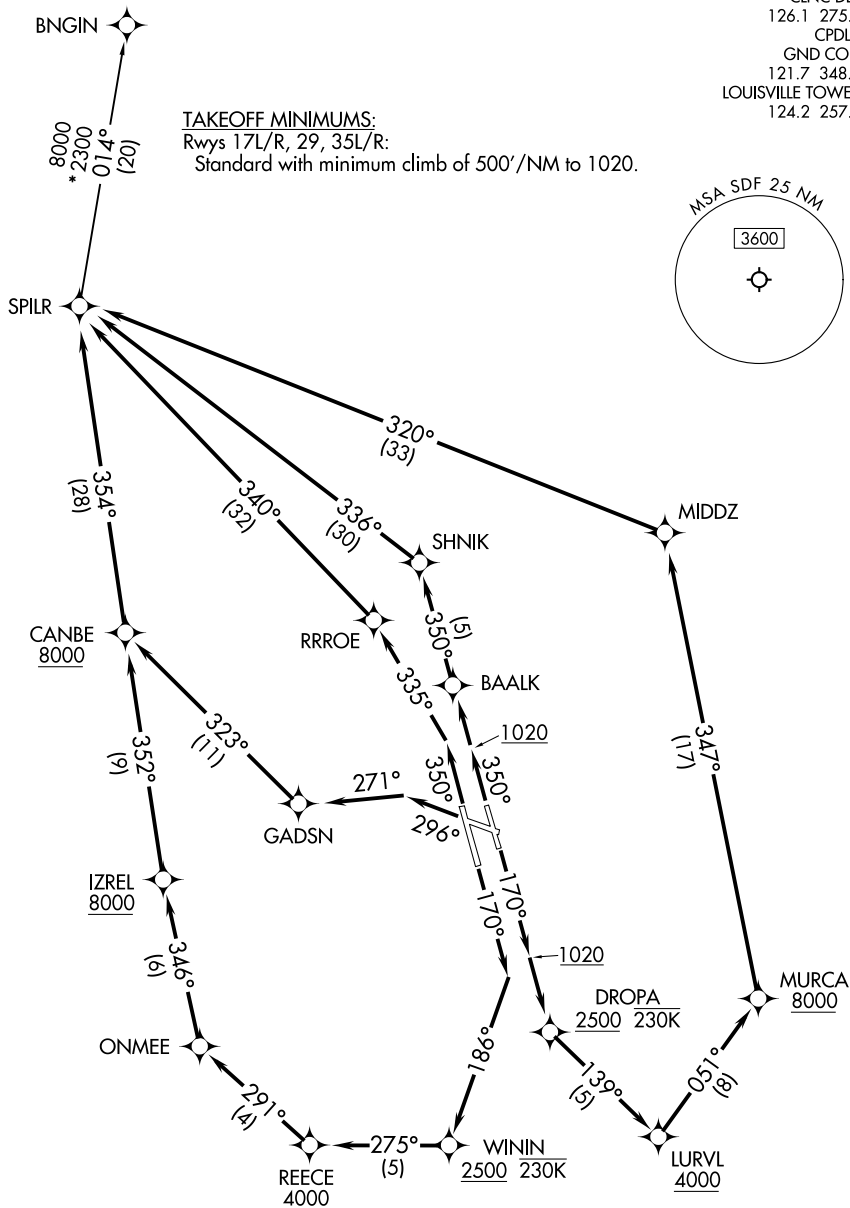
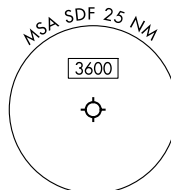
RADAR required for non-GPS equipped aircraft.

LOUISVILLE DEP CON
 132.075 327.0
 D-ATIS 118.725
 CLNC DEL
 126.1 275.8
 CPDLC
 GND CON
 121.7 348.6
 LOUISVILLE TOWER
 124.2 257.8

TAKEOFF MINIMUMS:

Rwys 17L/R, 29, 35L/R:

Standard with minimum climb of 500'/NM to 1020.



(CONTINUED ON FOLLOWING PAGE)

NOTE: Chart not to scale.

SPILR ONE DEPARTURE (RNAV)

LOUISVILLE, KENTUCKY

SE-1, 05 SEP 2024 to 03 OCT 2024

SE-1, 05 SEP 2024 to 03 OCT 2024