

LOC/DME I-MSN 110.1 Chan 38	APP CRS 005°	Rwy Idg TDZE 862 Apt Elev 887	8005
-------------------------------------------------	------------------------	---------------------------------------------------	-------------

ILS RWY 36 (CAT II & III)

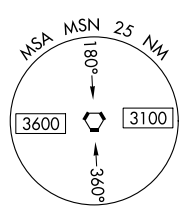
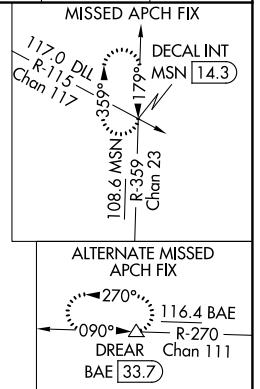
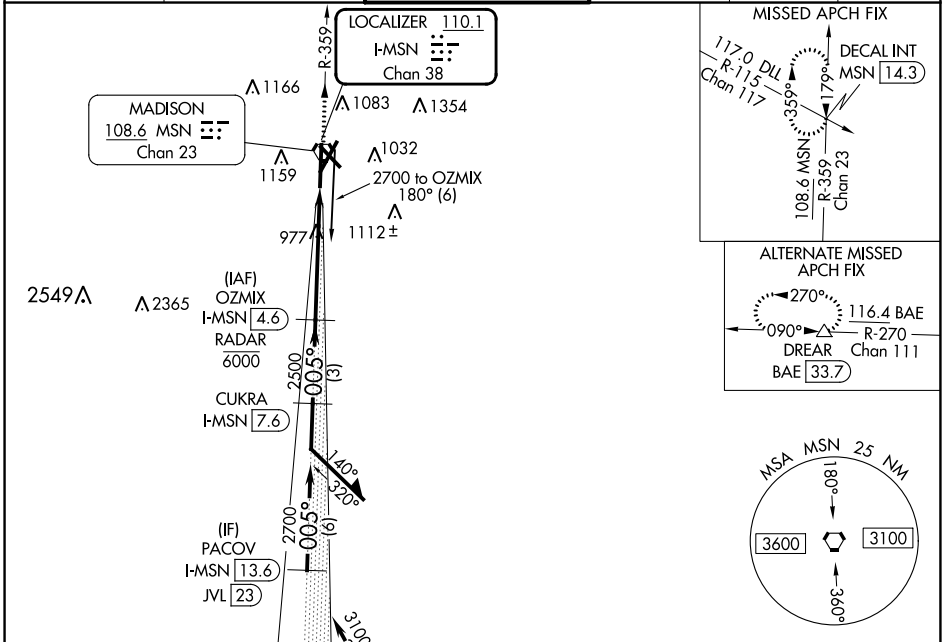
DANE COUNTY RGNL/TRUAX FLD (MSN)

DME or RADAR required.

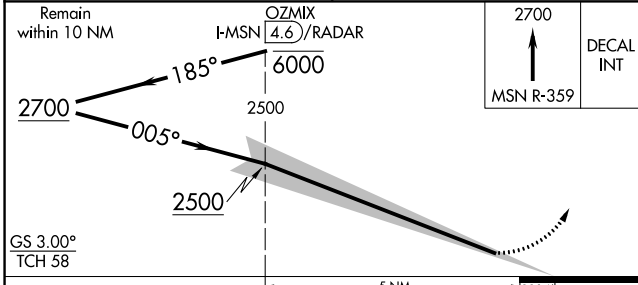
Procedure NA when tower closed. CAT II: RVR 1000 authorized with specific OPSPEC, MSPEC, or LOA approval and use of autoland or HUD to touchdown.

MISSED APPROACH: Climb to 2700 on MSN VORTAC R-359 to DECAL INT/MSN 14.3 DME and hold.

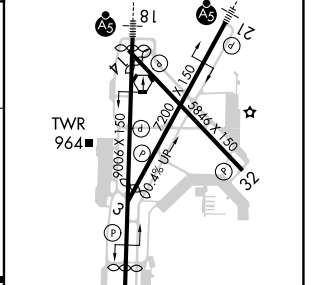
ATIS 124.65 278.3	MADISON APP CON * 135.45 343.7	MADISON TOWER * 119.3 (CTAF) 0 257.8	GND CON 121.9 348.6	CLNC DEL 121.625	UNICOM 122.95
-----------------------------	------------------------------------------	------------------------------------------------	-------------------------------	----------------------------	-------------------------



ELEV 887	TDZE 862
----------	----------



Remain within 10 NM	OZMIX (4.6) / RADAR 6000	2700	DECAL INT
---------------------	--------------------------	------	-----------



GS 3.00°	TCH 58			
CATEGORY	A	B	C	D
S-ILS 36	CAT II RA 109/12 100 DA 962			
S-ILS 36	CAT III RVR 06			

CATEGORY II & III ILS - SPECIAL AIRCREW & AIRCRAFT CERTIFICATION REQUIRED

HIRL all Rwy's
REIL Rwy's 3, 14 and 32

EC-3, 05 SEP 2024 to 03 OCT 2024

EC-3, 05 SEP 2024 to 03 OCT 2024