

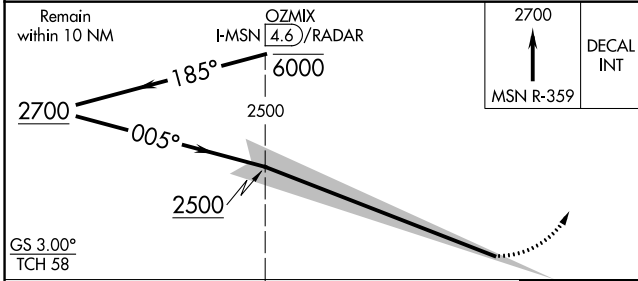
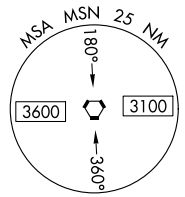
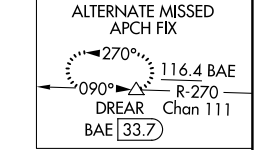
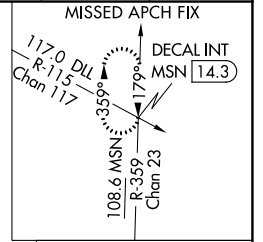
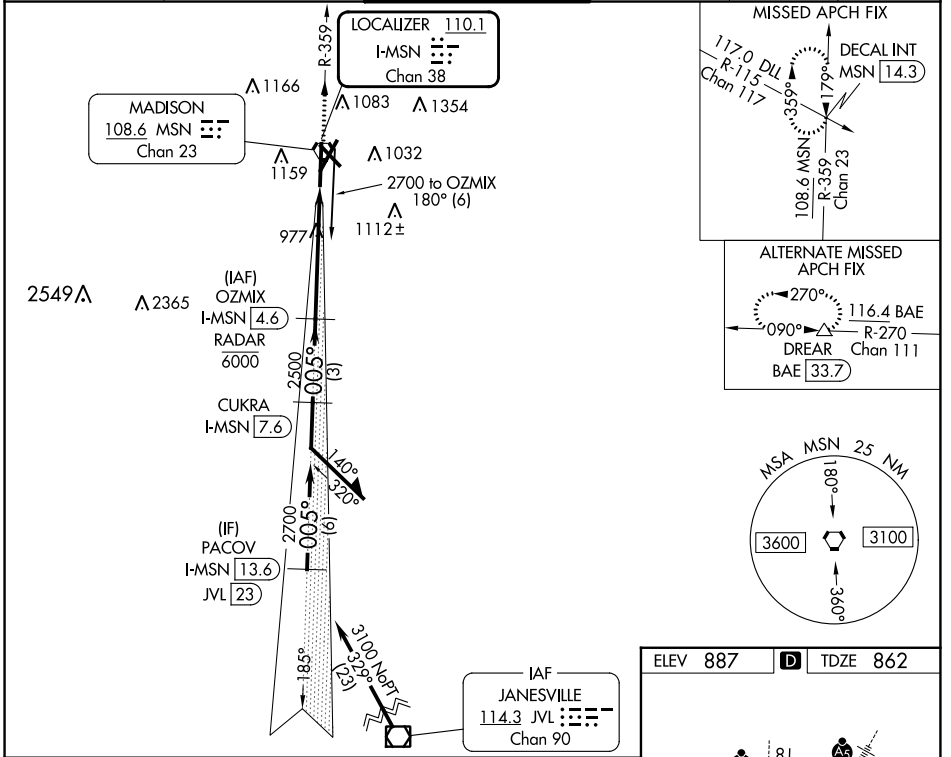
LOC/DME I-MSN 110.1 Chan 38	APP CRS 005°	Rwy Idg 8005 TDZE 862 Apt Elev 887
---	------------------------	--

ILS RWY 36 (SA CAT I)

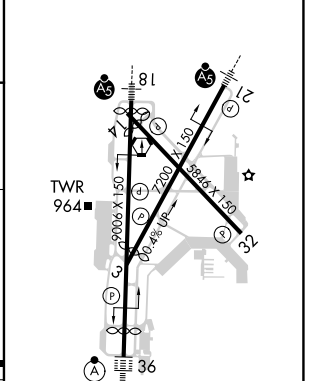
DANE COUNTY RGNL/TRUAX FLD (MSN)

DME or RADAR required.	ALSF-2	MISSED APPROACH: Climb to 2700 on MSN VORTAC R-359 to DECAL INT/MSN 14.3 DME and hold.
⚠ Requires specific OPSPEC, MSPEC, or LOA approval and use of HUD to DH. Procedure NA when tower closed.	Ⓜ	

ATIS 124.65 278.3	MADISON APP CON * 135.45 343.7	MADISON TOWER * 119.3 (CTAF) 0 257.8	GND CON 121.9 348.6	CLNC DEL 121.625	UNICOM 122.95
-----------------------------	--	--	-------------------------------	----------------------------	-------------------------



ELEV 887	D	TDZE 862
----------	----------	----------



CATEGORY	A	B	C	D
S-ILS 36	RA 159/14 150 DA 1012			
SA CATEGORY I ILS - SPECIAL AIRCREW & AIRCRAFT CERTIFICATION REQUIRED				

HIRL all Rwy's
REIL Rwy's 3, 14 and 32

EC-3, 05 SEP 2024 to 03 OCT 2024

EC-3, 05 SEP 2024 to 03 OCT 2024