

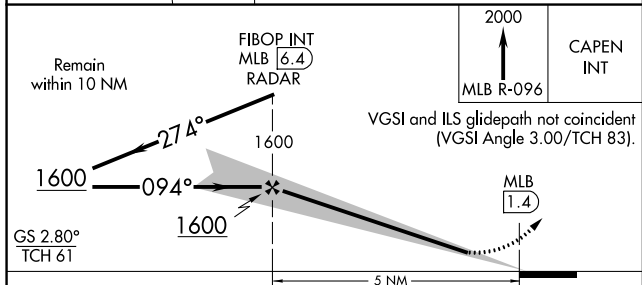
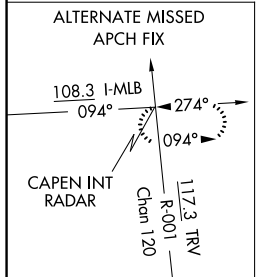
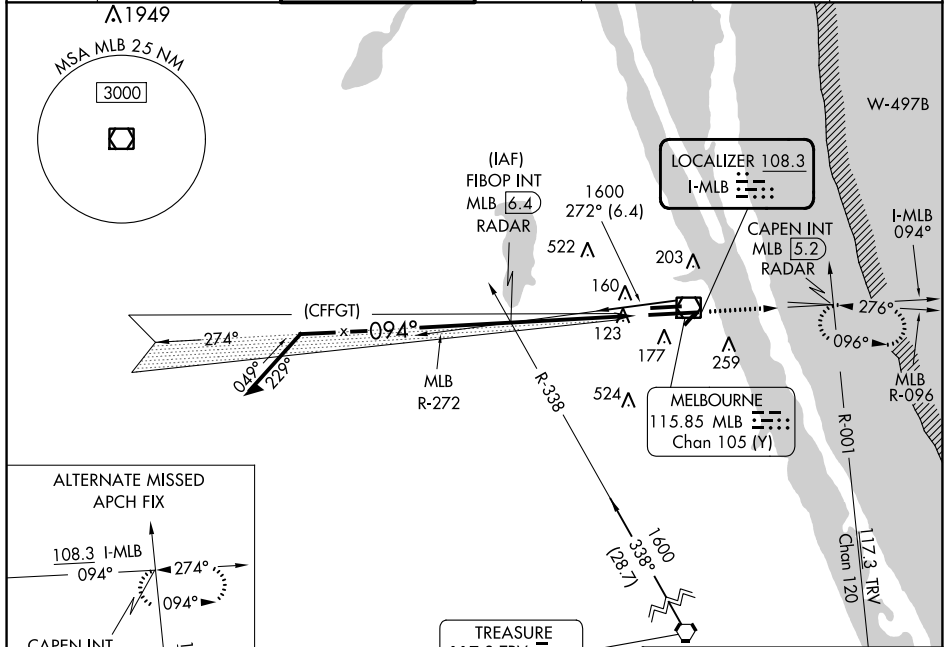
LOC I-MLB <b>108.3</b>	APP CRS <b>094°</b>	Rwy Idg <b>10181</b>
		TDZE <b>32</b>
		Apt Elev <b>33</b>

# ILS or LOC RWY 9R

MELBOURNE ORLANDO INTL (MLB)

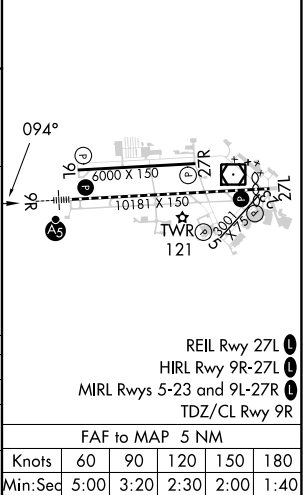
DME or RADAR required.		MALSRR	MISSED APPROACH: Climb to 2000 on MLB VOR/DME R-096 to CAPEN INT/MLB VOR/DME 5.2 DME/RADAR and hold.

ATIS <b>132.55</b>	ORLANDO APP CON <b>132.65 281.425</b>	MELBOURNE TOWER ★ <b>118.2 (CTAF) 257.8</b>	GND CON <b>121.9</b>	CLNC DEL <b>121.9</b>	CLNC DEL <b>132.65</b> (When twr closed)	UNICOM <b>122.95</b>
-----------------------	--	--	-------------------------	--------------------------	--	-------------------------



CATEGORY	A	B	C	D
	S-ILS 9R	232/18		200 (200-½)
S-LOC 9R	420/24	388 (400-½)	420/35	388 (400-⅝)
CIRCLING	500-1	560-1	680-1¾	880-2¾
	467 (500-1)	527 (600-1)	647 (700-1¾)	847 (900-2¾)

ELEV 33	TDZE 32
---------	---------



SE-3, 05 SEP 2024 to 03 OCT 2024

SE-3, 05 SEP 2024 to 03 OCT 2024