

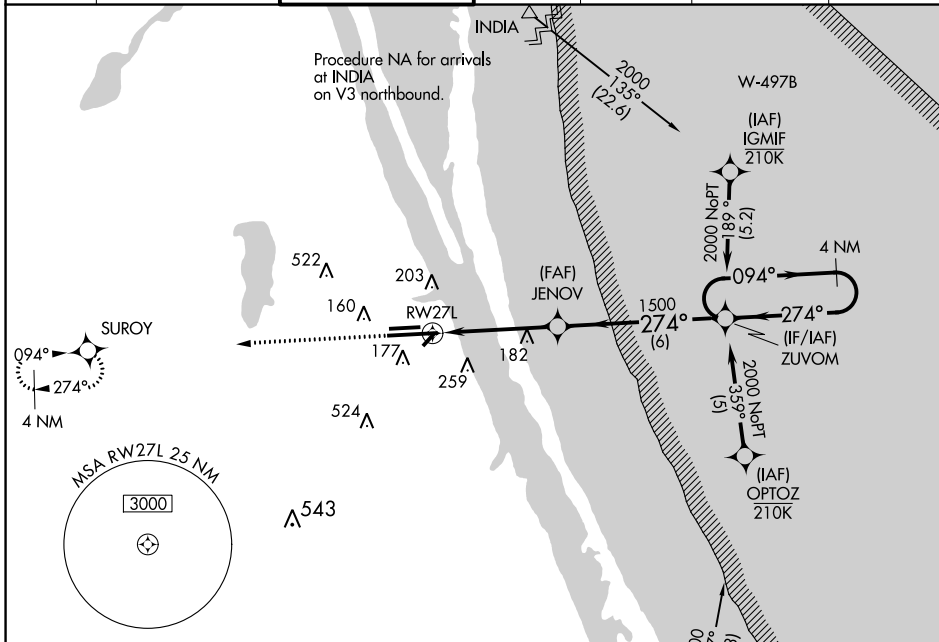
WAAS CH <b>56201</b> <b>W27B</b>	APP CRS <b>274°</b>	Rwy Idg TDZE Apt Elev	<b>9482</b> <b>26</b> <b>33</b>
--	------------------------	-----------------------------	---------------------------------------

# RNAV (GPS) RWY 27L

MELBOURNE ORLANDO INTL (MLB)

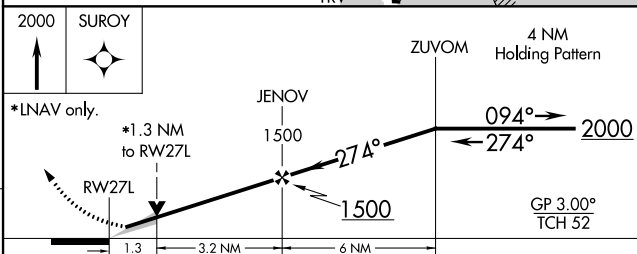
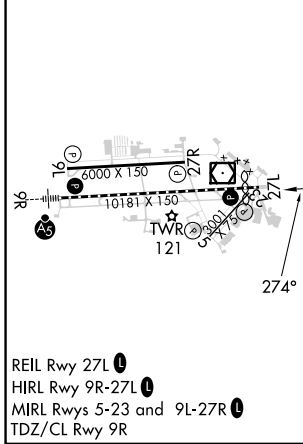
RNP APCH.		MISSED APPROACH: Climb to 2000 direct SUROY and hold.			
▼ For uncompensated Baro-VNAV systems, LNAV/VNAV NA below -1.5°C (5°F) or above 54°F (130°F).					

ATIS <b>132.55</b>	ORLANDO APP CON <b>132.65 281.425</b>	MELBOURNE TOWER ★ <b>118.2(CTAF) 257.8</b>	GND CON <b>121.9</b>	CLNC DEL <b>121.9</b>	CLNC DEL <b>132.65</b> (When twr closed)	UNICOM <b>122.95</b>
-----------------------	--	---	-------------------------	--------------------------	--	-------------------------



ELEV 33	<b>D</b>	TDZE 26
---------	----------	---------

Procedure NA for arrivals on TRV VORTAC airway radials 325 CW 350.



CATEGORY	A	B	C	D
LPV DA		226-3/4	200 (200-3/4)	
LNAV/VNAV DA		318-7/8	292 (300-7/8)	
LNAV MDA	500-1	474 (500-1)	500-1 3/8	474 (500-1 3/8)
<b>C</b> CIRCLING	500-1 467 (500-1)	560-1 527 (600-1)	680-1 3/4 647 (700-1 3/4)	880-2 3/4 847 (900-2 3/4)

SE-3, 05 SEP 2024 to 03 OCT 2024

SE-3, 05 SEP 2024 to 03 OCT 2024