

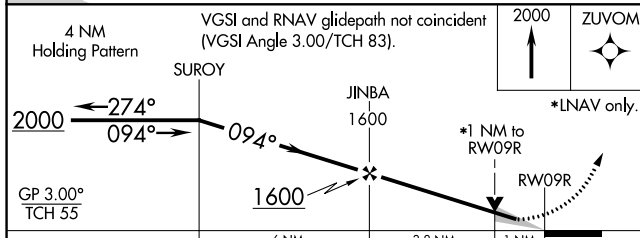
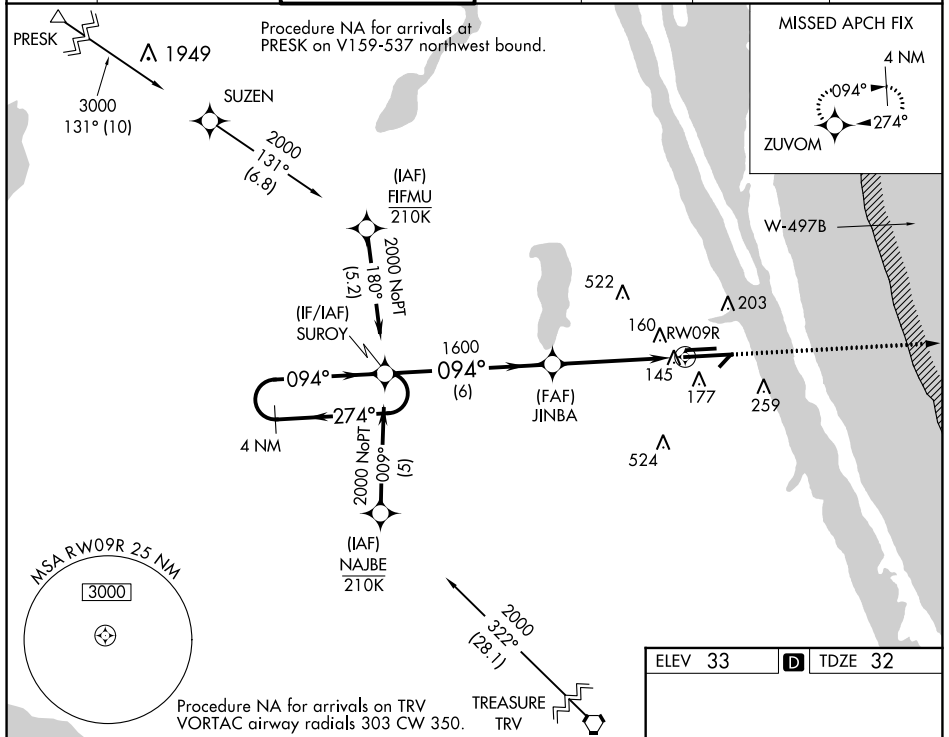
WAAS CH <b>60901</b> <b>W09B</b>	APP CRS <b>094°</b>	Rwy Idg <b>10181</b> TDZE <b>32</b> Apt Elev <b>33</b>
--	------------------------	--

# RNAV (GPS) RWY 9R

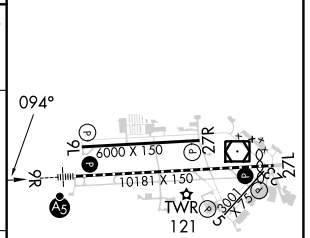
MELBOURNE ORLANDO INTL (MLB)

RNP APCH.		MALSR		MISSED APPROACH: Climb to 2000 direct ZUVOM and hold.	
<p>For uncompensated Baro-VNAV systems, LNAV/VNAV NA below -15°C or above 54°C.</p>					

ATIS <b>132.55</b>	ORLANDO APP CON <b>132.65 281.425</b>	MELBOURNE TOWER * <b>118.2</b> (CTAF) <b>257.8</b>	GND CON <b>121.9</b>	CLNC DEL <b>121.9</b>	CLNC DEL <b>132.65</b> (When twr closed)	UNICOM <b>122.95</b>
-----------------------	--	---	-------------------------	--------------------------	--	-------------------------



ELEV 33	TDZE 32
---------	---------



CATEGORY	A	B	C	D
LPV DA	232/18		200 (200-½)	
LNAV/VNAV DA	427/40		395 (400-¾)	
LNAV MDA	420/24 388 (400-½)		420/35 388 (400-⅝)	
CIRCLING	500-1 467 (500-1)	560-1 527 (600-1)	680-1¾ 647 (700-1¾)	880-2¾ 847 (900-2¾)

REIL Rwy 27L	1
HIRL Rwy 9R-27L	1
MIRL Rwys 5-23 and 9L-27R	1
TDZ/CL Rwy 9R	1

SE-3, 05 SEP 2024 to 03 OCT 2024

SE-3, 05 SEP 2024 to 03 OCT 2024