

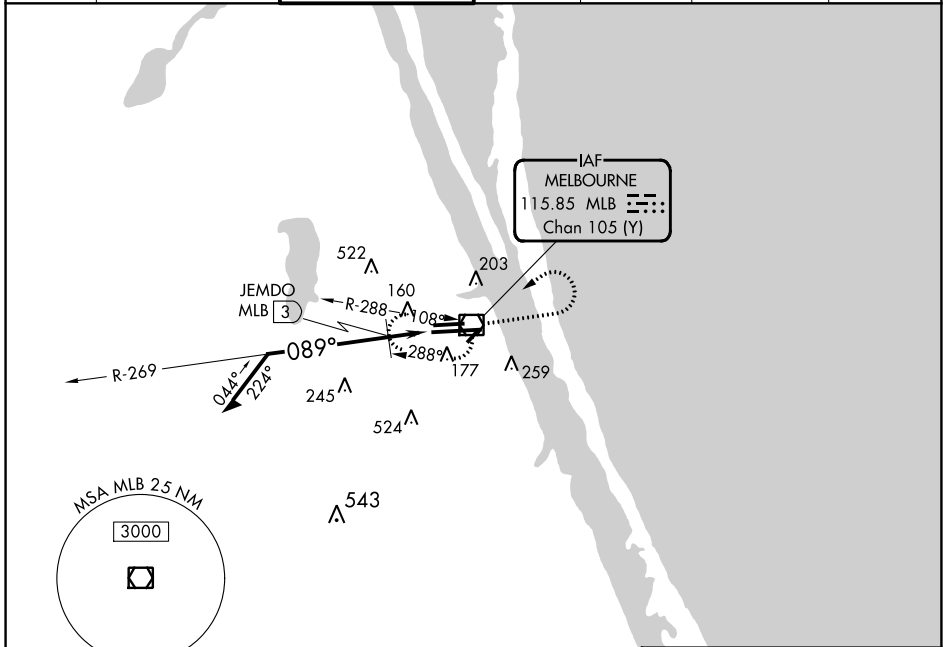
VOR/DME MLB	APP CRS	Rwy Idg	10181
115.85	089°	TDZE	32
Chan 105 (Y)		Apt Elev	33

VOR RWY 9R

MELBOURNE ORLANDO INTL (MLB)

<p>▼ JEMDO FIX minimums: For inop MALSRL, ▲ increase S-9R Cats C and D visibility to RVR 6000.</p>	<p>MALSRL</p>	<p>MISSED APPROACH: Climb to 1000, then climbing left turn to 2100 direct MLB VOR/DME and hold, continue climb-in-hold to 2100.</p>
--	---------------	---

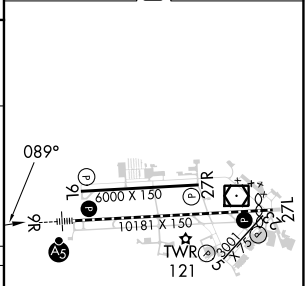
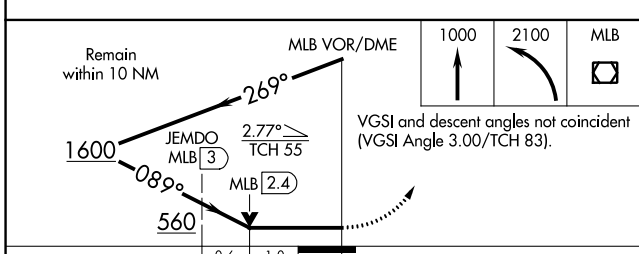
ATIS	ORLANDO APP CON	MELBOURNE TOWER ★	GND CON	CLNC DEL	CLNC DEL	UNICOM
132.55	132.65 281.425	118.2 (CTAF) 257.8	121.9	121.9	132.65 (When twr closed)	122.95



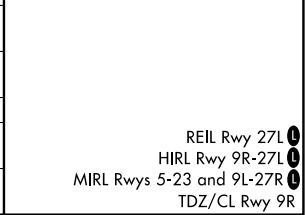
SE-3, 05 SEP 2024 to 03 OCT 2024

SE-3, 05 SEP 2024 to 03 OCT 2024

ELEV 33	D	TDZE 32
---------	---	---------



CATEGORY	A	B	C	D
S-9R	560/24	528 (600-½)	560/55	528 (600-1)
C CIRCLING	560-1	527 (600-1)	680-1¾ 647 (700-1¾)	880-2¾ 847 (900-2¾)
JEMDO FIX MINIMUMS				
S-9R	440/24	408 (500-½)	440/40	408 (500-¾)
C CIRCLING	560-1	527 (600-1)	680-1¾ 647 (700-1¾)	880-2¾ 847 (900-2¾)



- REIL Rwy 27L **0**
- HIRL Rwy 9R-27L **0**
- MIRL Rws 5-23 and 9L-27R **0**
- TDZ/CL Rwy 9R **0**