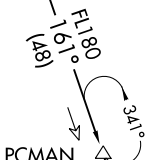


ANNEY FOUR ARRIVAL

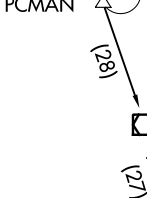
MIAMI, FLORIDA

MIAMI APP CON
 125.75 322.3
 KHST ATIS ★
 132.275 269.9
 MIA D-ATIS
 119.15
 TMB ATIS
 124.0

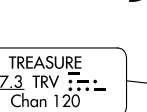
ORMOND BEACH
 112.6 OMN
 Chan 73



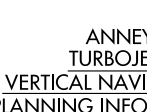
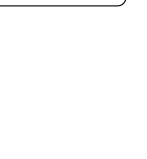
MELBOURNE
 115.85 MLB
 Chan 105 (Y)



TREASURE
 117.3 TRV
 Chan 120



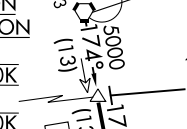
PHORD
 TURBOJET
 VERTICAL NAVIGATION
 PLANNING INFORMATION
 Expect FL240



PALM BEACH
 115.7 PBI
 Chan 104

FREEPORT
 113.2 ZFP
 Chan 79

ANNEY
 TURBOJET
 VERTICAL NAVIGATION
 PLANNING INFORMATION
 KMIA Landing East:
 Expect 13000 and 280K
 KMIA Landing West:
 Expect 11000 and 250K

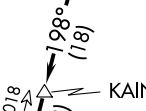


10000
 269°
 (33)
 SNSBK

NOTE: DME required.
 NOTE: RADAR required
 NOTE: Turbojets and Turboprops only.

HILEY

KAINS



VIRGINIA KEY
 117.1 VKZ
 Chan 118

MIAMI
 INTL

MIAMI
 EXEC

HOMESTEAD ARB

MIAMI
 HOMESTEAD
 GENERAL
 AVIATION

OCEAN REEF CLUB
 (Pvt)

(CONTINUED ON FOLLOWING PAGE)

NOTE: Chart not to scale.

SE-3, 05 SEP 2024 to 03 OCT 2024

SE-3, 05 SEP 2024 to 03 OCT 2024

ANNEY FOUR ARRIVAL

MIAMI, FLORIDA