

(BNGOS4.BNGOS) 24081

AL-257 (FAA)

MIAMI INTL (MIA)
MIAMI, FLORIDA

BNGOS FOUR DEPARTURE(RNAV) Departure Routes

MIAMI DEP CON
119.45 290.325
D-AIIS
133.675
CLINC DEL
135.35
CPDIC
GND CON
(Rwys 8L/R, 12, 26L/R)
121.8 348.6
(Rwys 9, 27, 30)
127.5 348.6
MIAMI TOWER
118.3 256.9

TOP ALTITUDE:
5000

RNAV-1 DME/DME/IRU or GPS.
RADAR required.

TAKEOFF MINIMUMS

Rwy 8L: Standard with minimum climb of 500'/NM to 520, then minimum climb of 215'/NM to 1400.
Rwy 8R: Standard with minimum climb of 500'/NM to 520, then minimum climb of 235'/NM to 1400.
Rwy 9: Standard with minimum climb of 500'/NM to 520, then minimum climb of 240'/NM to 1400.
Rwy 12: Standard with minimum climb of 500'/NM to 520, then minimum climb of 230'/NM to 1400.
Rwys 26L/R, 27, 30: Standard with minimum climb of 500' per NM to 520.

BNGOS
See following page for transition routes.

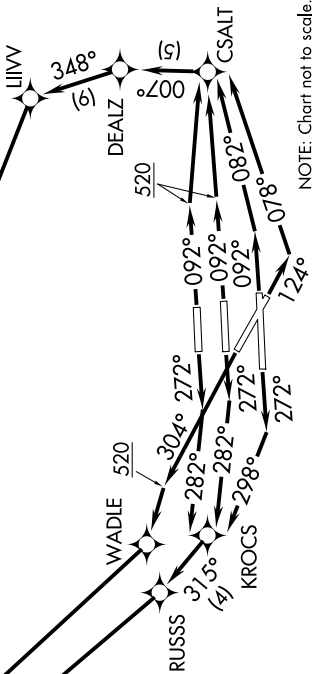
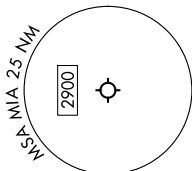
322°
(12)
MRENO
5000

312°
(23)

325°
(40)

323°
(41)

297°
(23)



NOTE: Chart not to scale.

NOTE: Jet aircraft only.
NOTE: Accelerate to 250K until leaving 10000, if unable, advise ATC.
NOTE: MERKS Transition ATC assigned only except aircraft landing: MKY, RSW, APF, PGD and FMY.

(CONTINUED ON FOLLOWING PAGE)

SE-3, 05 SEP 2024 to 03 OCT 2024

SE-3, 05 SEP 2024 to 03 OCT 2024

BNGOS FOUR DEPARTURE(RNAV) Departure Routes

(BNGOS4.BNGOS) 21MAR24

MIAMI, FLORIDA
MIAMI INTL (MIA)