

FOLZZ THREE DEPARTURE (RNAV) Departure Routes

SE-3, 05 SEP 2024 to 03 OCT 2024

RNAV-1 DME/DME/IRU or GPS.
SNAGY and SUMRS Transitions: RNAV 1-GPS.

RADAR required.

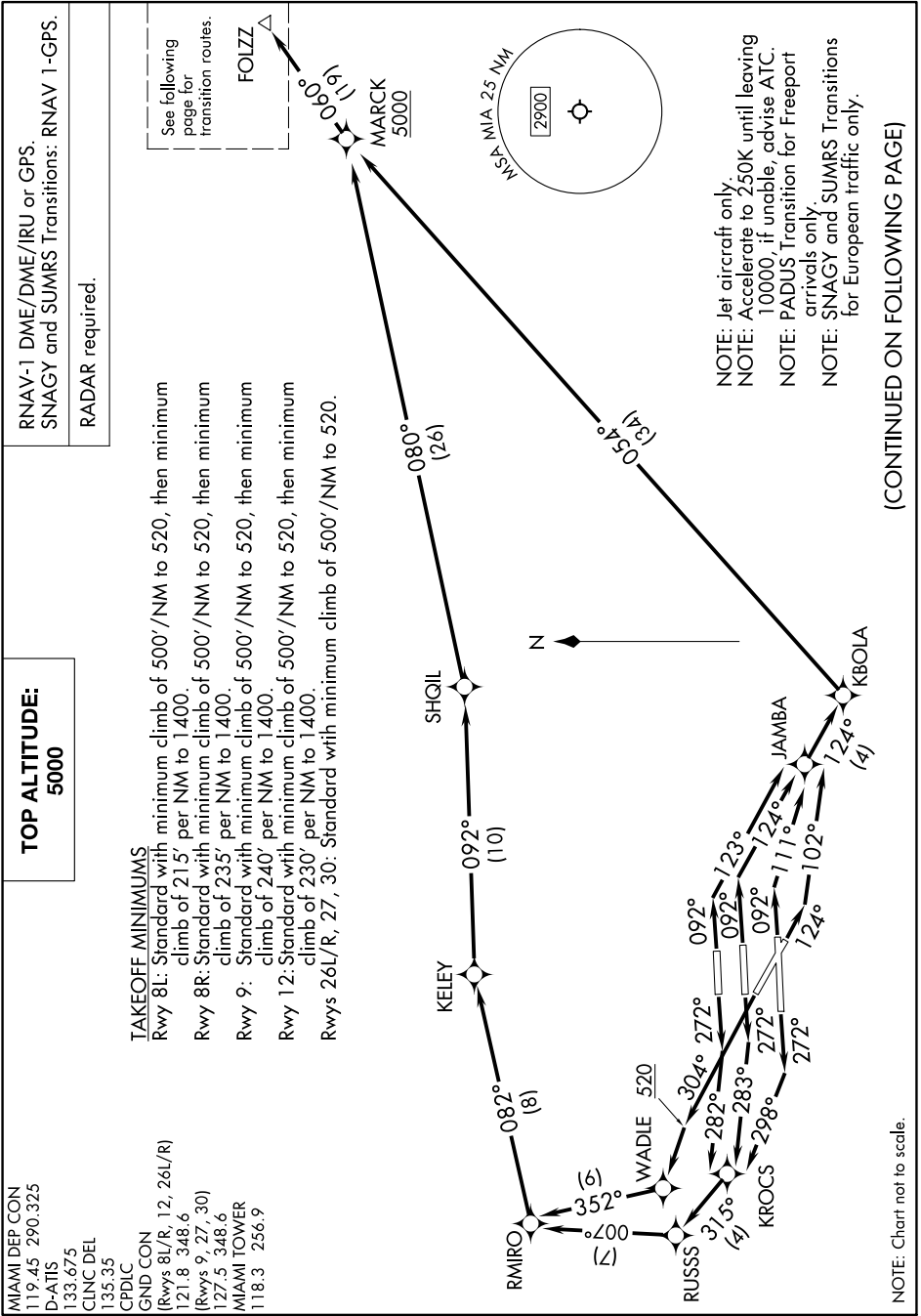
TOP ALTITUDE:
5000

TAKEOFF MINIMUMS

- Rwy 8L: Standard with minimum climb of 500'/NM to 520, then minimum climb of 215' per NM to 1400.
- Rwy 8R: Standard with minimum climb of 500'/NM to 520, then minimum climb of 235' per NM to 1400.
- Rwy 9: Standard with minimum climb of 500'/NM to 520, then minimum climb of 240' per NM to 1400.
- Rwy 12: Standard with minimum climb of 500'/NM to 520, then minimum climb of 230' per NM to 1400.
- Rwys 26L/R, 27, 30: Standard with minimum climb of 500'/NM to 520.

- MIAMI DEP CON
119.45 290.325
- D-ATIS
133.675
- CLNC DEL
135.35
- CPDLC
- GND CON
(Rwys 8L/R, 12, 26L/R)
121.8 348.6
- (Rwys 9, 27, 30)
127.5 348.6
- MIAMI TOWER
118.3 256.9

See following page for transition routes.
FOLZZ



- NOTE: Jet aircraft only.
- NOTE: Accelerate to 250K until leaving 10000, if unable, advise ATC.
- NOTE: PADUS Transition for Freeport arrivals only.
- NOTE: SNAGY and SUMRS Transitions for European traffic only.

(CONTINUED ON FOLLOWING PAGE)

NOTE: Chart not to scale.

FOLZZ THREE DEPARTURE (RNAV) Departure Routes

SE-3, 05 SEP 2024 to 03 OCT 2024