

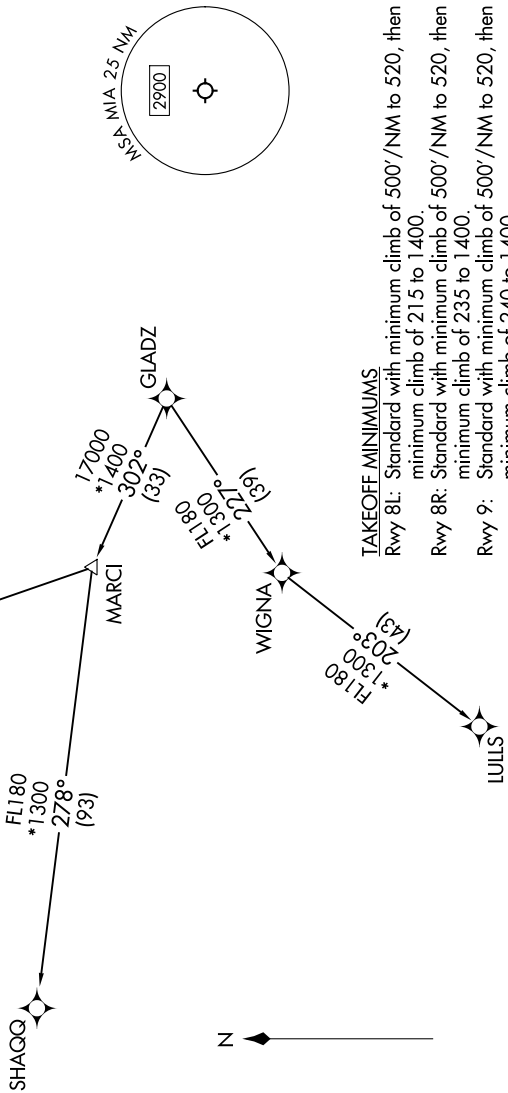
GLADZ THREE DEPARTURE (RNAV) Transition Routes

SE-3, 05 SEP 2024 to 03 OCT 2024

TOP ALTITUDE: 5000	RNAV-1 DME/DME/IRU or GPS. RADAR required.
-------------------------------------	---

MIAMI DEP CON
119.45 290.325 (Departing East)
125.5 354.1 (Departing West)
D-ATIS
133.675
CLNC DEL
135.35
CPDLC
GND CON
(Rvys 8L/R, 12, 26L/R) 121.8 348.6
(Rvys 9, 27, 30) 127.5 348.6
MIAMI TOWER
118.3 256.9

NOTE: Jet aircraft only.
NOTE: Accelerate to 250K until leaving 10000, if unable, advise ATC.
NOTE: SHAGG and BAGGS transitions ATC assigned except aircraft departing MIA.



TAKEOFF MINIMUMS
Rwy 8L: Standard with minimum climb of 500'/NM to 520, then minimum climb of 215 to 1400.
Rwy 8R: Standard with minimum climb of 500'/NM to 520, then minimum climb of 235 to 1400.
Rwy 9: Standard with minimum climb of 500'/NM to 520, then minimum climb of 240 to 1400.
Rwy 12: Standard with minimum climb of 500'/NM to 520, then minimum climb of 230 to 1400.
Rvys 26L/R, 27, 30: Standard with minimum climb of 500'/NM to 520.

NOTE: Chart not to scale.

(CONTINUED ON FOLLOWING PAGE)

SE-3, 05 SEP 2024 to 03 OCT 2024