

LOC/DME I-VIN <b>109.1</b> Chan 28	APP CRS <b>272°</b>	Rwy Idg <b>10220</b> TDZE <b>9</b> Apt Elev <b>9</b>
--	------------------------	--

# ILS or LOC RWY 26L

MIAMI INTL (MIA)

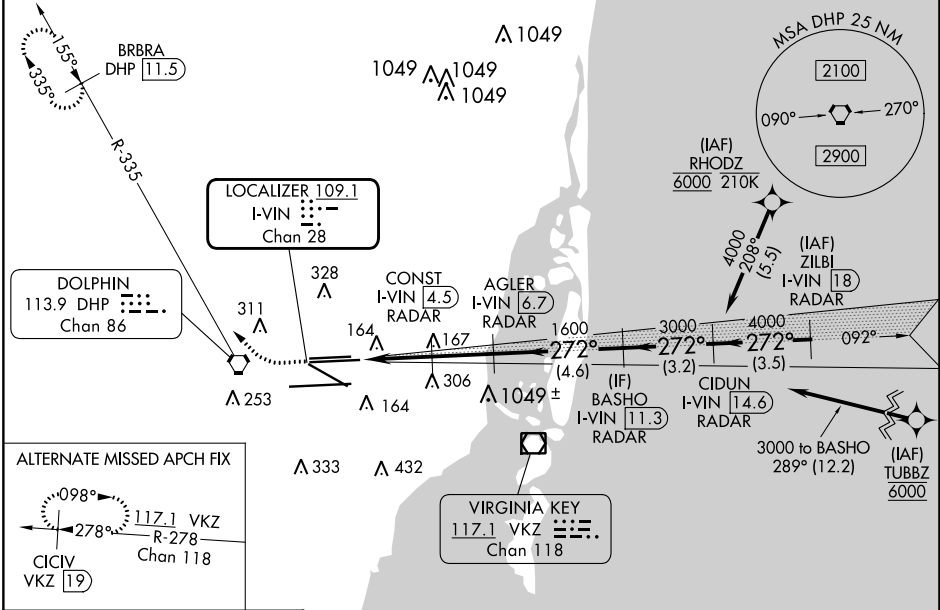
DME required. RNP APCH-GPS. From RHODZ, TUBBZ.



MISSED APPROACH: Climb to 800 then climbing right turn to 4000 on heading 290° and DHP VORTAC R-335 to BRBRA/DHP 11.5 DME and hold, continue climb-in-hold to 4000.

Simultaneous approach authorized. Inop table does not apply to S-ILS 26L all Cats. For inop ALS, increase S-LOC 26L Cats C/D visibility to RVR 6000.

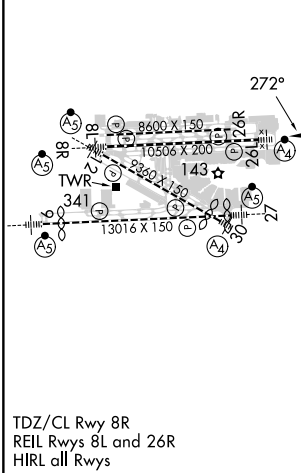
D-ATIS ARR <b>119.15</b> DEP <b>133.675</b>	MIAMI APP CON <b>124.85 322.3</b>	MIAMI TOWER <b>118.3 256.9</b>	GND CON <b>121.8</b> (Rwys 8L/R, 12, 26L/R) <b>127.5</b> (Rwys 9, 27, 30)	<b>348.6</b>	CINC DEL <b>135.35</b>	CPDLC
---	--------------------------------------	-----------------------------------	---	--------------	---------------------------	-------



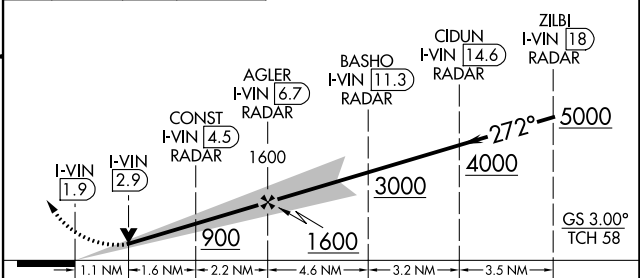
SE-3, 05 SEP 2024 to 03 OCT 2024

SE-3, 05 SEP 2024 to 03 OCT 2024

ELEV 9	<b>D</b>	TDZE 9
--------	----------	--------



800	4000	DHP R-335	BRBRA DHP 11.5	VGSI and ILS glidepath not coincident (VGSI Angle 3.00/TCH 73).
-----	------	-----------	----------------	---



CATEGORY	A	B	C	D
S-ILS 26L	209/40 200 (200-¾)			
S-LOC 26L	420/40	411 (500-¾)	420/50	411 (500-1)