

MIAMI, FLORIDA

AL-257 (FAA)

24137

WAAS CH 86903 W26A	APP CRS 272°	Rwy Idg 8600 TDZE 9 Apt Elev 9
--	------------------------	---

RNAV (GPS) RWY 26R

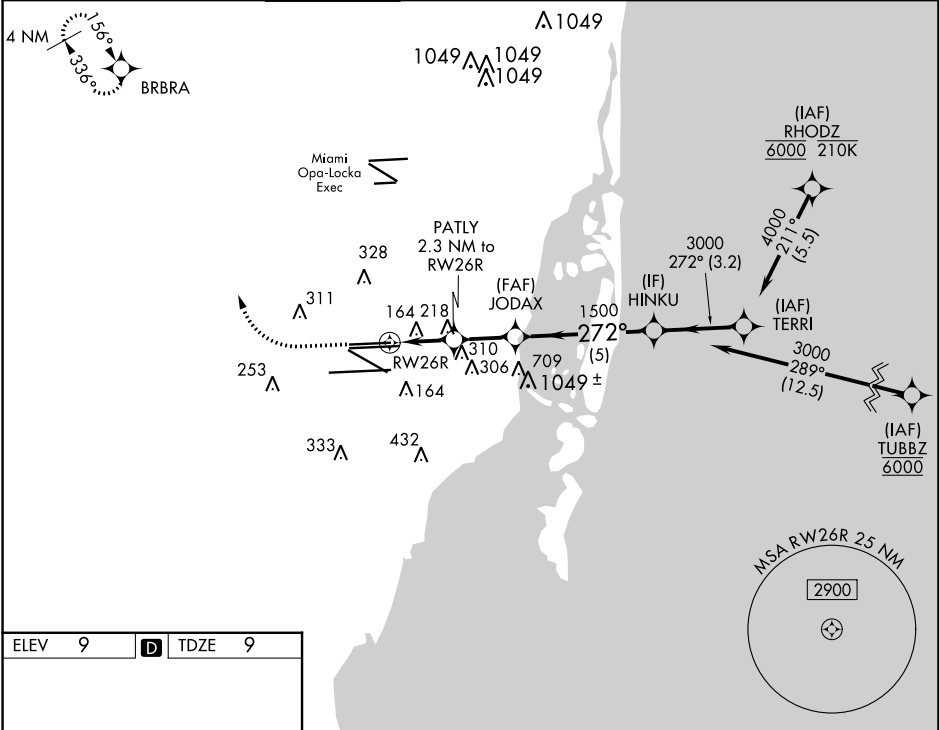
MIAMI INTL (MIA)

RNP APCH - GPS.

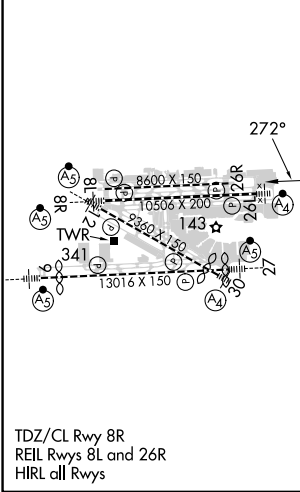
MISSED APPROACH: Climb to 800 then climbing right turn to 4000 direct BRBRA and hold, continue climb-in-hold to 4000.

Simultaneous approach authorized. LNAV procedure NA during simultaneous operations. Use of FD or AP required during simultaneous operations. For uncompensated Baro-VNAV systems, LNAV/VNAV NA below 9°C or above 54°C.

D-ATIS ARR 119.15 DEP 133.675	MIAMI APP CON 124.85 322.3	MIAMI TOWER 118.3 256.9	GND CON 121.8 (Rwys 8L/R, 12, 26L/R) 127.5 (Rwys 9, 27, 30)	348.6	CLNC DEL 135.35	CPDLC
---	--------------------------------------	-----------------------------------	---	--------------	---------------------------	-------



ELEV 9	D	TDZE 9
--------	----------	--------



TDZ/CL Rwy 8R
REIL Rwys 8L and 26R
HIRL all Rwys

800	4000	BRBRA				
		PATLY 2.3 NM to RWY 26R	JODAX 1500	HINKU 3000	TERRI 4000	
		1.3 NM to RWY 26R	2.2 NM	5 NM	3.2 NM	
GP 3.00° TCH 60						
CATEGORY	A	B	C	D		
LPV DA	265-3/4		256 (300-3/4)			
LNAV/VNAV DA	432-1 1/4		423 (500-1 1/4)			
LNAV MDA	480-1	471 (500-1)	480-1 3/8	471 (500-1 3/8)		

SE-3, 05 SEP 2024 to 03 OCT 2024

SE-3, 05 SEP 2024 to 03 OCT 2024

MIAMI, FLORIDA
Amdt 5 14JUL22

25°48'N-80°17'W

RNAV (GPS) RWY 26R

MIAMI INTL (MIA)