

MIAMI, FLORIDA

AL-257 (FAA)

24137

WAAS CH 40205 W27A	APP CRS 272°	Rwy Idg 12755 TDZE 9 Apt Elev 9
--	------------------------	--

RNAV (GPS) Y RWY 27

MIAMI INTL (MIA)

RNP APCH-GPS.

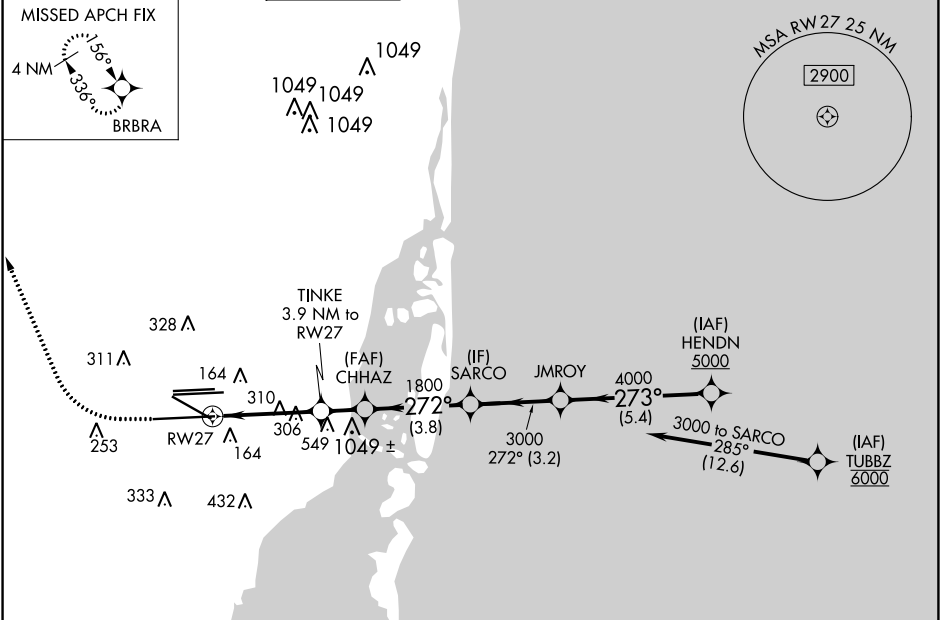
Simultaneous approach authorized. LNAV procedure NA during simultaneous operations. Use of FD or AP required during simultaneous operations. For uncompensated Baro-VNAV systems, LNAV/VNAV NA below 8°C or above 54°C. *RVR 1800 authorized with use of FD or AP or HUD to DA.

MALSR



MISSED APPROACH: Climb to 800 then climbing right turn to 4000 direct BRBRA and hold, continue climb-in-hold to 4000.

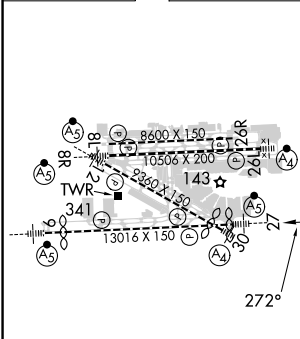
D-ATIS ARR 119.15 DEP 133.675	MIAMI APP CON 124.85 322.3	MIAMI TOWER 118.3 256.9	GND CON 121.8 (8L/8R/12/26L/26R) 127.5 (9/27/30)	348.6	CLNC DEL 135.35	CPDLC
---	--------------------------------------	-----------------------------------	--	--------------	---------------------------	-------



SE-3, 05 SEP 2024 to 03 OCT 2024

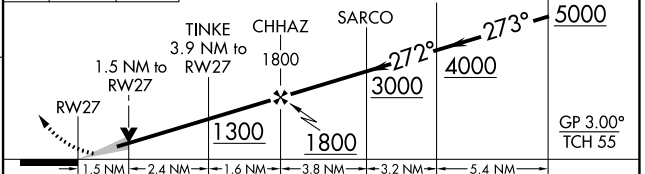
SE-3, 05 SEP 2024 to 03 OCT 2024

ELEV 9	D	TDZE 9
--------	----------	--------



TDZ/CL Rwy 8R
REIL Rwy 8L and 26R
HIRL all Rwy

800 4000 BRBRA VGSi and RNAV glidepath not coincident (VGSi Angle 3.00°/TCH 71).



CATEGORY	A	B	C	D
LPV DA*	209/24		200 (200-½)	
LNAV/VNAV DA	439/40		430 (500-¾)	
LNAV MDA	560/24	551 (600-½)	560/60	551 (600-¼)

MIAMI, FLORIDA
Amdt 4 12AUG21

25°48'N-80°17'W

RNAV (GPS) Y RWY 27

MIAMI INTL (MIA)