

MIAMI, FLORIDA

AL-257 (FAA)

24137

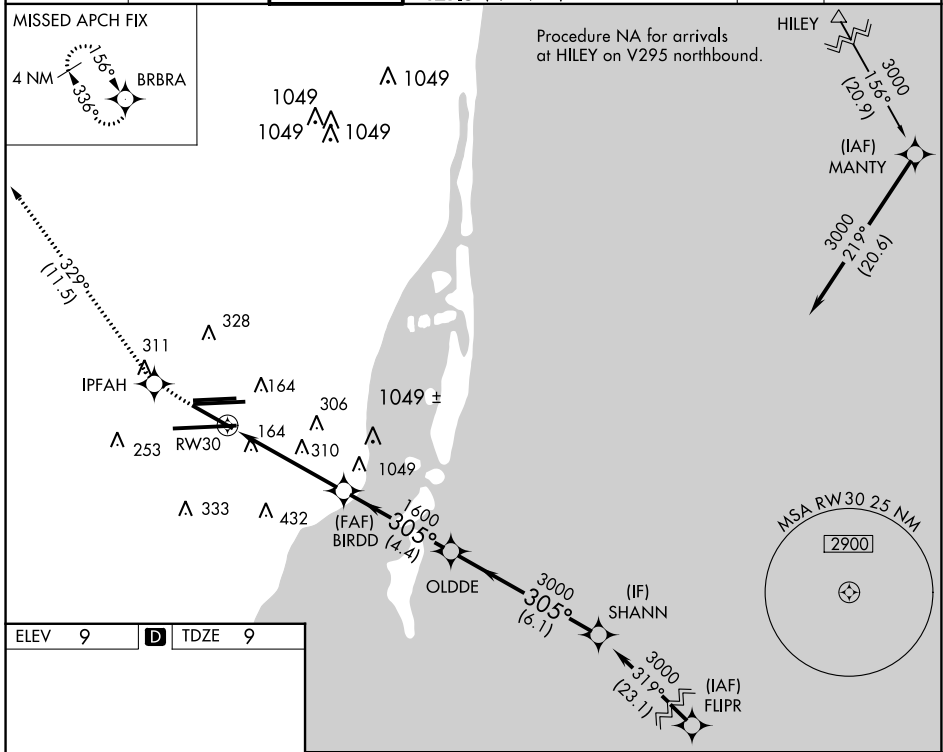
WAAS CH 40105 W30A	APP CRS 305°	Rwy Idg TDZE Apt Elev	7913 9 9
---------------------------------	------------------------	-----------------------------	-------------------------------------

RNAV (GPS) Z RWY 30

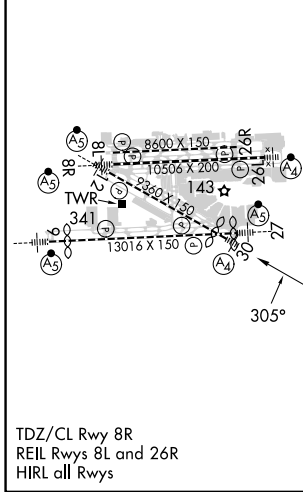
MIAMI INTL (MIA)

RNP APCH - GPS.	MALS	MISSED APPROACH: Climb to 3000 direct IPFAH and on 329° track to BRBRA and hold.
▽ Inop table does not apply to LNAV Cat C and D. For inop ALS, increase LPV all Cats visibility to RVR 4500.	(A)	

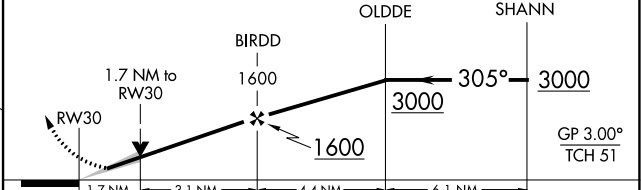
D-ATIS ARR 119.15 DEP 133.675	MIAMI APP CON 124.85 322.3	MIAMI TOWER 118.3 256.9	121.8 (8L/8R/12/26L/26R) 127.5 (9/27/30)	GND CON 348.6	CLNC DEL 135.35	CPDLC
---	--------------------------------------	-----------------------------------	---	-------------------------	---------------------------	-------



ELEV 9	D	TDZE 9
---------------	----------	---------------



3000	IPFAH	tr 329°	BRBRA	VGSI and RNAV glidepath not coincident (VGSI Angle 3.00/TCH 71).
------	-------	---------	-------	--



CATEGORY	A	B	C	D
LPV DA		286/40	277 (300-¾)	
LNAV MDA	620/40	611 (700-¾)	620-1½	611 (700-1½)

MIAMI, FLORIDA
Amdt 1A 23MAR23

25°48'N-80°17'W

RNAV (GPS) Z RWY 30

MIAMI INTL (MIA)

SE-3, 05 SEP 2024 to 03 OCT 2024

SE-3, 05 SEP 2024 to 03 OCT 2024