

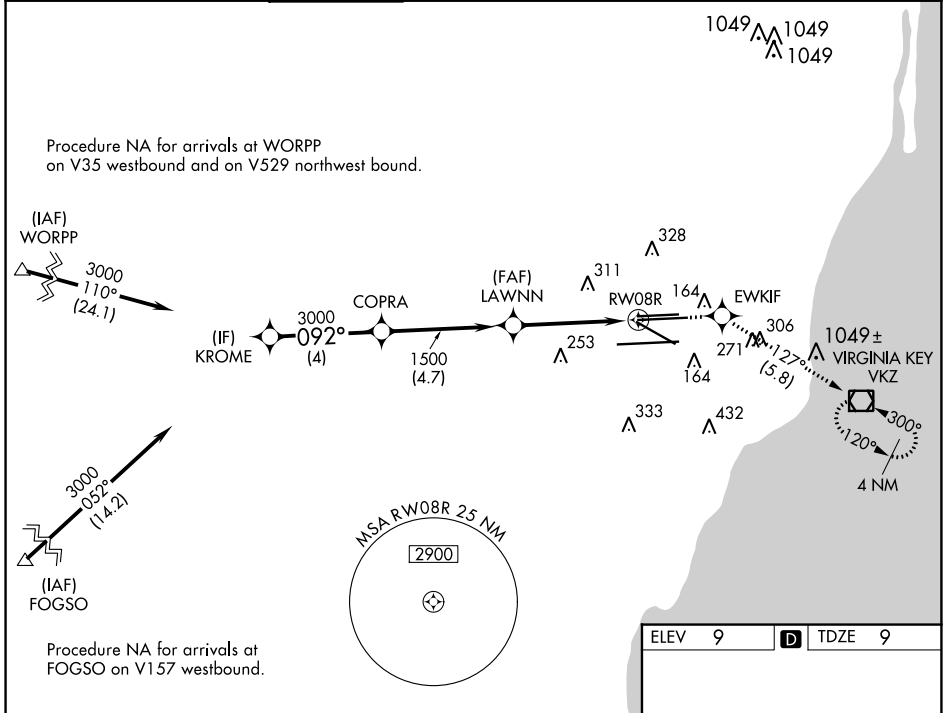
WAAS CH 97404 W08B	APP CRS 092°	Rwy Idg 10506 TDZE 9 Apt Elev 9
--	------------------------	--

RNAV (GPS) Z RWY 8R

MIAMI INTL (MIA)

RNP APCH-GPS. ▼ Rwy 8R helicopter visibility reduction below RVR 4000 NA. For uncompensated Baro-VNAV systems, LNAV/VNAV NA below 8°C or above 54°C. For inop ALS, increase LPV all Cats visibility to RVR 4500 and LNAV Cats A and B visibility to RVR 5500.	MALSR 	MISSED APPROACH: Climb to 3000 direct EWKIF and on track 127° to VKZ VOR/DME and hold, continue climb in-hold to 3000.
--	-----------	--

D-ATIS ARR 119.15 DEP 133.675	MIAMI APP CON 124.85 322.3	MIAMI TOWER 118.3 256.9	GND CON 121.8 (8L/8R/12/26L/26R) 127.5 (9/27/30)	348.6	CLNC DEL 135.35	CPDLC
---	--------------------------------------	-----------------------------------	--	--------------	---------------------------	-------



SE-3, 05 SEP 2024 to 03 OCT 2024

SE-3, 05 SEP 2024 to 03 OCT 2024

ELEV 9	D TDZE 9
--------	-----------------

VGSi and RNAV glidepath not coincident (VGSi Angle 3.00/TCH 77).			
KROME	COPRA	LAWNN	RW08R
3000	3000	1500	1.6 NM to RW08R
GP 3.00° TCH 51			
4 NM	4.7 NM	2.9 NM	1.6 NM
CATEGORY	A	B	C
LPV DA	277/40 268 (300-¾)		
LNAV/VNAV DA	531/55 522 (600-1)		
LNAV MDA	600/40 591 (600-¾)	600-1¼ 591 (600-1¼)	

