

LOC/DME I-MAF <b>110.3</b> Chan <b>40</b>	APP CRS <b>105°</b>	Rwy Idg TDZE Apt Elev	<b>8177</b> <b>2869</b> <b>2872</b>
---	------------------------	-----------------------------	---

# ILS or LOC RWY 10

MIDLAND INTL AIR AND SPACE PORT (MAF)

**⚠** Circling Rwy 16L NA at night. For inop ALS, increase S-ILS 10 Cat E visibility to RVR 4000, S-LOC 10 Cat E visibility to 1 1/4 SM. USILE fix minimums increase S-LOC 10 Cat E visibility to 1 1/8 SM. \*\* RVR 1800 authorized with use of FD or AP or HUD to DA.

**MALSR**  
MISSED APPROACH: Climb to 4900 on heading 105° and on MAF VORTAC R-117 to DERIC INT/MAF 19 DME and hold.

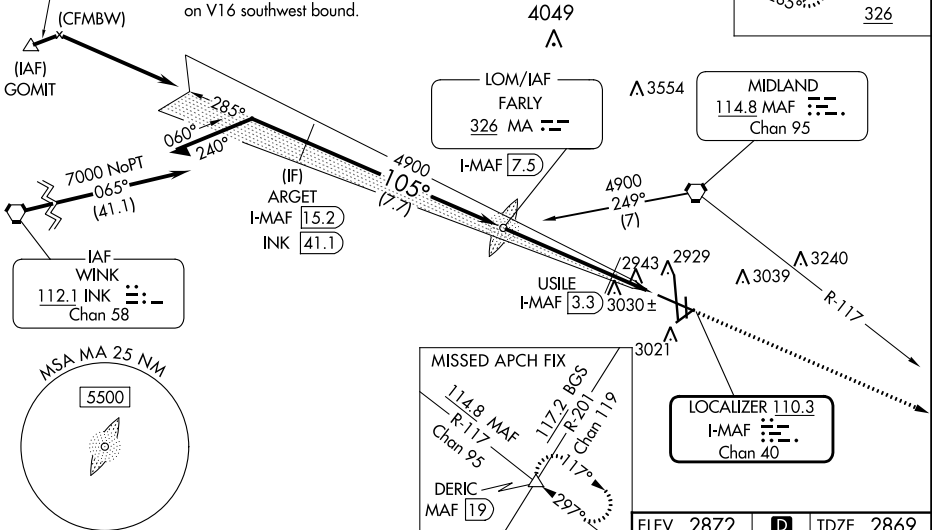
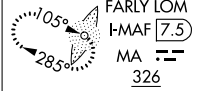
ATIS <b>126.8 235.975</b>	MIDLAND APP CON* <b>124.6 290.4</b>	MIDLAND TOWER* <b>118.7 (CTAF) 0 273.45</b>	GND CON <b>121.9 348.6</b>	CLNC DEL <b>118.05 317.65</b>	UNICOM <b>122.95</b>
------------------------------	--	--	-------------------------------	----------------------------------	-------------------------

## ADF OR DME REQUIRED

4900 NoPT to ARGET  
060° (1.1)  
and LOC (9.6)

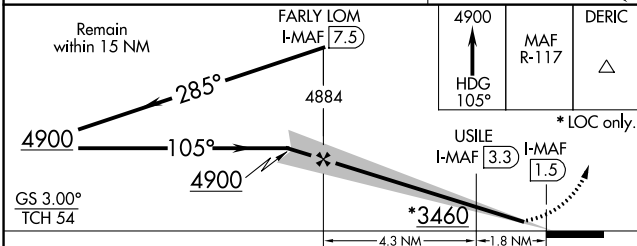
Procedure NA for arrivals at GOMIT on V16 southwest bound.

ALTERNATE MISSED APCH FIX

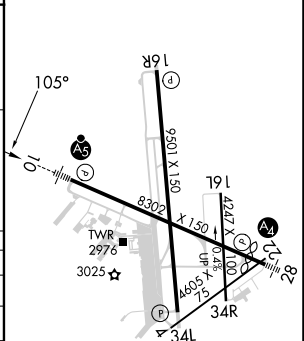


SC-3, 05 SEP 2024 to 03 OCT 2024

SC-3, 05 SEP 2024 to 03 OCT 2024



ELEV 2872	<b>D</b>	TDZE 2869
-----------	----------	-----------



CATEGORY	A	B	C	D	E
S-ILS 10 **	3069/24 200 (200-1/2)				
S-LOC 10	3460/24	591 (600-1/2)	3460-1 1/4	591 (600-1 1/4)	
CIRCLING	3460-1	588 (600-1)	3460-1 3/4 588 (600-1 3/4)	3520-2 648 (700-2)	3600-2 1/2 728 (800-2 1/2)
USILE FIX MINIMUMS					
S-LOC 10	3420/24	551 (600-1/2)	3420/60	551 (600-1 1/4)	
CIRCLING	3440-1	568 (600-1)	3440-1 1/8 568 (600-1 1/8)	3520-2 648 (700-2)	3600-2 1/2 728 (800-2 1/2)

REL Rwy 34L					
MIRL Rwys 4-22 and 16L-34R					
HIRL Rwys 10-28 and 16R-34L					
FAF to MAP 6.1 NM					
Knots	60	90	120	150	180
Min:Sec	6:06	4:04	3:03	2:26	2:02