

VOR/DME MLS <b>112.1</b> Chan <b>58</b>	APP CRS <b>217°</b>	Rwy Idg TDZE Apt Elev	<b>5764</b> <b>2630</b> <b>2634</b>
---	------------------------	-----------------------------	---

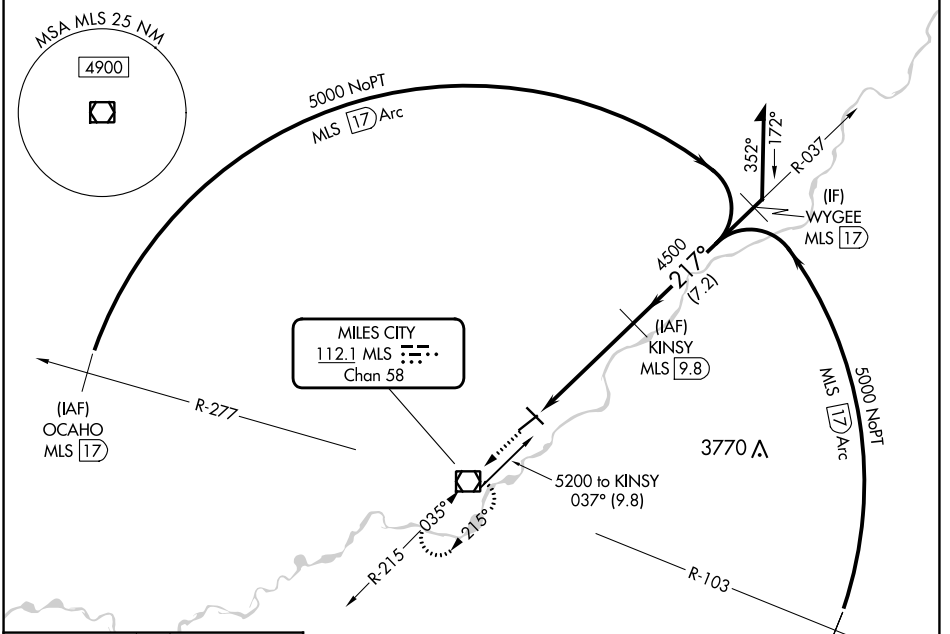
**VOR RWY 22**  
FRANK WILEY FLD (MLS)

DME required.

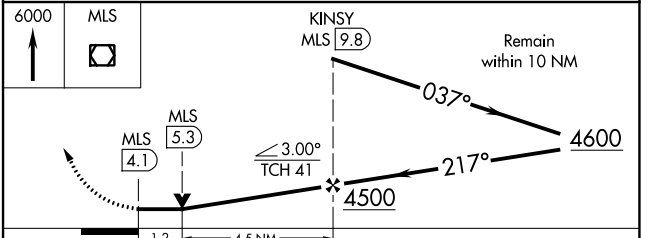
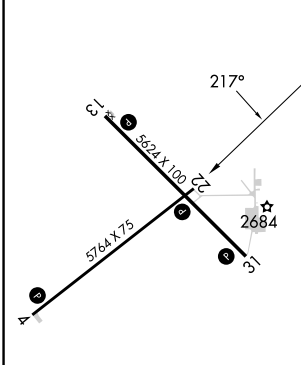
**MISSED APPROACH:** Climb to 6000 direct MLS VOR/DME and hold, continue climb-in-hold to 6000.

When local altimeter setting not received, use Glendive altimeter setting and increase all MDA 180 feet and all Cat C and D visibilities ½ SM.

ASOS <b>135.575</b>	SALT LAKE CENTER <b>126.85 305.2</b>	UNICOM <b>123.0 (CTAF) 0</b>
------------------------	---	---------------------------------



ELEV 2634 **D** TDZE 2630



CATEGORY	A	B	C	D
S-22	3060-1	430 (500-1)	3060-1½	430 (500-1½)
<b>CIRCLING</b>	3060-1 426 (500-1)	3100-1 466 (500-1)	3160-1½ 526 (600-1½)	3320-2½ 686 (700-2½)

NW-1, 05 SEP 2024 to 03 OCT 2024

NW-1, 05 SEP 2024 to 03 OCT 2024