

VORTAC MLF <b>112.1</b> Chan <b>58</b>	APP CRS <b>344°</b>	Rwy Idg TDZE Apt Elev <b>N/A</b> <b>N/A</b> <b>5042</b>
--	------------------------	--

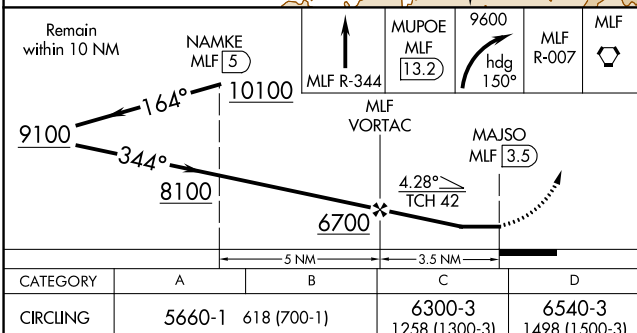
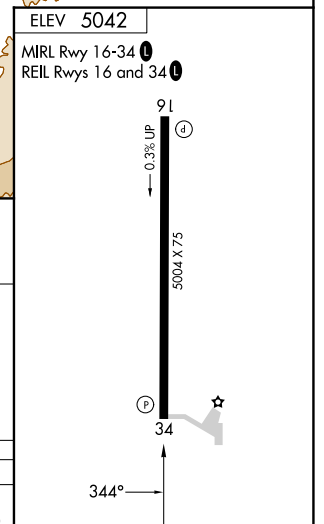
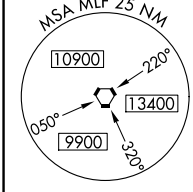
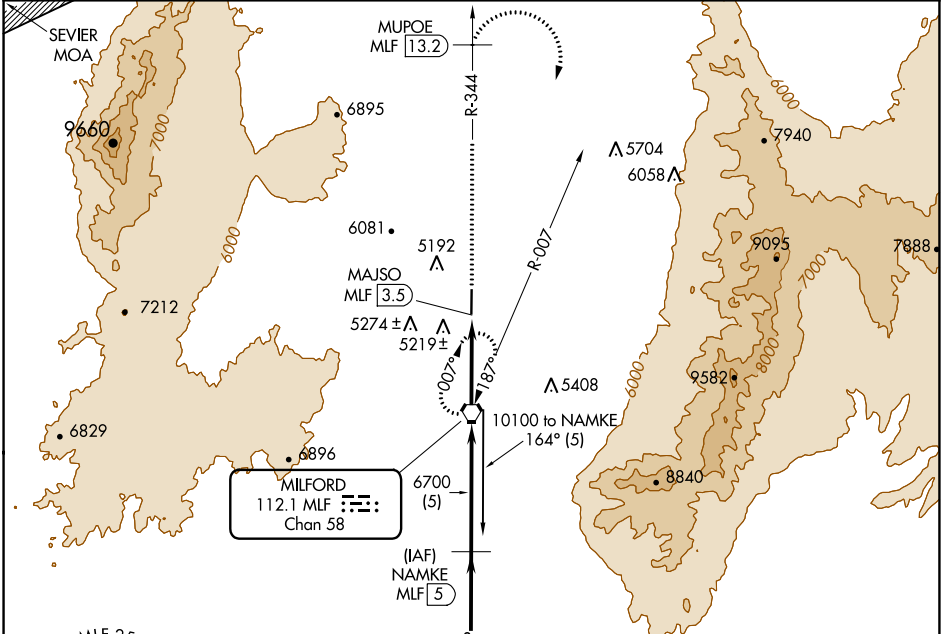
# VOR/DME-A

MILFORD MUNI/BEN AND JUDY BRISCOE FLD (MLF)

**⚠** When local altimeter setting not received, use Cedar City altimeter setting and increase all MDAs 180 feet, Circling Cat D NA. When VGSI inop, procedure NA at night. Visibility reduction by helicopters NA.

**MISSED APPROACH:** Climb on MLF VORTAC R-344 to MUPOE/MLF 13.2 DME then climbing right turn to 9600 on heading 150° and MLF VORTAC R-007 to MILFORD VORTAC and hold.

ASOS <b>135.025</b>	SALT LAKE CENTER <b>125.575 379.275</b>	UNICOM <b>122.8 (CTAF) 0</b>
------------------------	--	---------------------------------



CATEGORY	A	B	C	D
CIRCLING	5660-1	618 (700-1)	6300-3 1258 (1300-3)	6540-3 1498 (1500-3)

SW-4, 05 SEP 2024 to 03 OCT 2024

SW-4, 05 SEP 2024 to 03 OCT 2024